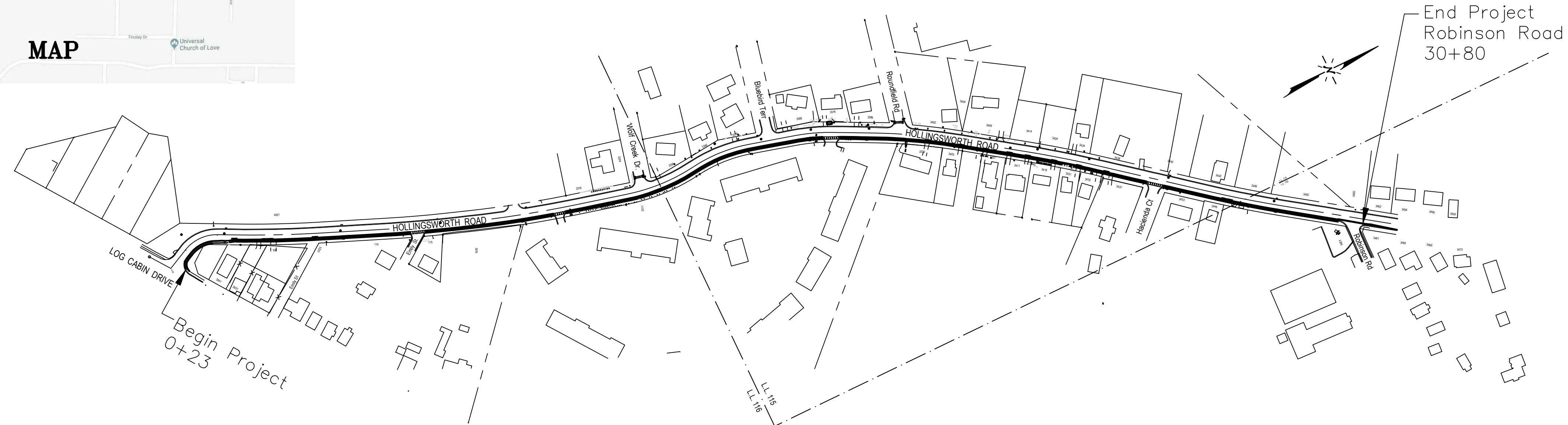
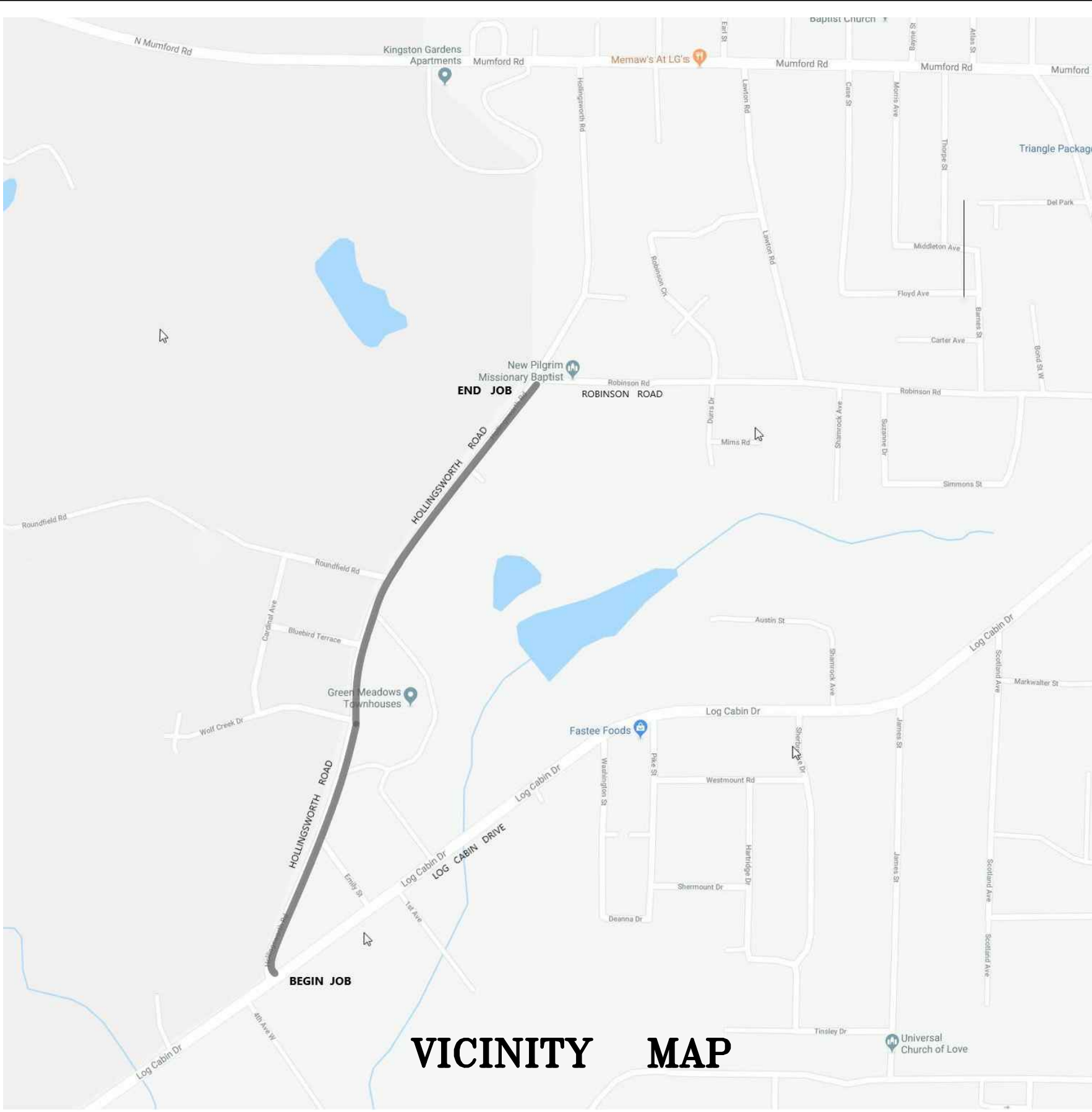


MACON-BIBB COUNTY ENGINEERING MACON-BIBB COUNTY, GEORGIA

HOLLINGSWORTH ROAD SIDEWALK IMPROVEMENTS

From Log Cabin Drive to Robinson Road
Length of Project: 3,000 feet



INDEX	
DRAWING NO.	DESCRIPTION
01-03	OMITED
04-0001	GENERAL NOTES - SUMMARY OF ESTIMATED QUANTITIES
05-0001 to 05-0006	TYPICAL SECTIONS AND DETAILS
13-0001 to 13-0003	CONSTRUCTION PLANS - PLAN VIEW

PROJECT INFORMATION	
NET LENGTH OF SIDEWALK	2865 ft
DRIVEWAYS	15 each
CURB INLETS	7 each
THERMO STRIPING CROSSINGS	5 each
ADA Ramp, Type D	10 each

**MACON-BIBB COUNTY
* BOARD OF COMMISSIONERS ***

- Lester Miller, Mayor
- Seth Clark
- Valerie Wynn
- Elaine Lucas
- Mallory Jones
- Paul Bronson
- Raymond Wilder
- Bill Howell
- Virgil Watkins
- Al Tillman

County Engineer, Charles Brooks



**Macon-Bibb County
Engineers Office**
 780 THIRD STREET (478) 621-6660
 MACON, GA 31201 (478) 621-6666



SPLOST PROJECT 2018
HOLLINGSWORTH ROAD SIDEWALK
 FROM LOG CABIN DR. TO ROBINSON RD.

REVISIONS	DESCRIPTION	DATE

DATE: August, 2023
 SCALE:
 DESIGNED: FCB2
 DRAWN: FCB2
 CHECKED:
 PROJ. NO.:
 DWG.: Hollingsworth Rd Sidewalk2.dwg
 Title: COVER
 Sheet:

NOTES

1. PRIOR TO STARTING CONSTRUCTION THE GENERAL CONTRACTOR SHALL BE RESPONSIBLE TO VERIFY THAT ALL REQUIRED PERMITS AND APPROVALS HAVE BEEN OBTAINED. NO CONSTRUCTION OR FABRICATION OF ANY ITEM SHALL BEGIN UNTIL THE CONTRACTOR HAS RECEIVED ALL PLANS AND ANY OTHER DOCUMENTATION FROM ALL OF THE PERMITTING AND OTHER AUTHORITIES. FAILURE OF THE CONTRACTOR TO FOLLOW THIS PROCEDURE SHALL CAUSE THE CONTRACTOR TO ASSUME FULL RESPONSIBILITY FOR ANY SUBSEQUENT MODIFICATION OF THE WORK MANDATED BY ANY REGULATORY AUTHORITY.
2. AN N.O.I. IS NOT REQUIRED FOR THIS PROJECT. THE TOTAL DISTURBED AREA FOR THIS PROJECT IS 0.42 ACRE.
3. CONTRACTOR TO VERIFY ALL UNDERGROUND UTILITIES WITH THE UTILITIES PROTECTION CENTER 2 1-800-282-7411 PRIOR TO CONSTRUCTION.
4. CONTRACTOR SHALL FURNISH AND MAINTAIN ALL NECESSARY BARRICADES AROUND WORK SITE AND PROVIDE PROTECTION AGAINST WATER DAMAGE AND SOIL EROSION.
5. CONTRACTOR SHALL SUPPLY 2 PORTABLE CHANGEABLE MESSAGE SIGNS DURING CONSTRUCTION.
6. CONCRETE - 5" CLASS "A" CONCRETE. Control (contraction) joints shall consist of a slot or groove, at least 1 inch (1") in depth and one-fourth inch (1/4") in width and placed at a 5 foot spacing along sidewalk. Place expansion joints to separate fixed or different concrete structures where needed.
7. THERE IS NO SUITABLE PLACE TO BURY EXISTING CONSTRUCTION DEBRIS WITHIN THE PROJECT'S LIMITS. THE CONTRACTOR SHALL PROVIDE AN ENVIRONMENTALLY APPROVED SITE TO DISPOSE OF EXISTING CONSTRUCTION DEBRIS AT NO ADDITIONAL COST TO MACON-BIBB COUNTY GOVERNMENT
8. AT LOCATIONS WHERE NEW PAVEMENT/SIDEWALK IS TO BE PLACED ADJACENT TO EXISTING PAVEMENT WITHOUT AN OVERLAY, A JOINT SHALL BE SAWed ON A LINE ESTABLISHED BY THE EDGE OF THE PROPOSED SIDEWALK OR BY THE ENGINEER TO ENSURE PAVEMENT REMOVAL TO A NEAT LINE.
9. REPLACE EARTH, GRAVEL, ASPHALT, AND CONCRETE DRIVEWAYS WITH CONCRETE.

DRIVEWAY REPLACEMENT SHALL BE CONSTRUCTED WITH 6" GRADED AGGREGATE BASE COURSE
6" CLASS "A" CONCRETE
10. WHERE APPURTENANCES ARE ALONG THE CONSTRUCTION AREA, SUCH AS MAILBOXES, THEY ARE TO BE REMOVED AND RE-INSTALLED NEAR THE BACK OF THE PROPOSED SIDEWALK IN A REASONABLE FASHION AS PREVIOUSLY OBSERVED.
11. MEASUREMENTS ARE REFERENCED TO THE BACK OF THE ROLL-OVER CURB ON THE EAST SIDE OF HOLLINGSWORTH ROAD.
12. ALL WORK TO BE DONE IN ACCORDANCE WITH THESE PLANS AND THE EXECUTED CONTRACT DOCUMENTS (UNLESS OTHERWISE NOTED).

Hollingsworth Drive Sidewalk Estimated Quantities

Sidewalk from Log Cabin to Robinson Road			
	Net Length of Sidewalk =	2865	ft
	Driveways	15	ea
	Curb Inlets	7	ea
	Thermo Striping Crossings	5	ea
	ADA Ramp, Type D	10	ea
Item No	Description	Quantity	Unit
150-1000	Traffic Control	1	LS
	Remove and replace brick wall	0	LF
	Remove and replace landscaping	330	LF
	Remove and replace fence	0	LF
171-0030	Silt Fence, Type C Install and Maint.	708	LF
201-1500	Clearing and Grubbing	1	LS
210-0100	Earthwork, Misc.	272	CY
	Concrete Removal (curb&gutter)	2682	LF
310-5100	GAB - 6", Incl Matl, for Driveways	33	TN
	GAB for curb&gutter removal void	171	TN
441-0104	5' Concrete Sidewalk, 5 in Thk	1572	SY
441-7014	Curb Cut Wheelchair Ramp, Type D	10	EA
668-4300	Storm Sewer Catch Basin Retrofit	7	EA
653-1804	Crosswalk Lnth Thermoplastic White	203	LF
700-6910	Grassing	1	LS
	Remove & Replace Dbl Yel CL Striping	3100	FT

DATE	REVISION



GENERAL NOTES
for
Hollingsworth Road Sidewalk Improvements

Land Lots 115, 116 & 152
Macon-Bibb County

4th Land District
Georgia

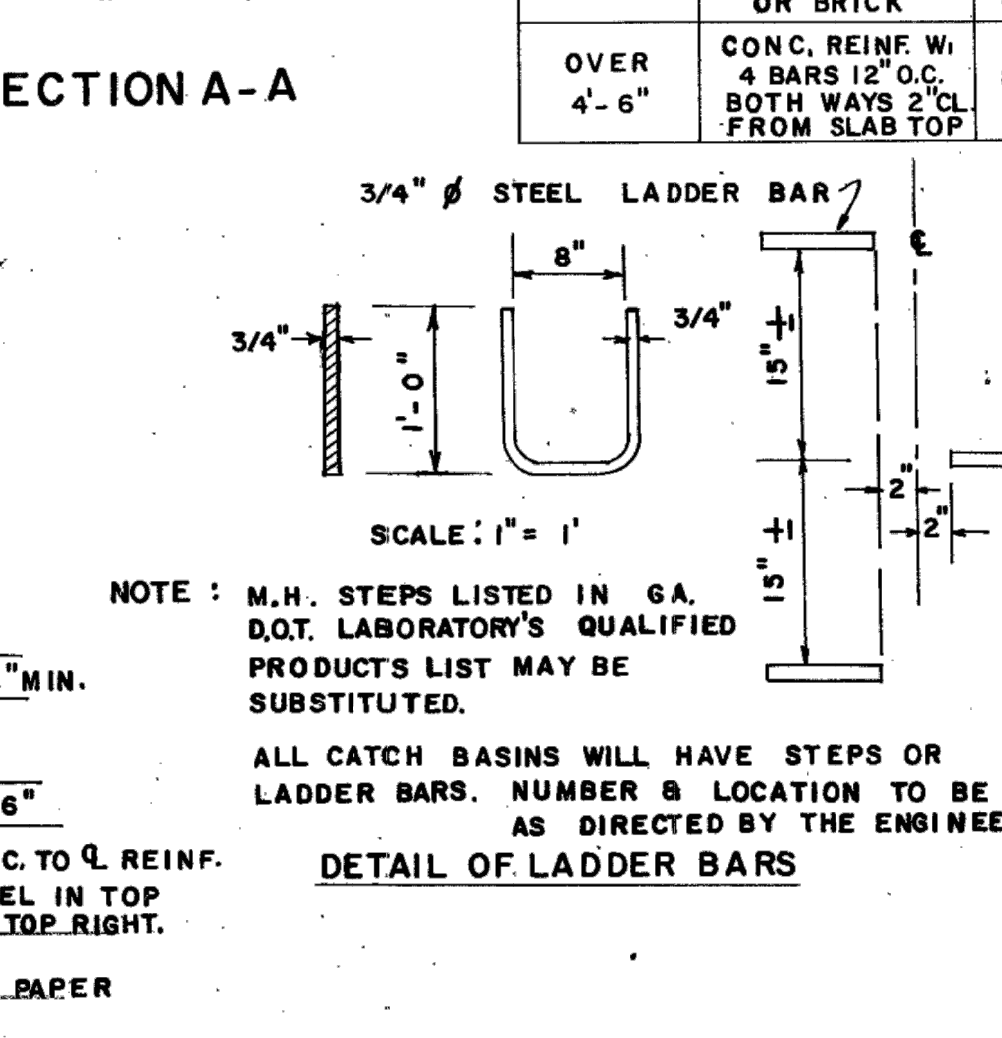
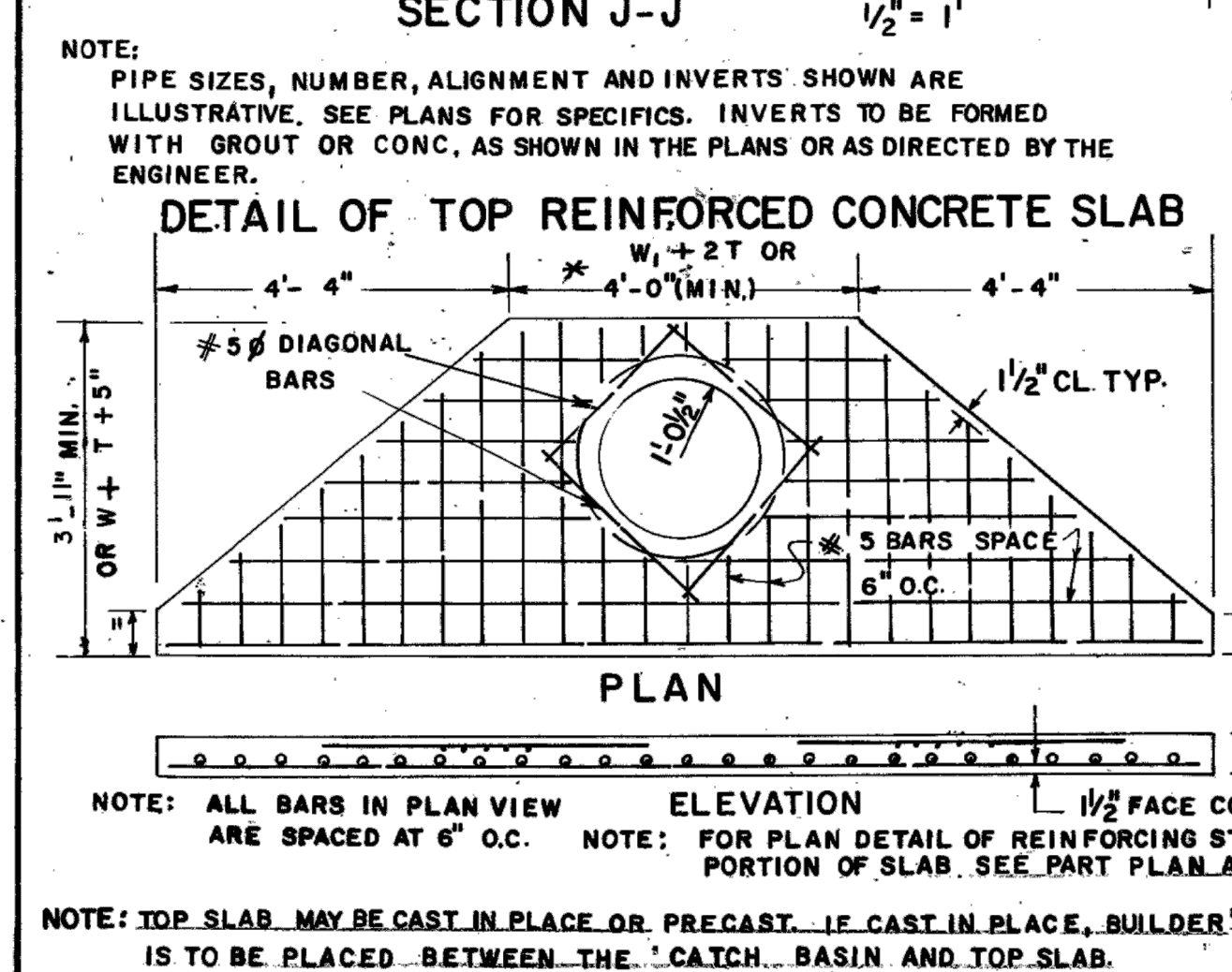
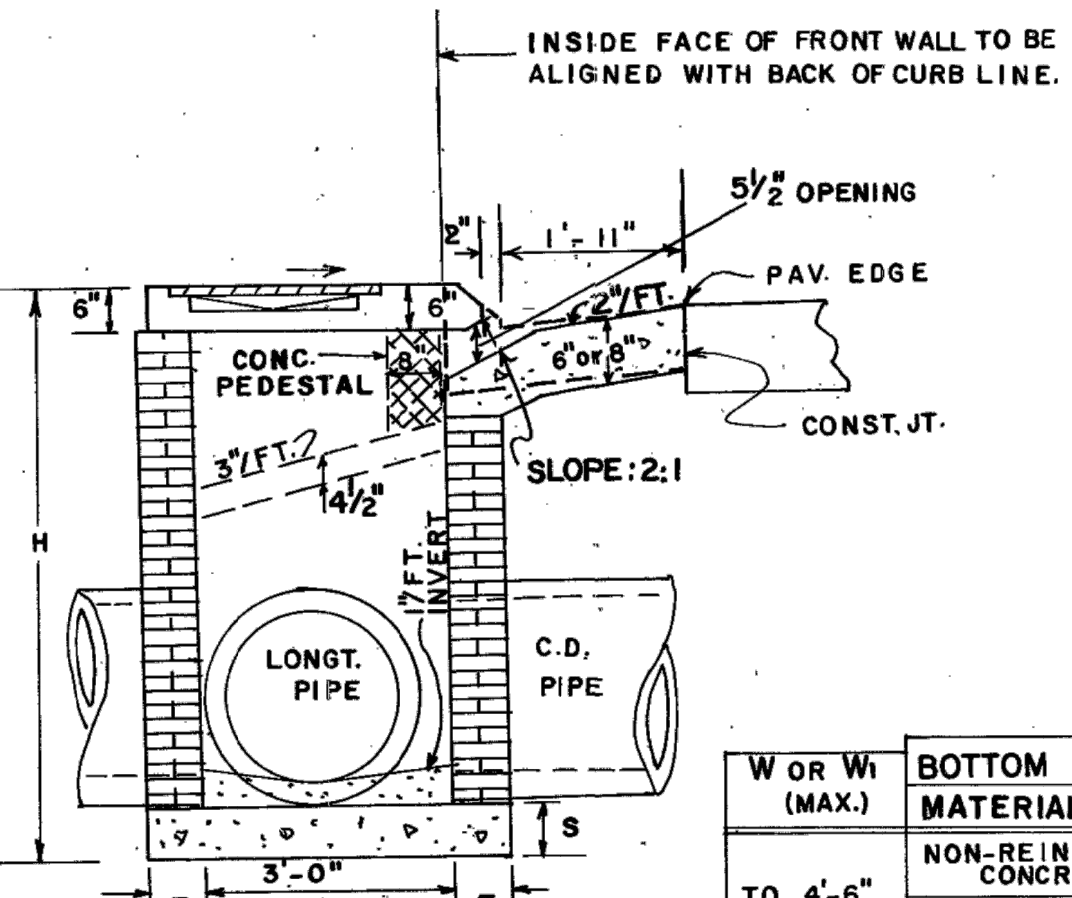
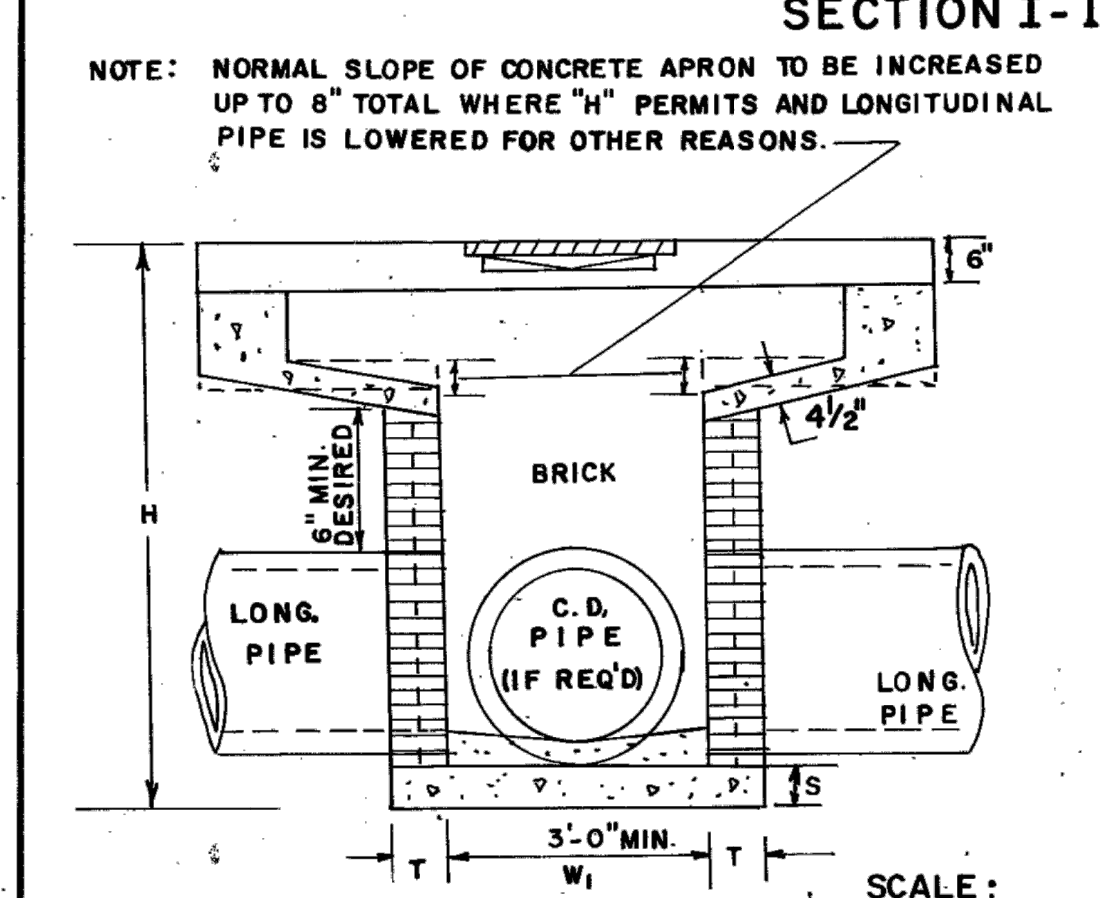
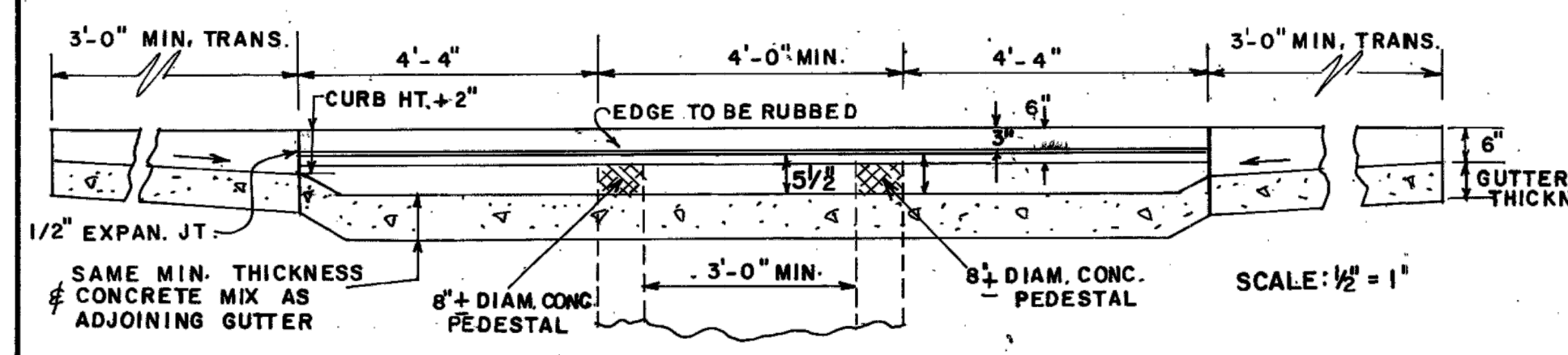
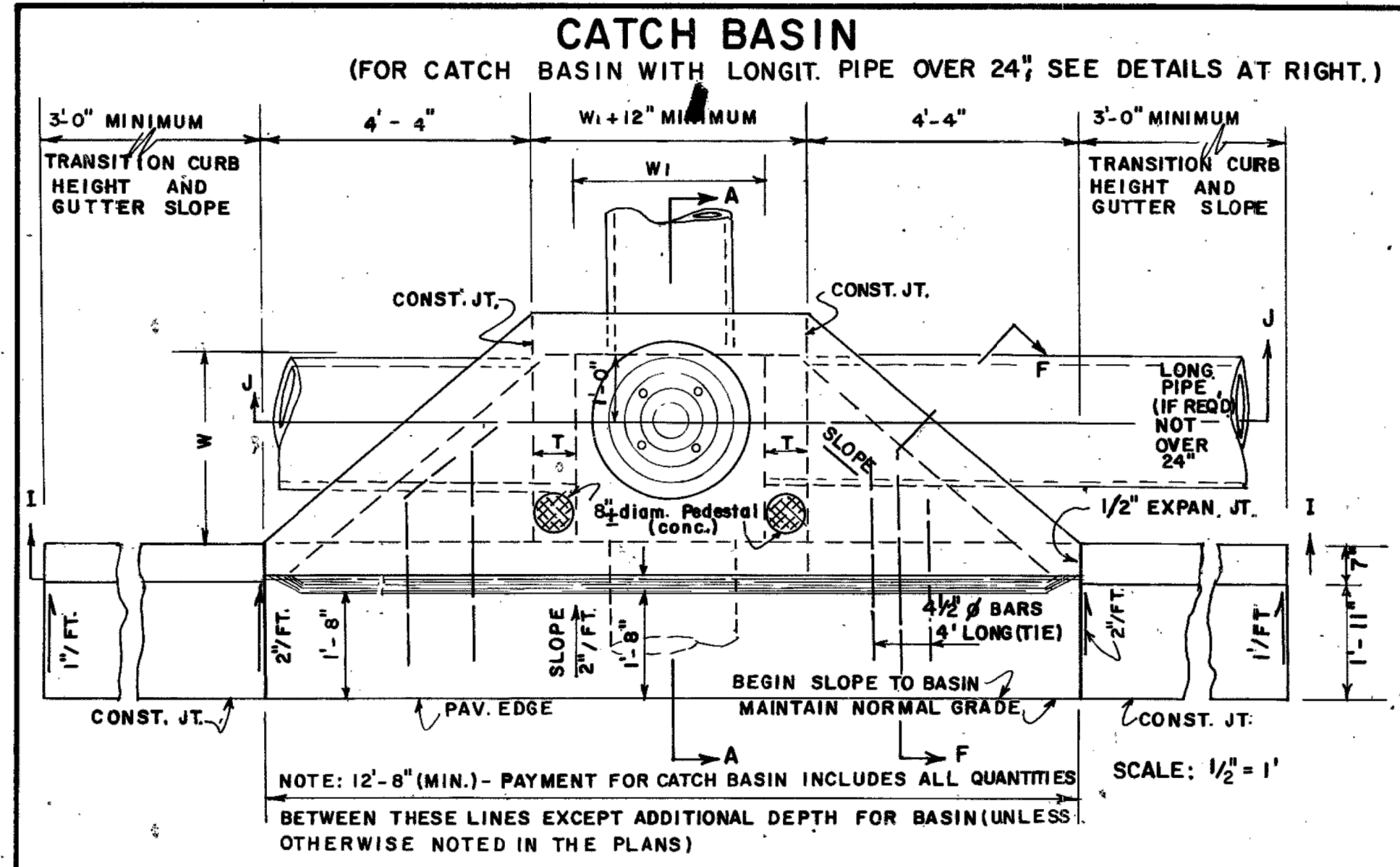
SCALE: 1" = 40'
DATE: Aug. 2023

DRAWN BY: FCB
PAGE: 04-0001

Macon-Bibb County Engineer's Office

DRAWING NO.: Hollingsworth Rd Sidewalk2.dwg

STATE	PROJECT NUMBER	SHEET NO.	TOTAL SHEETS
GA.			

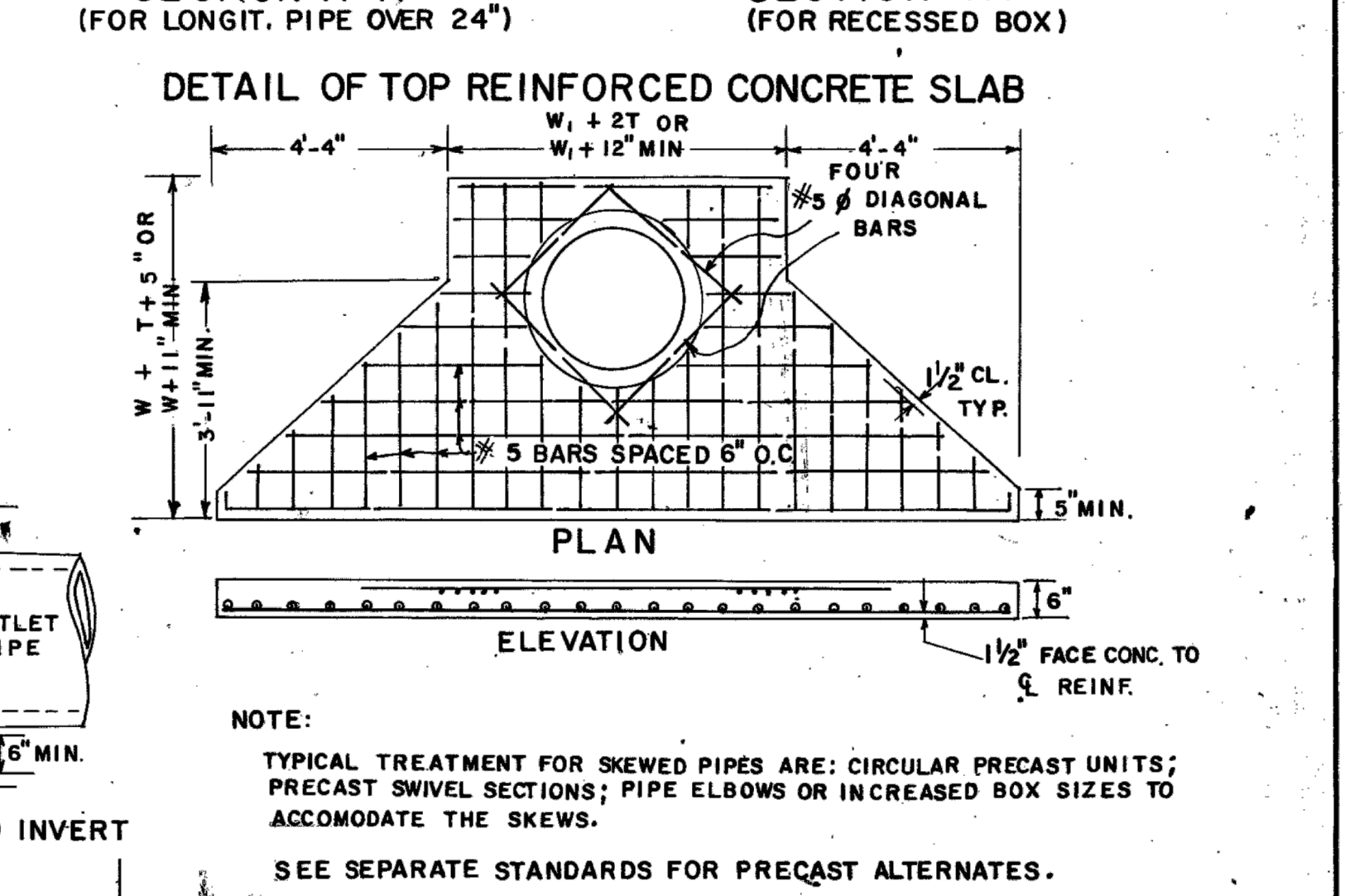
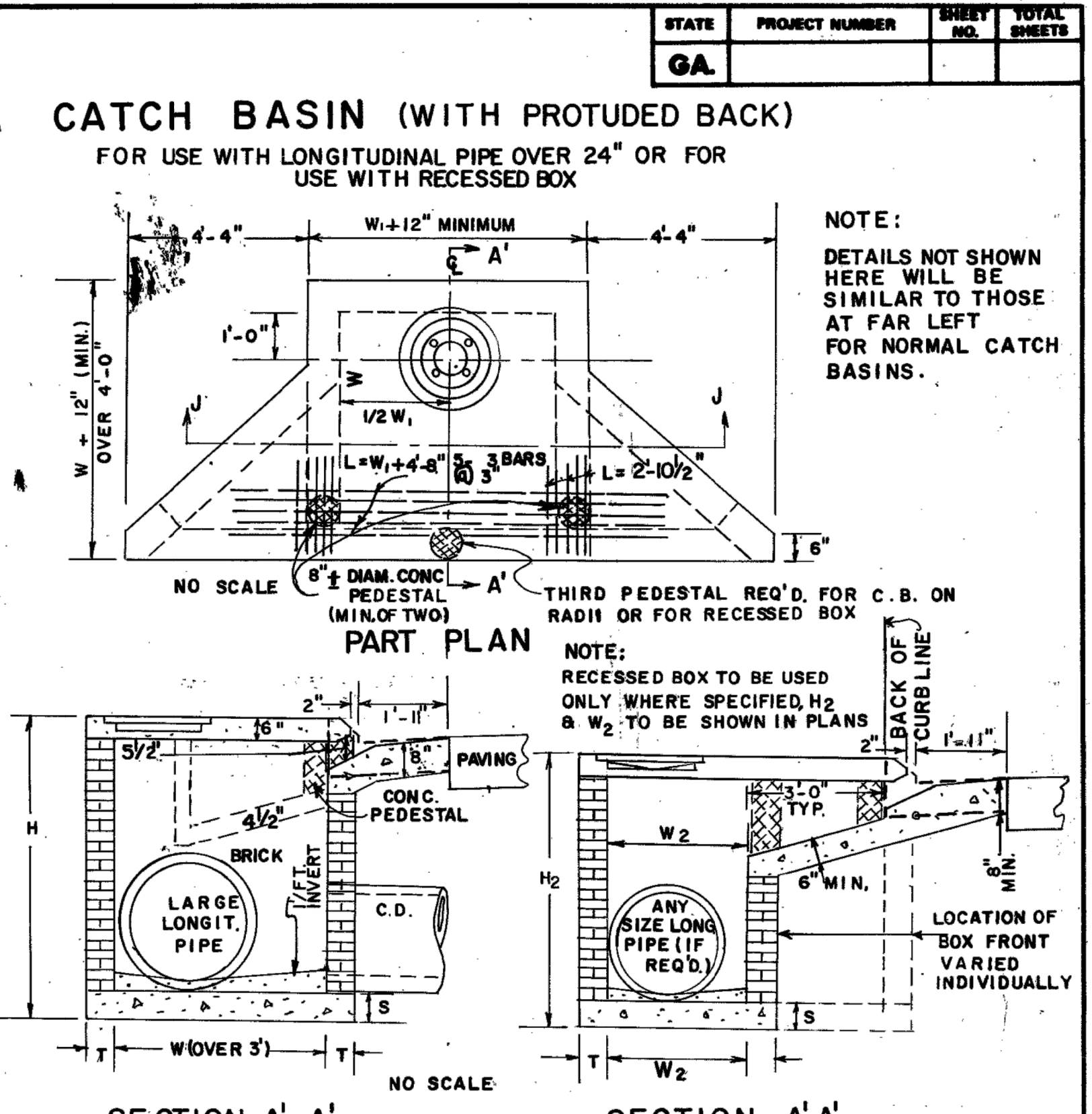
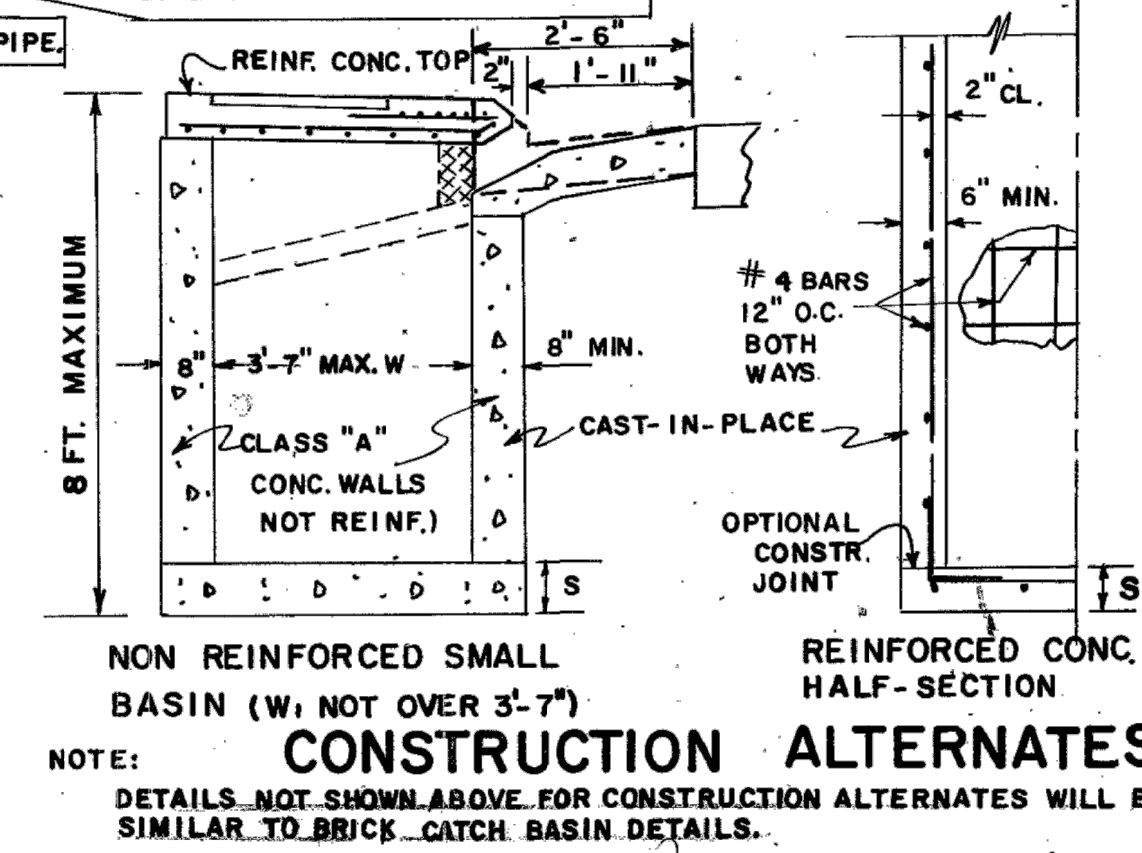
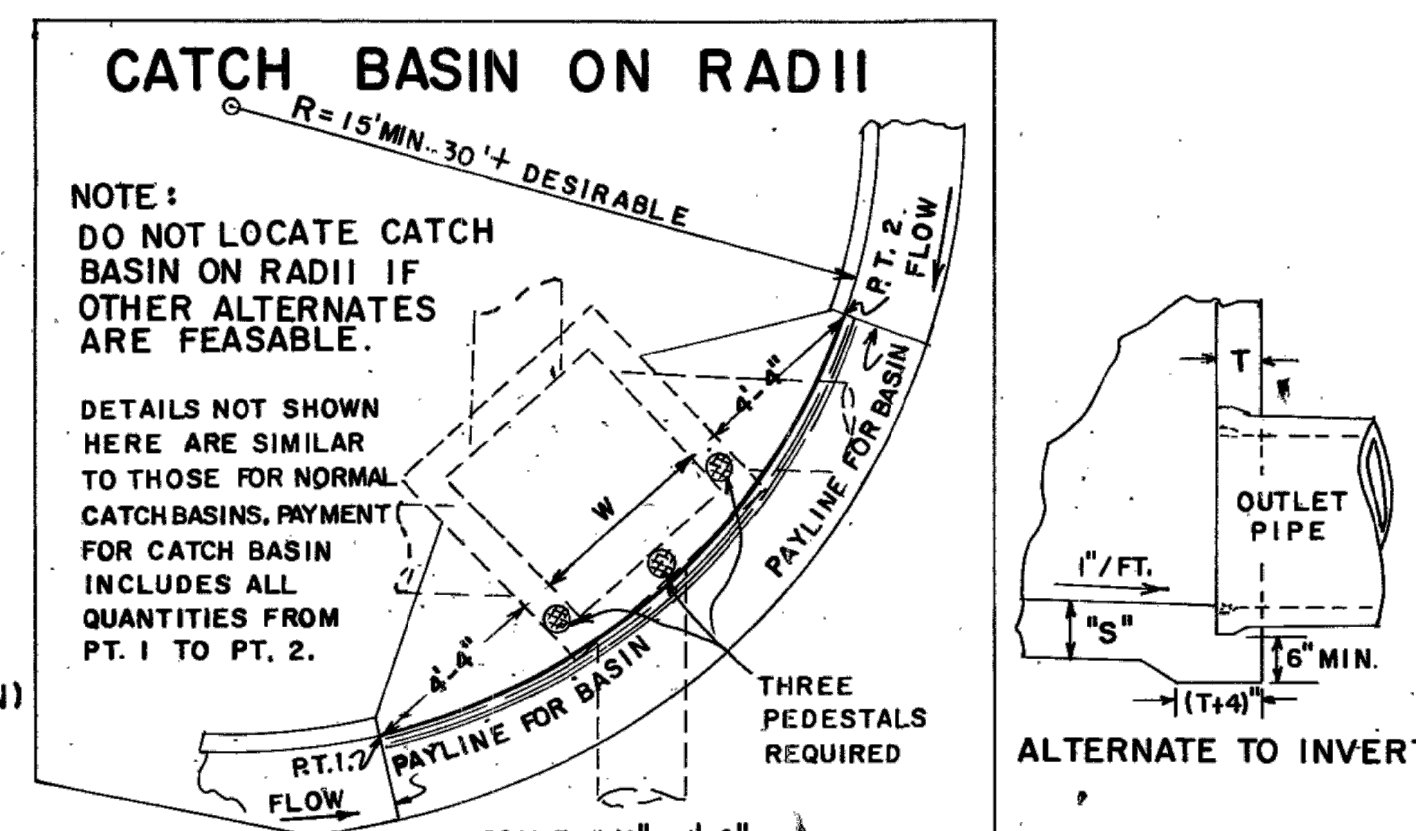
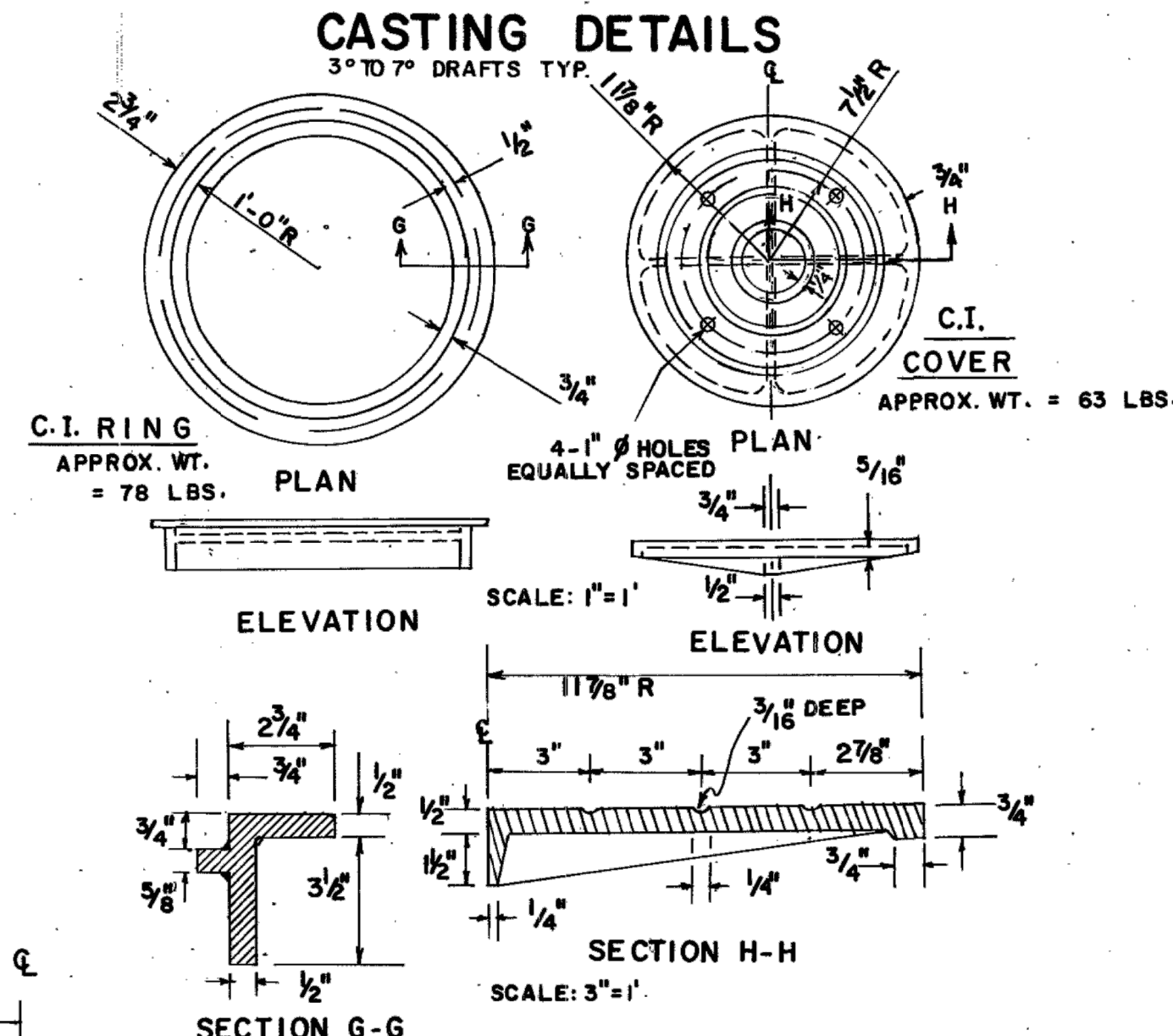
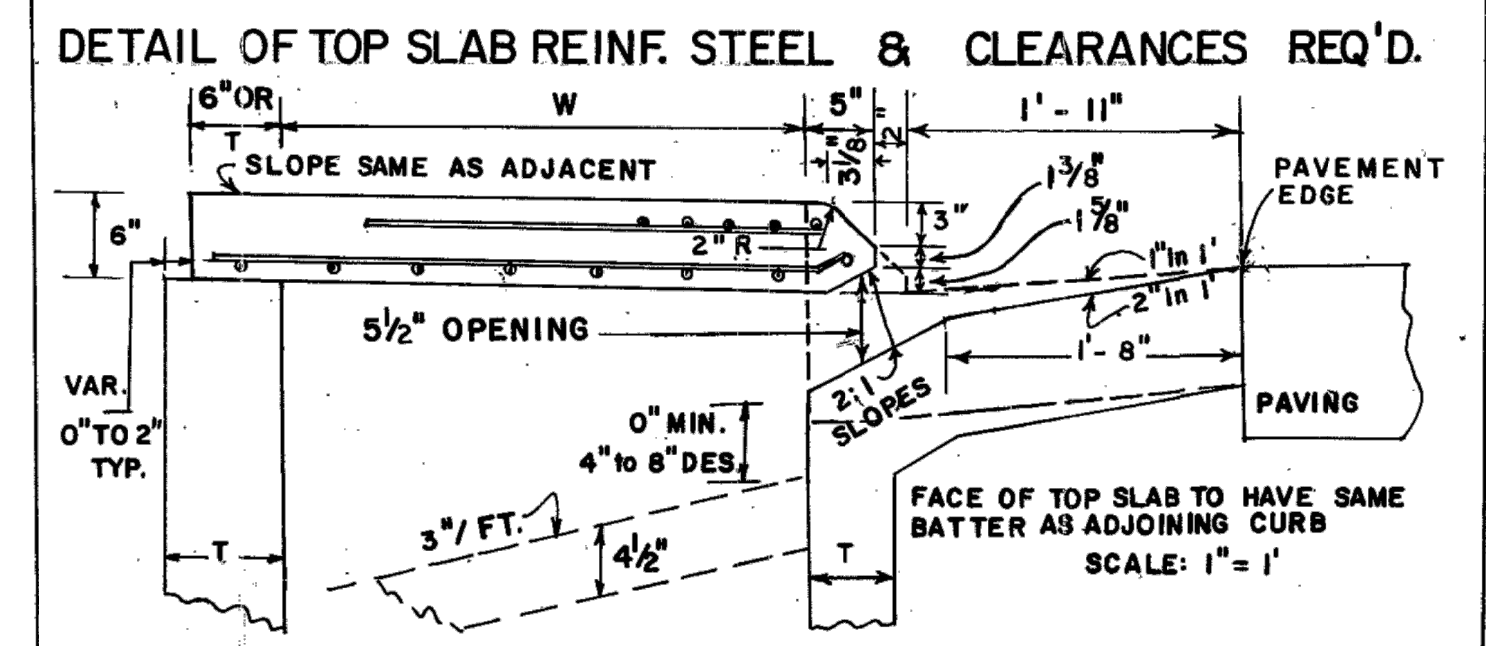


W OR W1 (MAX.)	BOTTOM SLAB MATERIALS	"S"
TO 4'-6"	NON-REINF. CONCRETE	6"
	OR BRICK	8"
OVER 4'-6"	CONC. REINF. W/ 4 BARS 12" O.C. BOTH WAYS 2" CL. FROM SLAB TOP	8"

TYPICAL MIN. DIMENSIONS

PIPE DIA.	H (MIN.)	W OR W1	MIN. ΔE
12	4'-4"	3'-0"	3'-3"
15	4'-7"	3'-0"	3'-6"
18	4'-10"	3'-0"	3'-9"
24	5'-6"	3'-0"	4'-4"
30	6'-2"	3'-7"	5'-0"
36	6'-10"	4'-6"	5'-7"
42	7'-4"	5'-3"	5'-11"
48	8'-0"	6'-0"	6'-6"
54	8'-6"	6'-8"	7'-0"
60	9'-2"	7'-4"	7'-7"

NOTE: THE MIN. H & MIN. ΔE GIVEN IN ABOVE TABLE ARE BASED UPON TYPICAL OUTSIDE DIAMETERS OF CONC. PIPE AND MAY BE VARIED, IF CONDITIONS PERMIT WITH VARIED DIMENSIONS SPECIFIED IN THE PLANS OR DIRECTED BY THE ENGINEER. W & W1 DIMENSIONS DO NOT HAVE TO BE EQUAL.



DEPARTMENT OF TRANSPORTATION
STATE OF GEORGIA

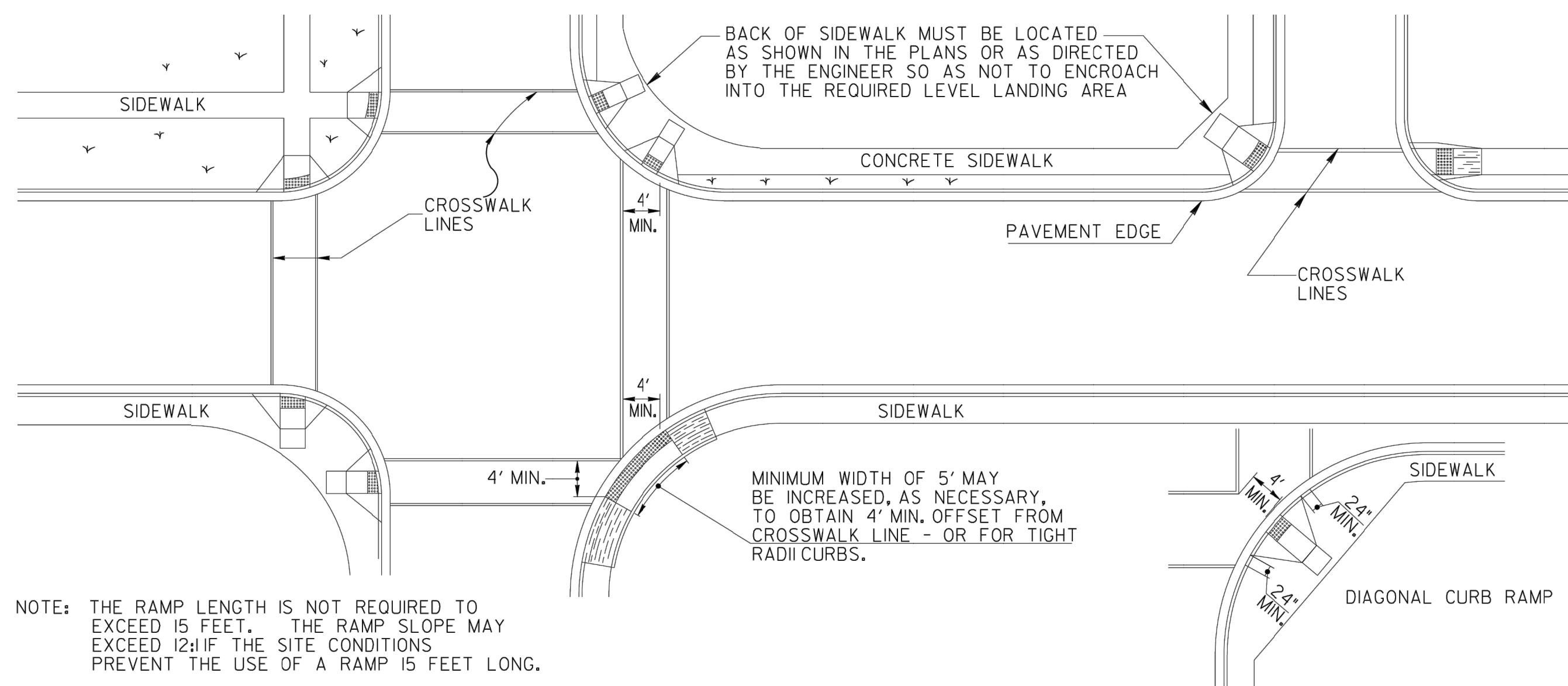
STANDARD
CATCH BASINS
FOR USE WITH CURB (6" Mountable) & GUTTER
(IN SAGS OR LOW POINTS)

SCALE AS SHOWN DEC. 1985

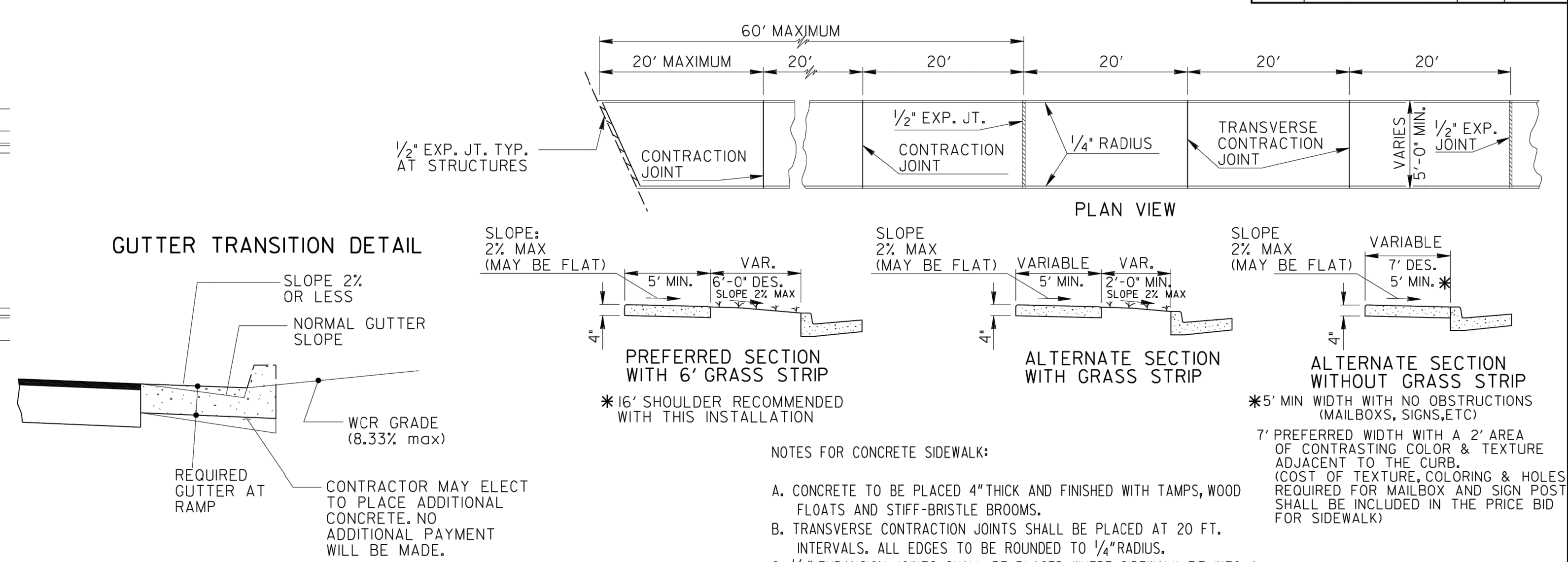
DES. RMU (SUBMITTED) *Floyd E. Hardy*
 DRW. RMU STATE ROAD & AIRPORT DESIGN ENGR.
 TRA. S.M.E. (APPROVED) *Hal Keweenaw*
 CHK. R.K.C. STATE HIGHWAY ENGINEER

NUMBER
1034 G

TYPICAL LOCATIONS FOR CURB CUT RAMPS - PLAN VIEW

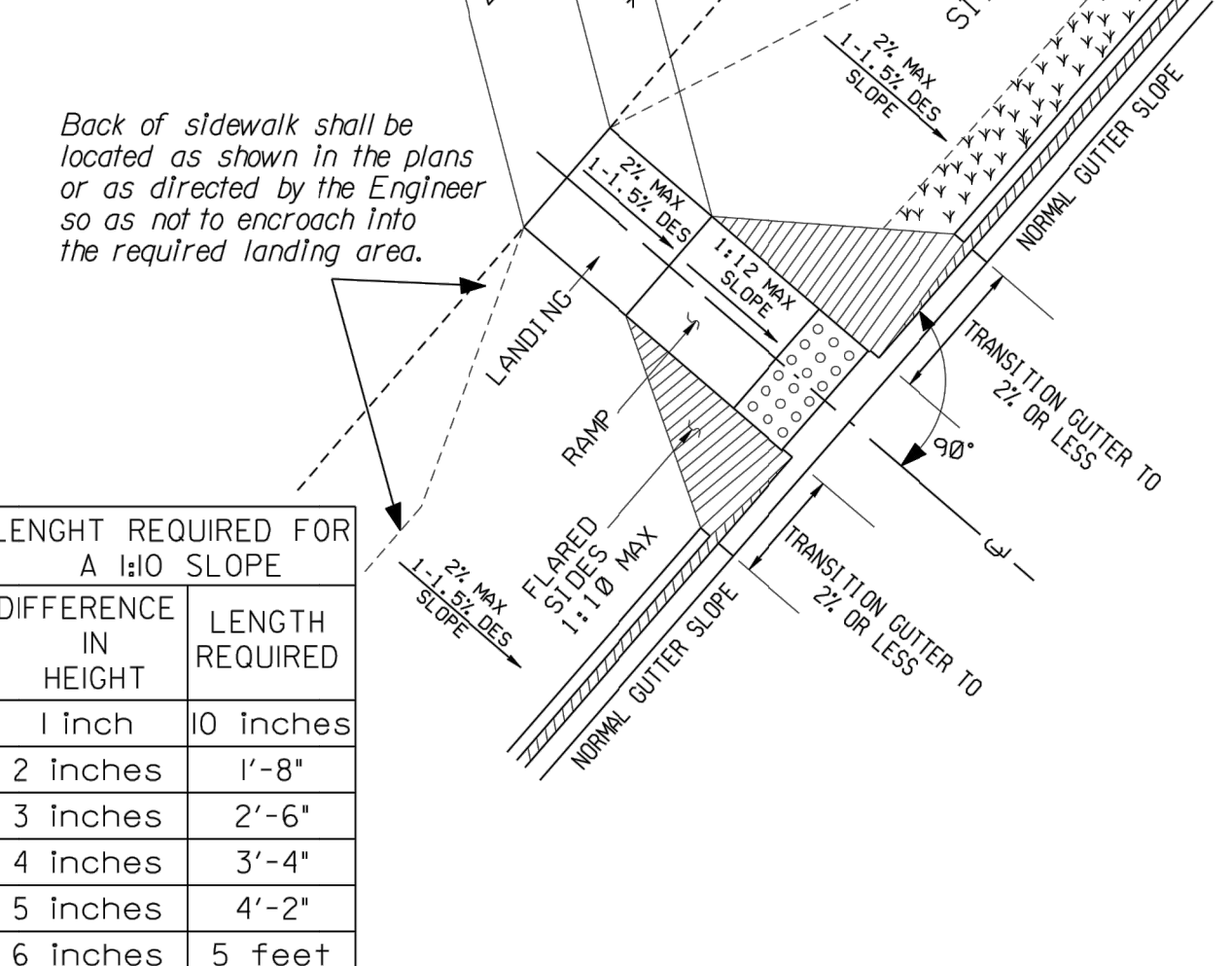


CONCRETE SIDEWALK DETAILS



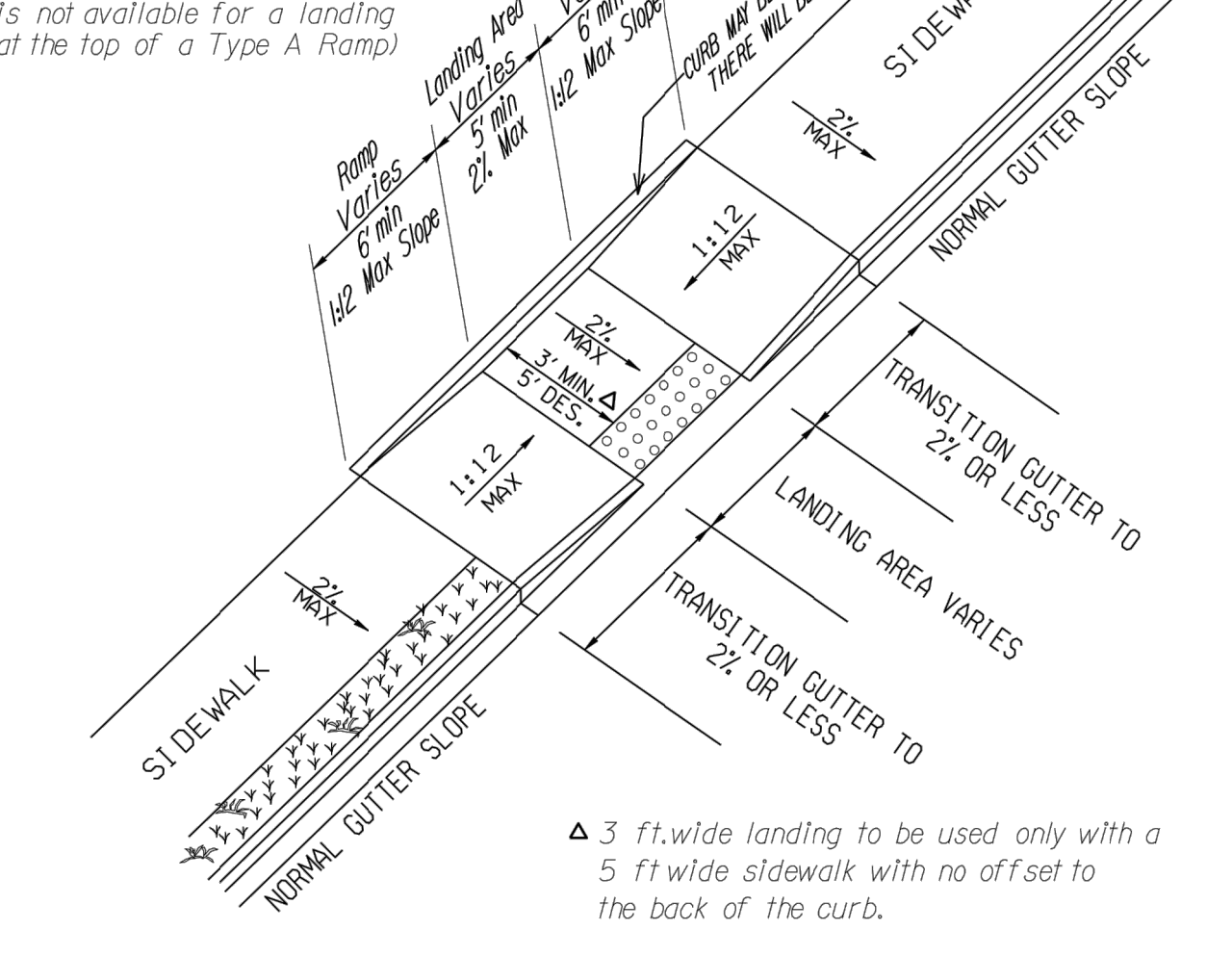
Type A

(Perpendicular)
(The Preferred Ramp)



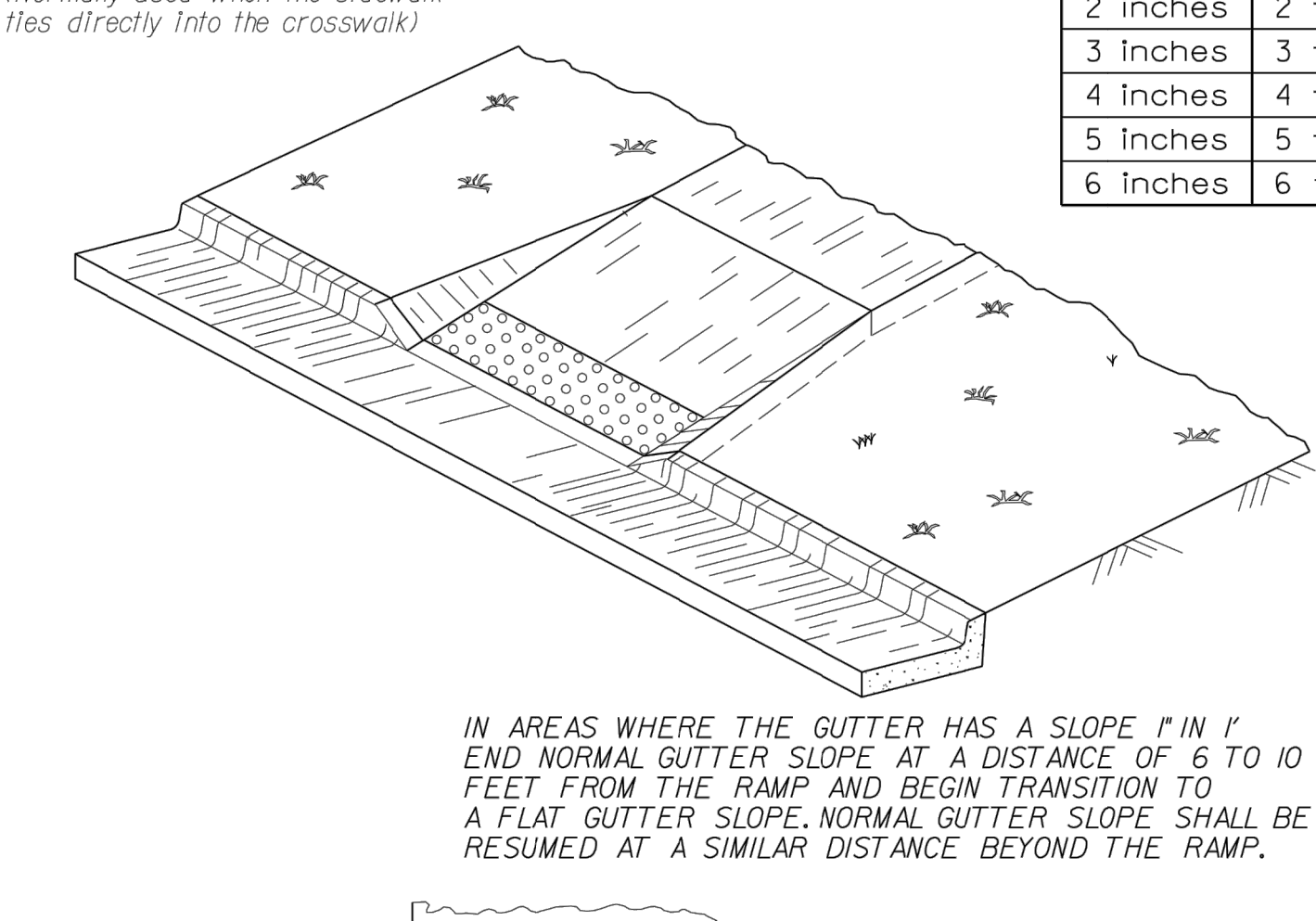
Type B

(Parallel)
(Normally used when space is not available for a landing at the top of a Type A Ramp)



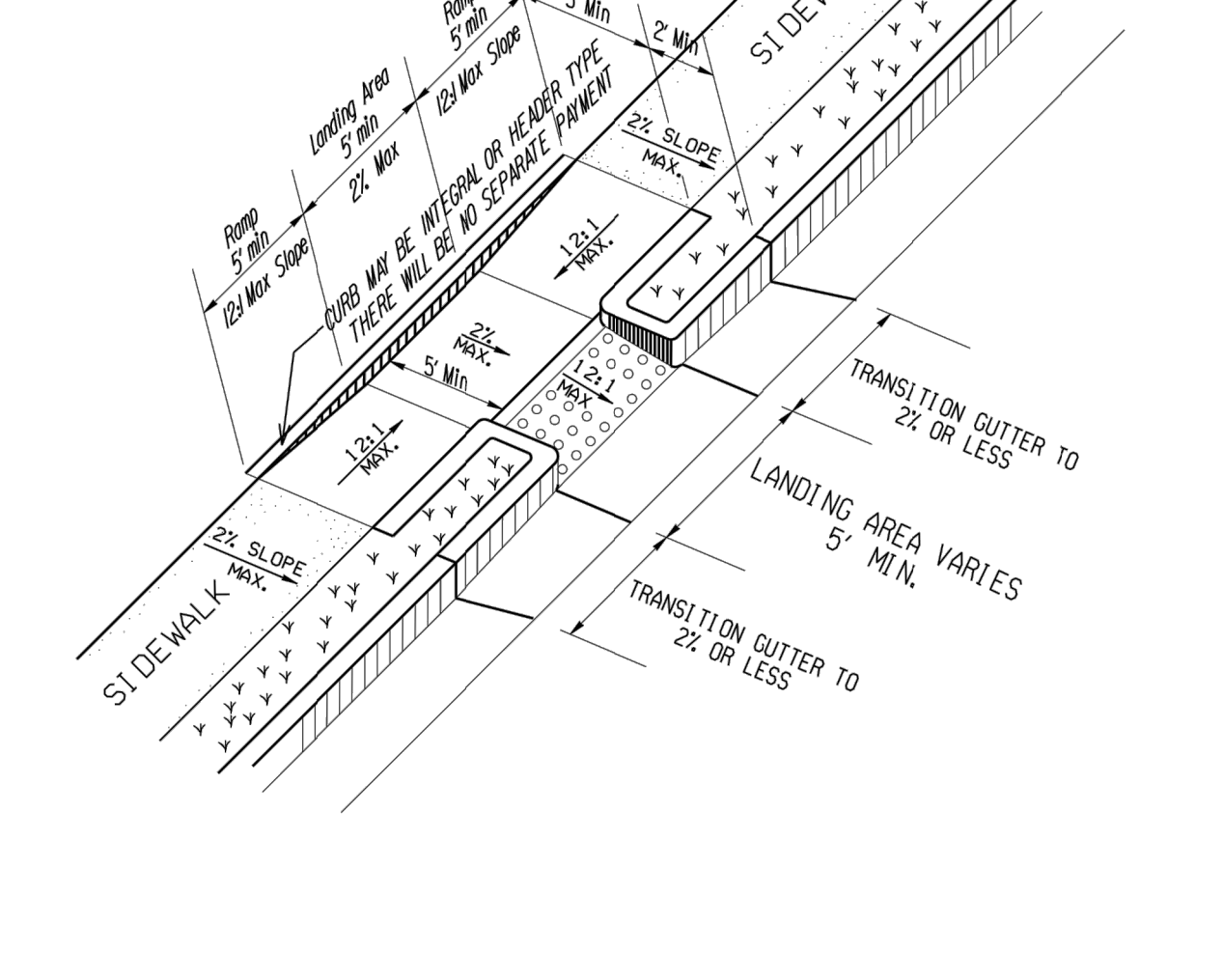
Type D

(Perpendicular)
(Normally used when the sidewalk ties directly into the crosswalk)



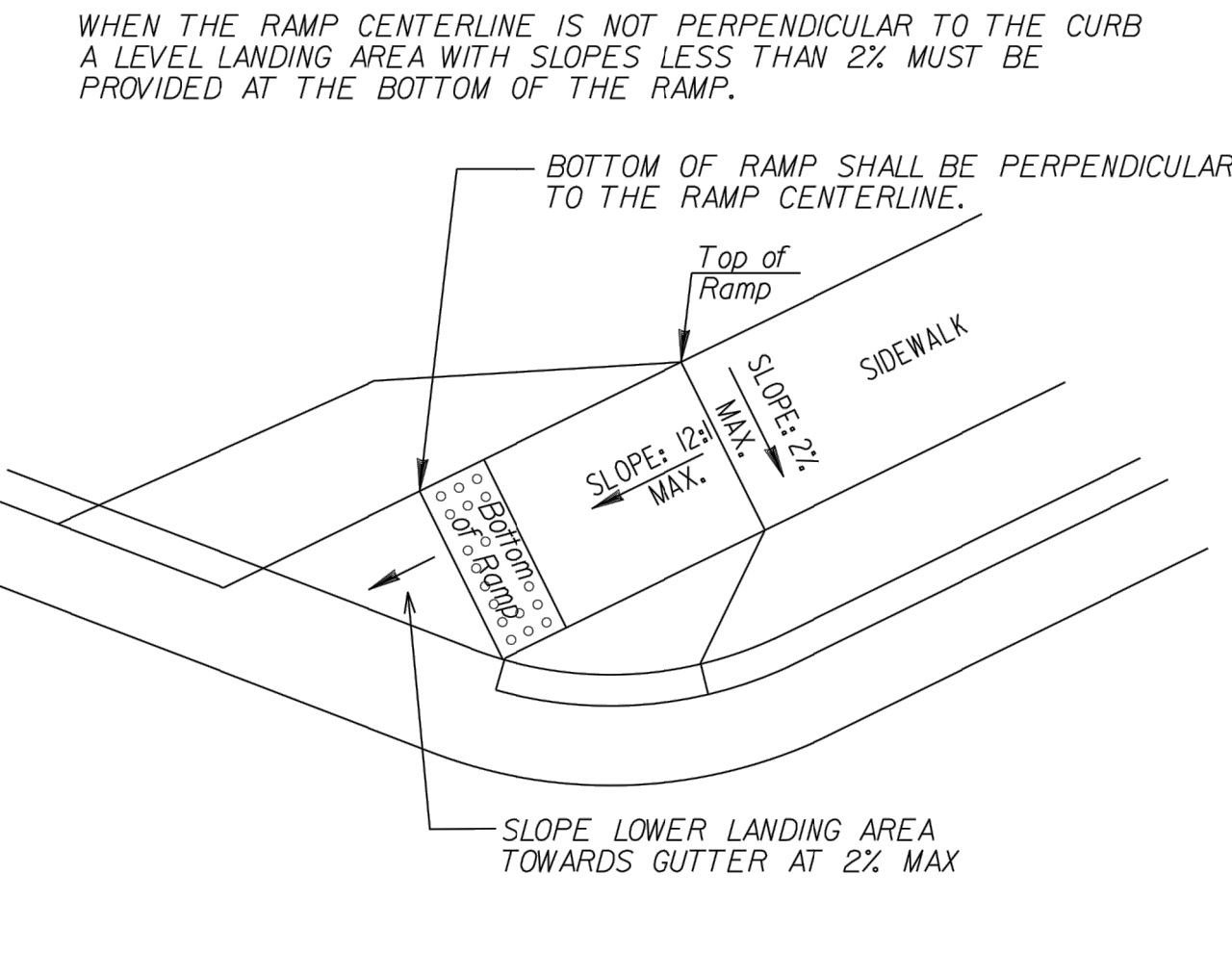
Type C

(Parallel)



Skewed Ramp Details

(Applies to Type A Type D Ramps Only)



DIFFERENCE IN HEIGHT	LENGTH REQUIRED
1 inch	1 foot
2 inches	2 feet
3 inches	3 feet
4 inches	4 feet
5 inches	5 feet
6 inches	6 feet

This Detail Replaces Ga Standard 9031W

Guidelines For Usage On Metric Projects

When these details are incorporated into plans and or projects that are being prepared or constructed in metric units, exact or precise conversion to metric units is not required. The dimensions shown that are in feet and inches may be converted to corresponding metric units using the following "Rounded-Off" conversion factors: 1" = 25mm, 4" = 100mm, and 12" = 300mm. All measurement notes that refer to linear feet and square yards shall be interpreted to mean linear meters and square meters.

DEPARTMENT OF TRANSPORTATION STATE OF GEORGIA		DATE
9-15-16	REVISED	2-21-03
6-18-09	REVISED	2-10-03
AND ADDED PERCENT AND ADDED I24 & I01 CHART	REVISED	7-29-02
AND GEN. NOTE NO. 8.	REVISED	5-29-02
REV. TRUNCATED DOMES	REVISED	5-29-02
	REVISED	5-19-02
	REVISED	4-29-02
	REVISED	4-1-02
	REVISED	4-3-02
	REVISED	3-28-02

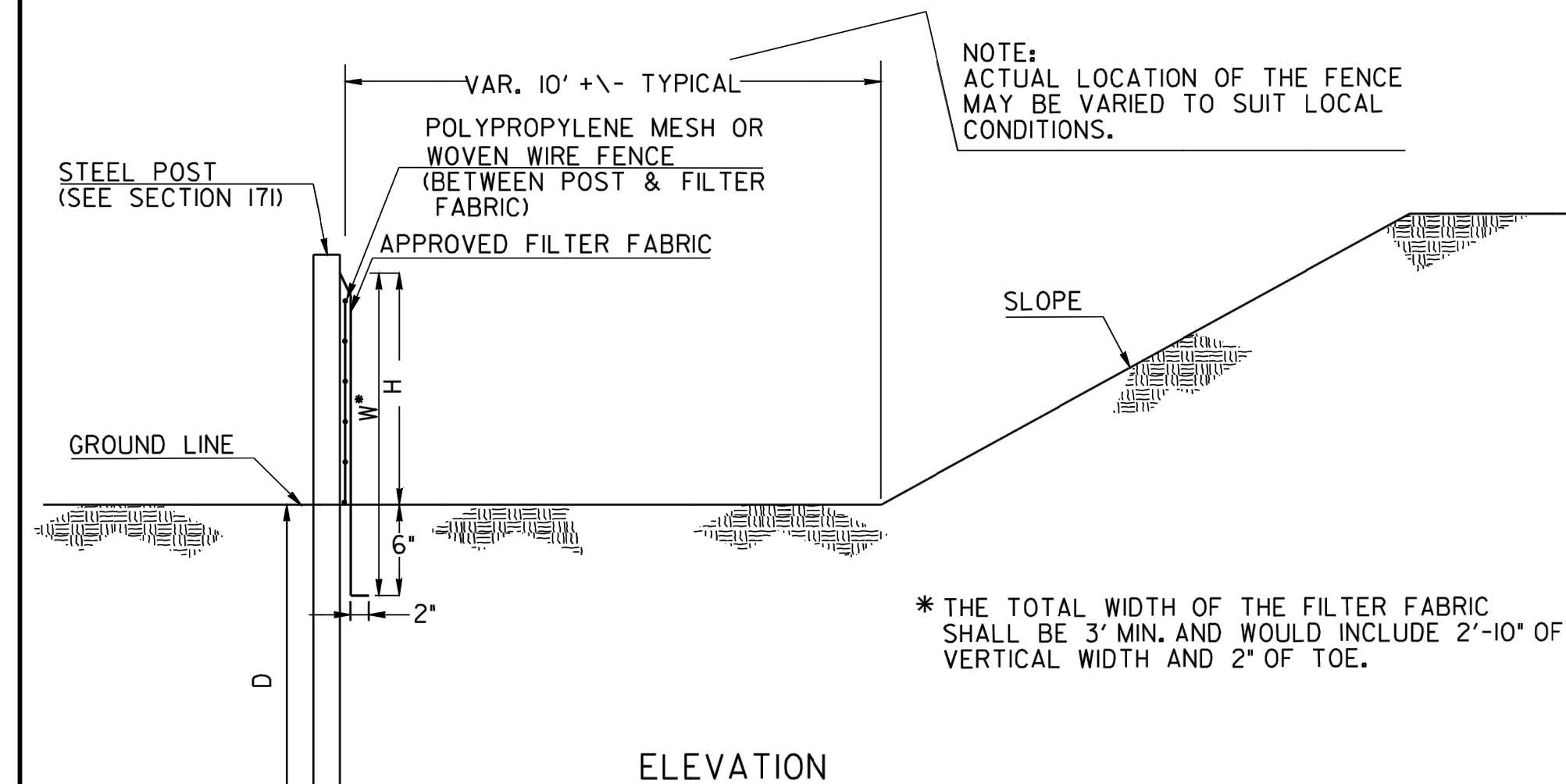
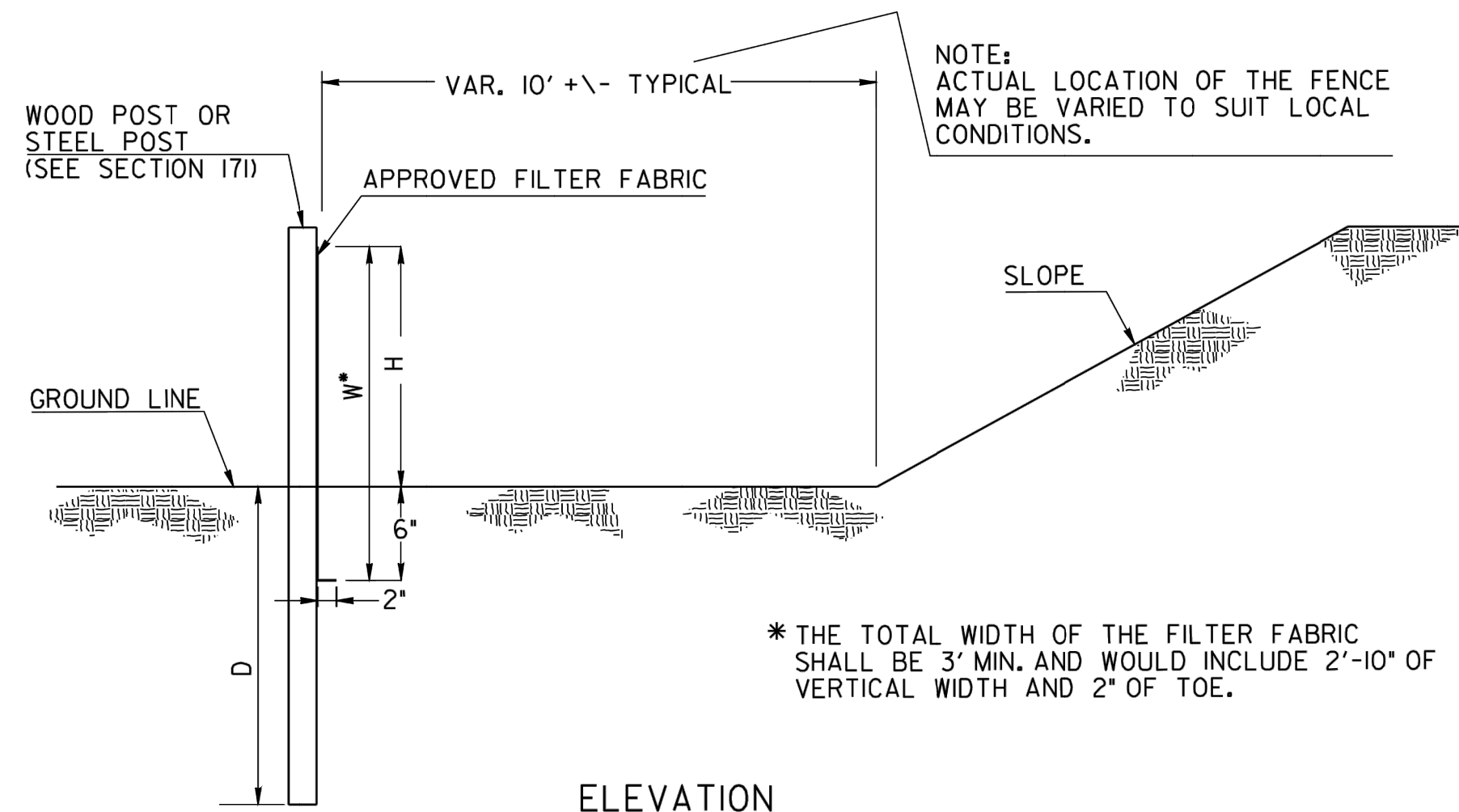
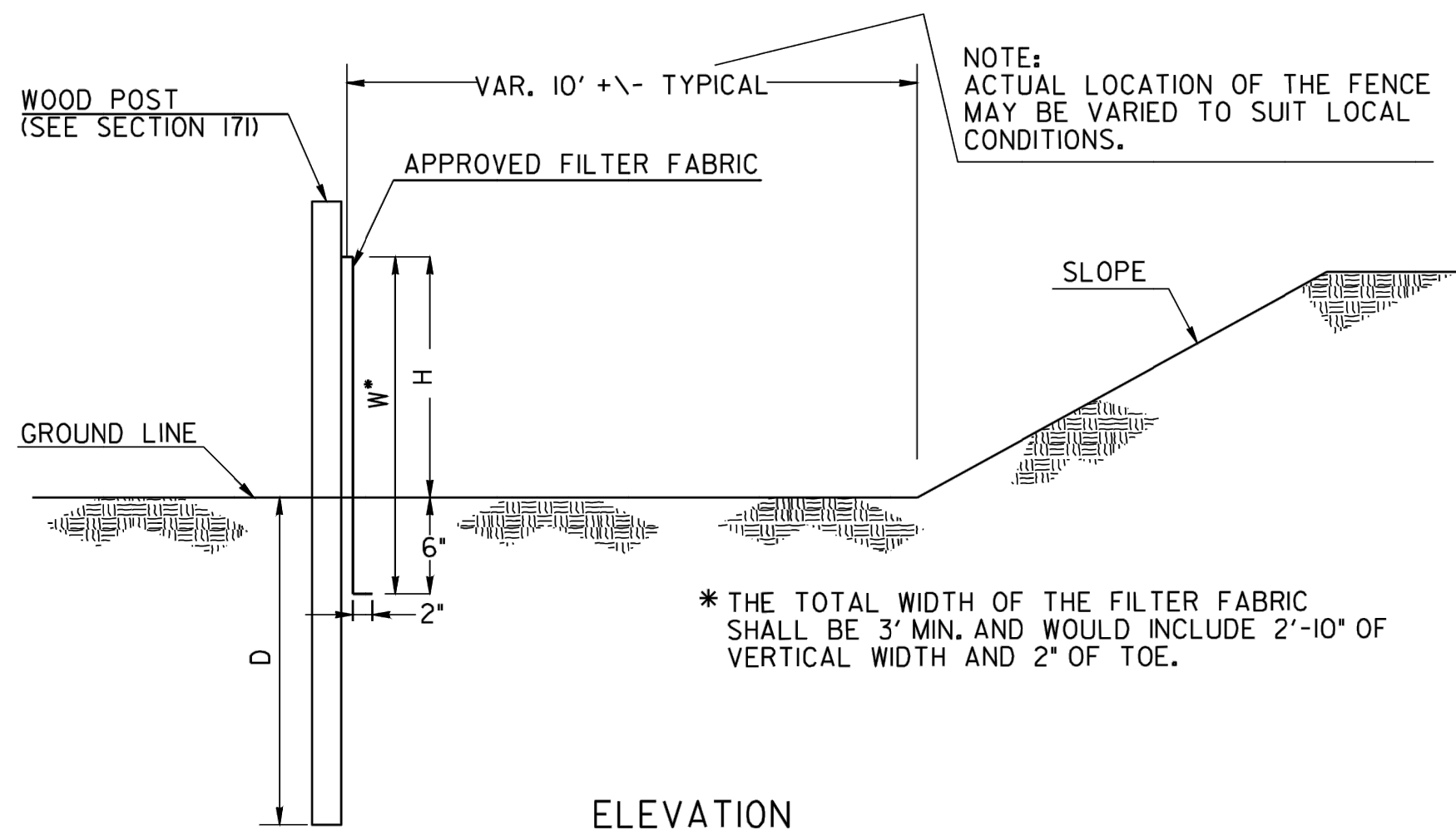
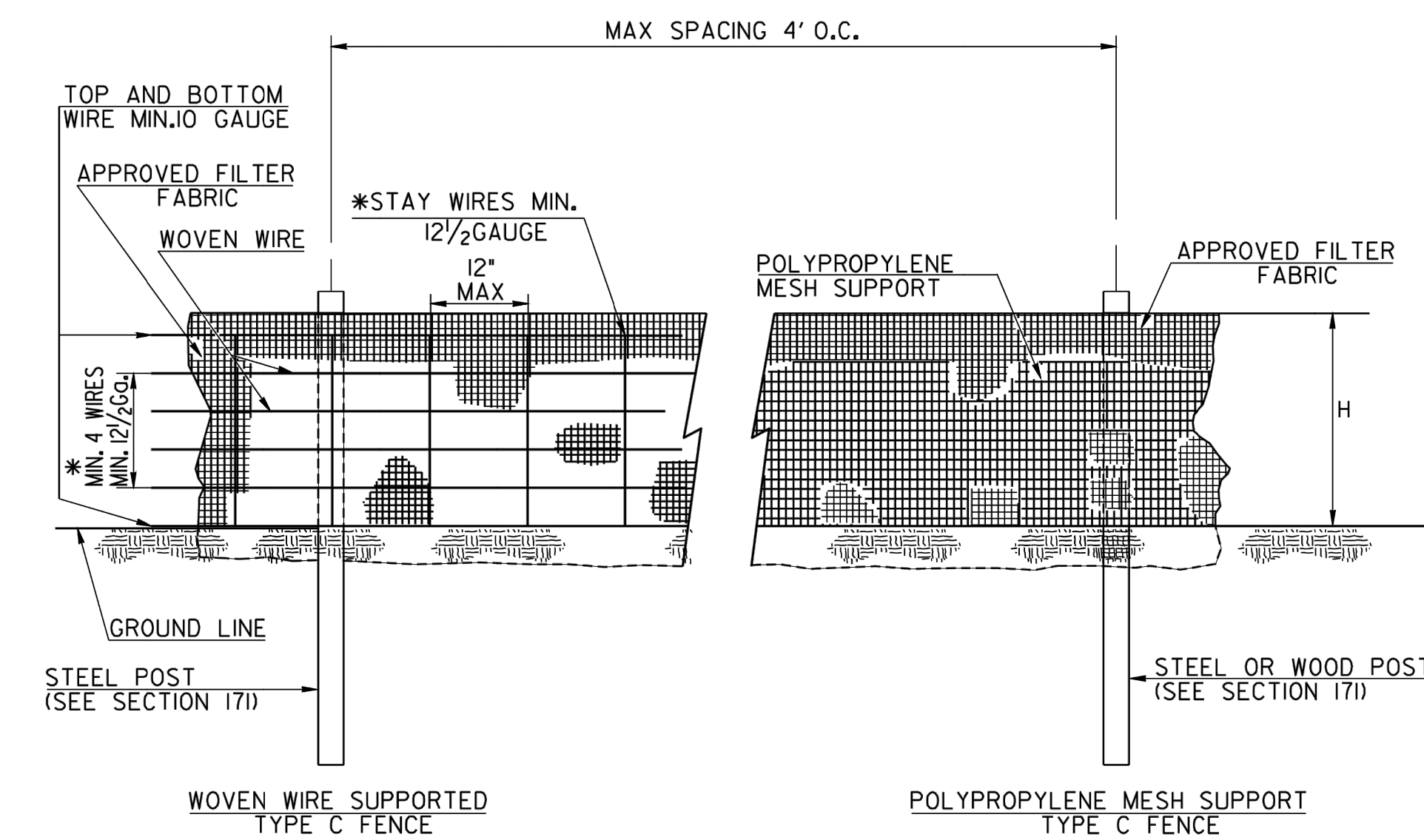
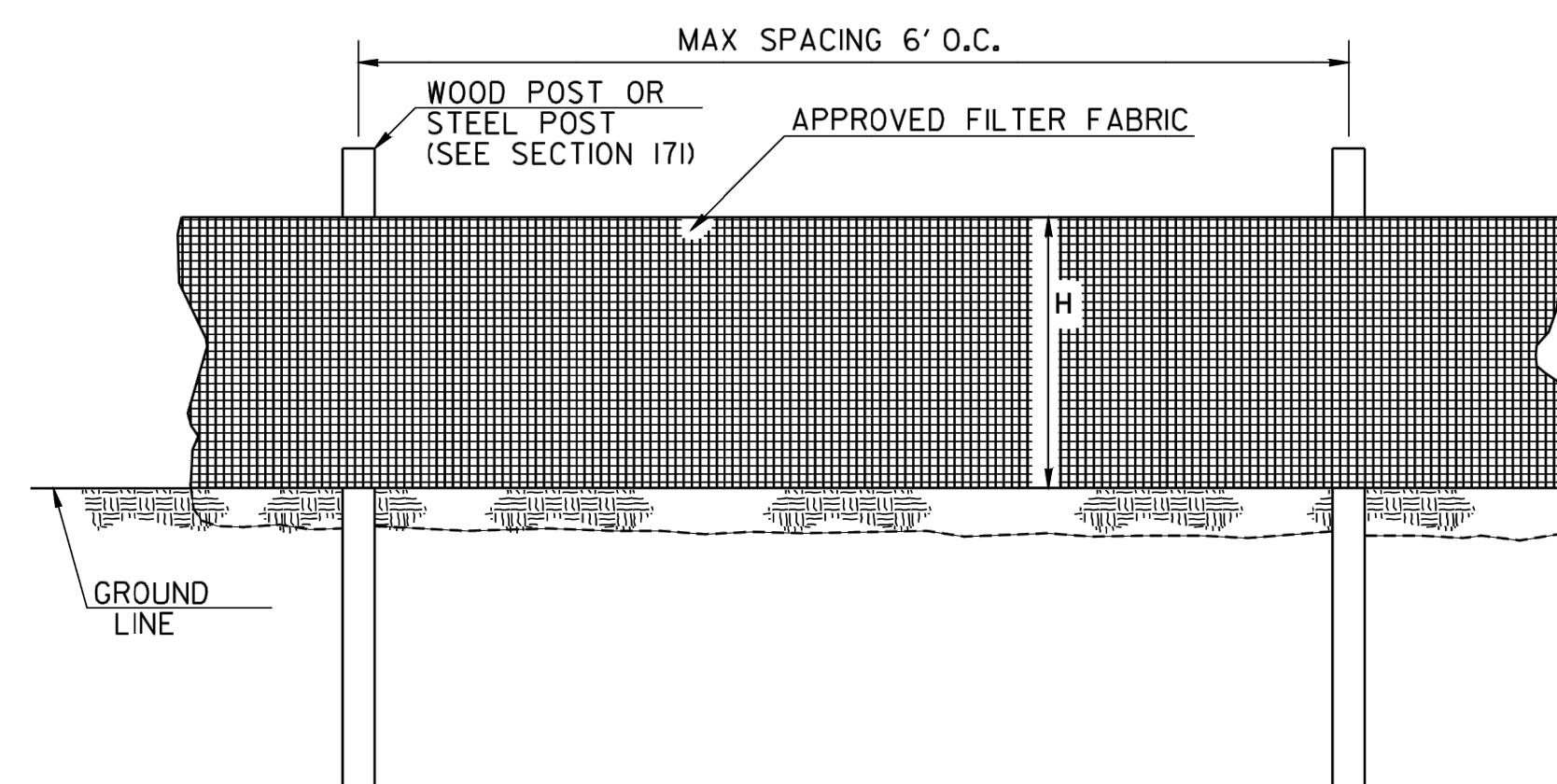
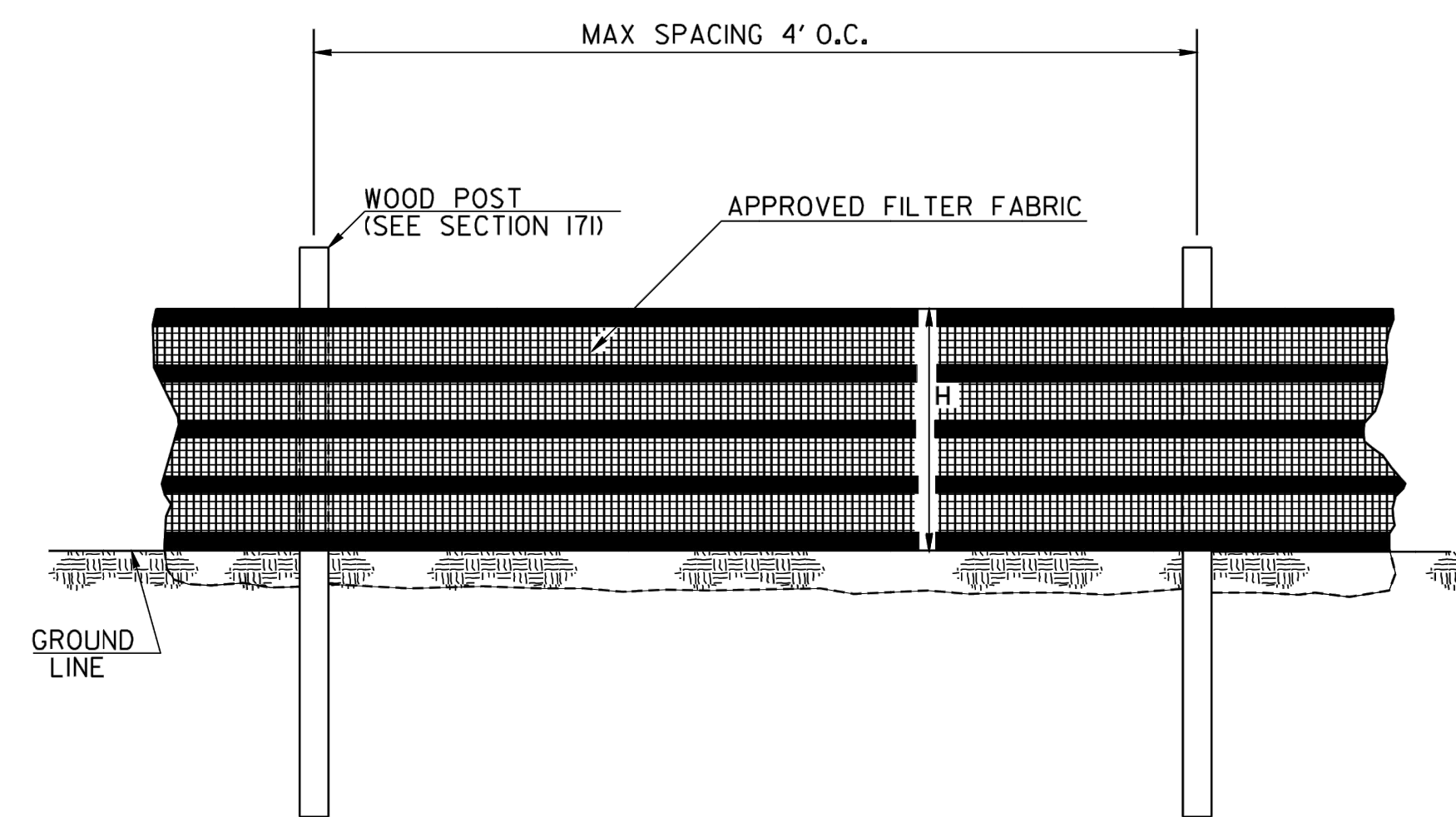
SPECIAL DETAIL
CONCRETE SIDEWALK DETAILS
CURB CUT (WHEELCHAIR) RAMPS

NO SCALE

MARCH 12, 2002

NUMBER
A3

DATE	REVISION



SINGLE ROW TYPE C SILT FENCE WITH HIGH TENSILE POLYPROPYLENE INTEGRATED SUPPORT WOVEN FABRIC

SINGLE ROW TYPE A SILT FENCE

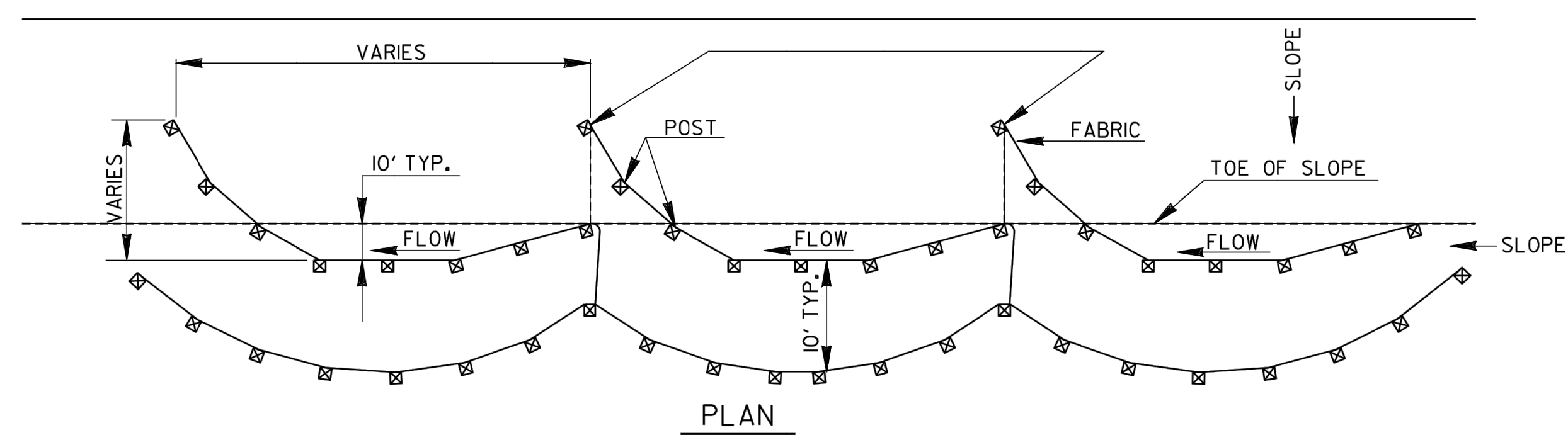
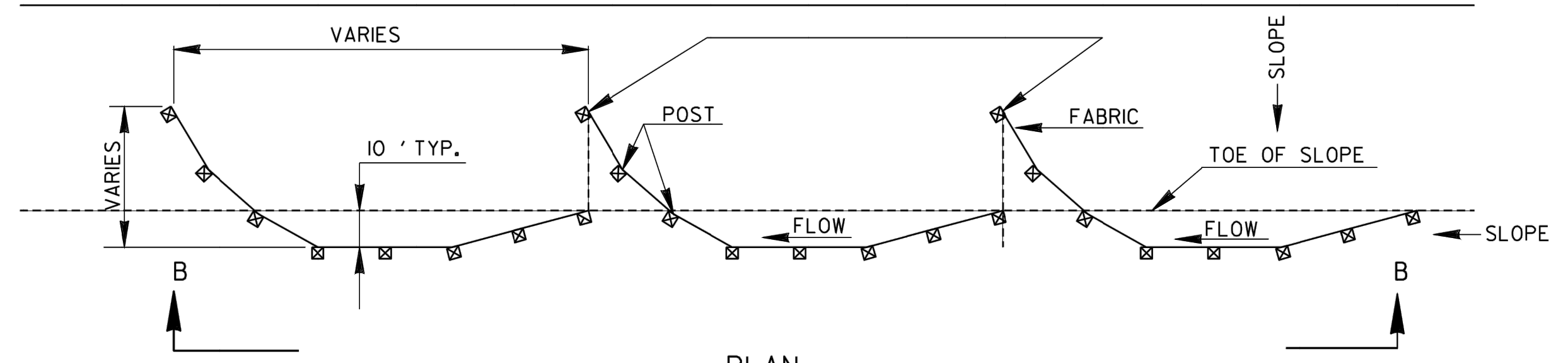
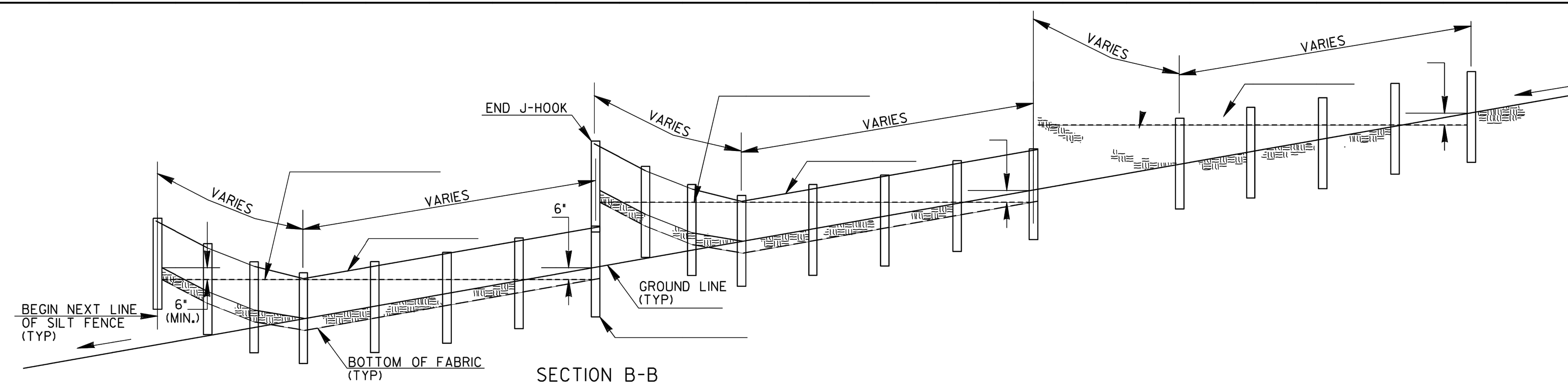
SINGLE ROW TYPE C SILT FENCE WITH WOVEN WIRE SUPPORT OR POLYPROPYLENE MESH SUPPORT

FENCE TYPE	POST LENGTH	H	D	W*	TYPICAL USES
TYPE "A"	4 FT.	2'-4"	1'-6"	3'-0"	
TYPE "C"	4 FT.	2'-4"	1'-6"	3'-0"	AT BRIDGE END ROLLS, DOUBLE ROW ALONG STREAMS, WETLANDS AND ENVIRONMENTALLY SENSITIVE AREAS FOR USE OF THIS MATERIAL IN FABRIC CHECKDAMS SEE D-24D.

NOTES:

1. WIRE STAPLES SHALL BE AT LEAST 17 GAUGE, WITH LEGS AT LEAST 1/2 INCHES LONG AND A CROWN AT LEAST 3/4 INCHES WIDE. NAILS SHALL BE AT LEAST 14 GAUGE, 1 INCH LONG, WITH BUTTON HEADS AT LEAST 3/4 INCHES WIDE.
2. SEE SECTION 171 FOR PLACEMENT OF NAILS OR STAPLES FOR TYPE A AND TYPE C FENCES.
3. THE VERTICAL WIRES FOR THE WOVEN WIRE SUPPORT FENCE SHALL HAVE A MAXIMUM SPACING OF 12 INCHES. THE TOP AND BOTTOM WIRES SHALL BE AT LEAST 10 GAUGE AND ALL OTHER WIRES SHALL BE AT LEAST 12 1/2 GAUGE.
4. TEMPORARY SILT FENCE INSTALLATION IS DIFFERENT THAN THE SILT RETENTION BARRIER INSTALLATION.
5. SEE SECTION 171 FOR SILT FENCE SPECIFICATIONS.
6. SEE SECTION 894 FOR FENCING SPECIFICATIONS.
7. SEE OPL-36 FOR A LIST OF APPROVED SILT FENCE FABRIC.
8. TEMPORARY SILT FENCE SHALL NOT BE PLACED WITHIN STATE WATERS UNLESS PERMITTED.

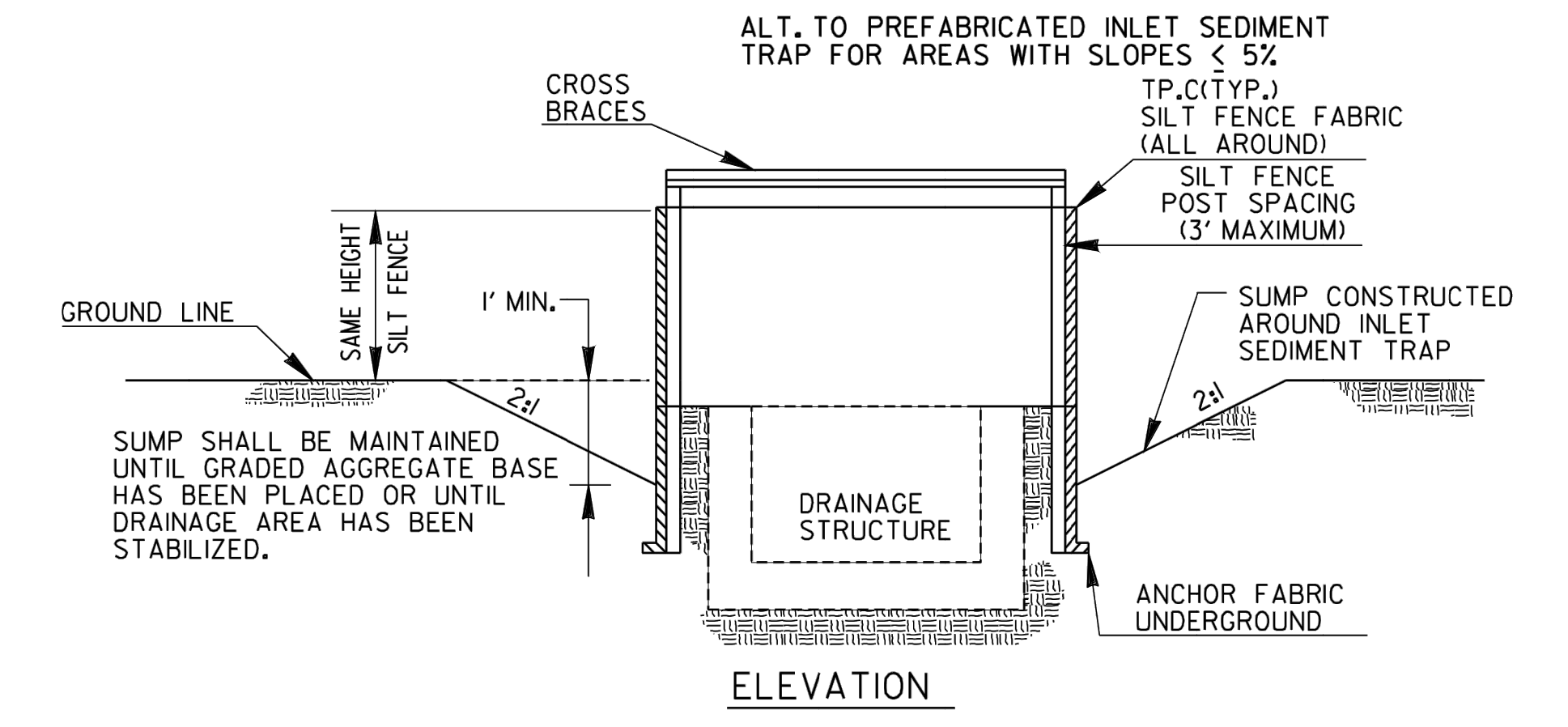
DATE		09-2022	
REVISION		ADDED HIGH TENSILE POLYPROPYLENE INTEGRATED FABRIC	
BY		AL	
DEPARTMENT OF TRANSPORTATION STATE OF GEORGIA CONSTRUCTION DETAIL TEMPORARY SILT FENCE			
JANUARY 2011		NO SCALE	
NUMBER		D-24A	
1 OF 4			



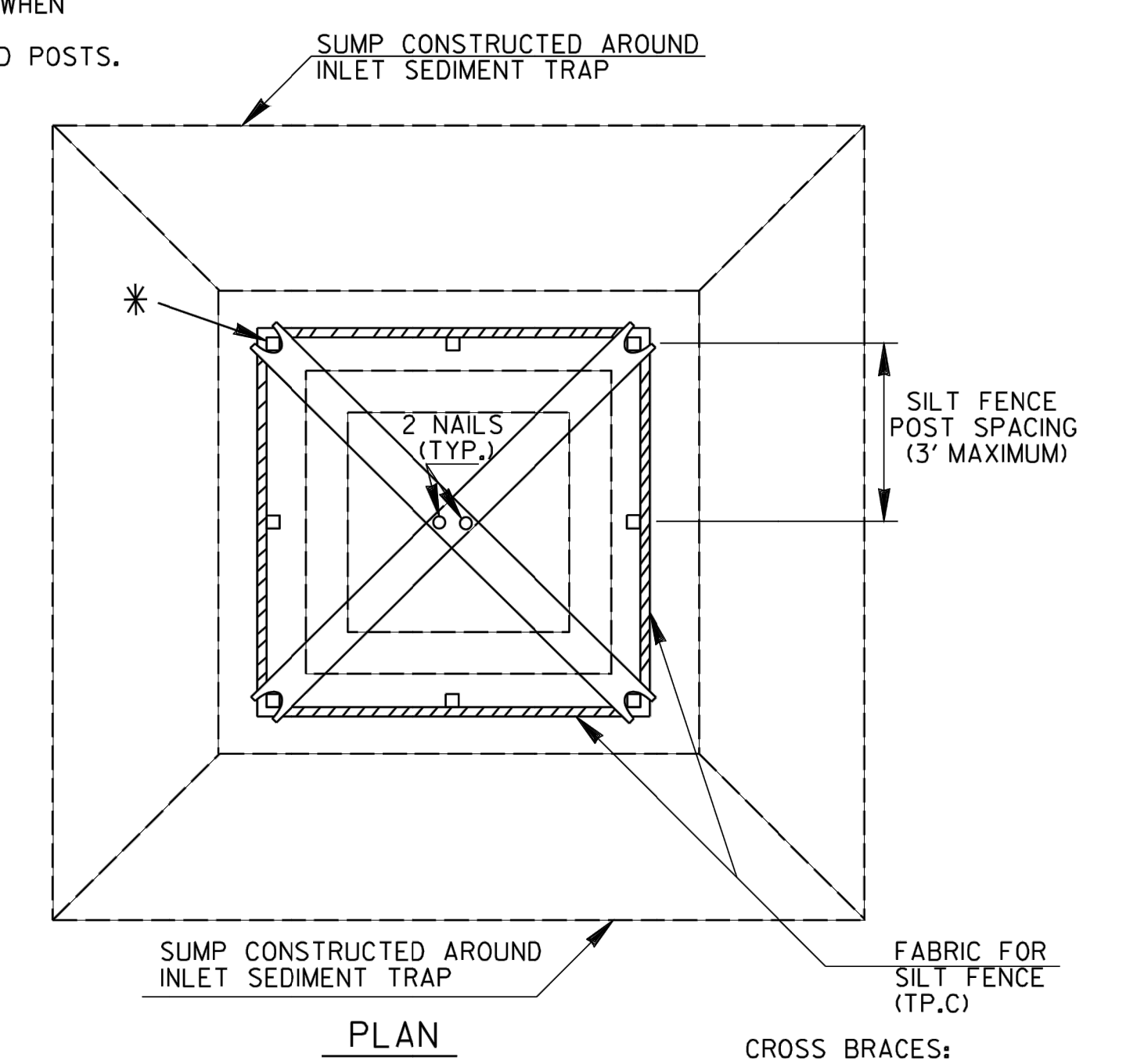
TYPICAL J HOOK SPACING		
SLOPE PERCENT	TYPE OF SILT FENCE	MINIMUM SPACING (FEET)
1% TO 2%	TYPE A OR TYPE C	100' ±
2% TO 3%	TYPE A OR TYPE C	50' ±
3% TO 4%	TYPE C	50' ±
4% TO 5%	TYPE C	25' ±

NOTE:
 1. IF THE GRADE IS BETWEEN 0 TO 1PERCENT, THE SILT FENCE SHALL BE PLACED ACROSS THE DITCH.
 2. TEMPORARY SILT FENCE SHALL NOT BE PLACED WITHIN STATE WATERS UNLESS PERMITTED.

TYPICAL LOCATION AROUND DROP INLETS



* CROSS BRACING REQUIRED WHEN USING "ALTERNATE" TYPE C PRODUCTS WHICH USE WOOD POSTS.



CROSS BRACES:
 TWO - 2 X 4's WITH ENDS TO FIT POST, PROVIDING STURDY SUPPORT, OR AN APPROVED ALTERNATE

NOTE:
 PAYMENT AS INLET SEDIMENT TRAP PER EACH.
 NOTE:
 SEE SEPARATE SHEET ENTITLED "TEMPORARY SILT FENCE DETAILS" FOR SILT FENCE ERECTION DETAILS.

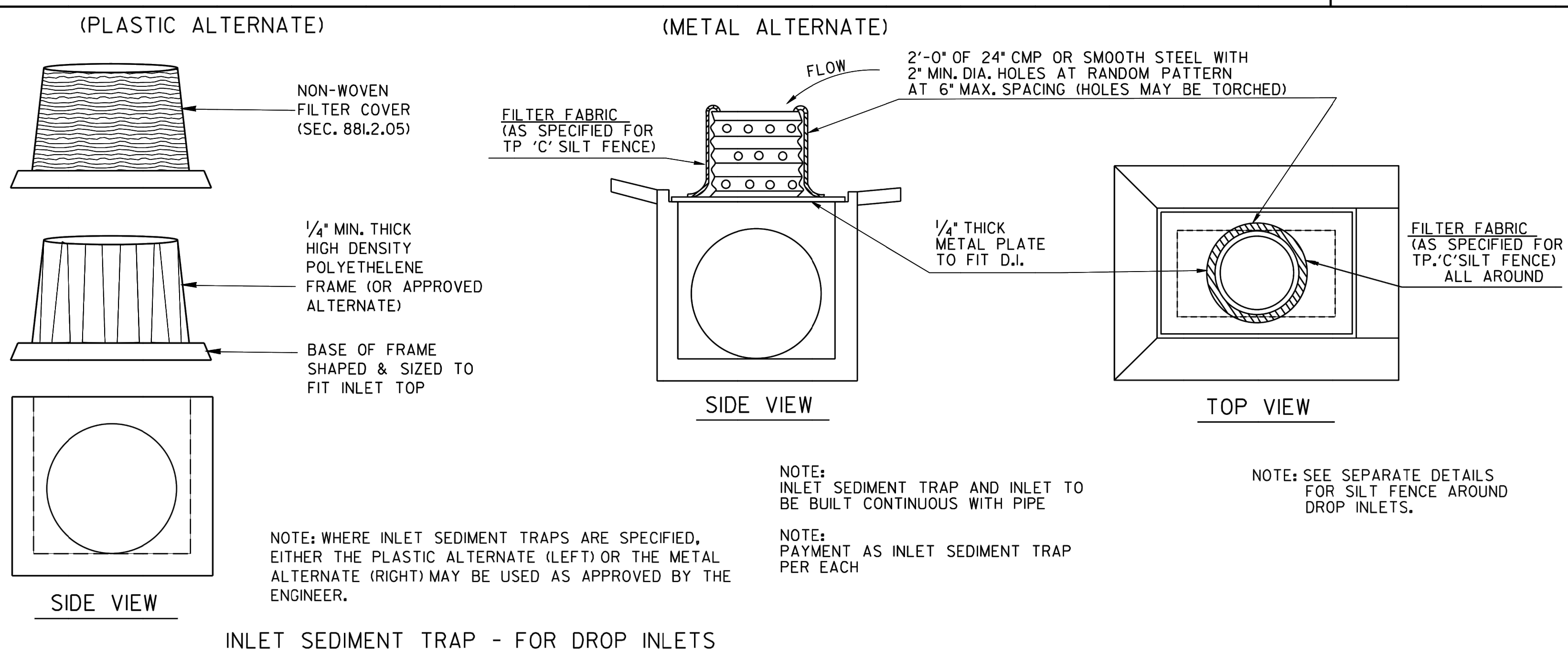
09-2022		DATE		DEPARTMENT OF TRANSPORTATION	
				STATE OF GEORGIA	
PLACEMENT CLARIFICATION		REVISION		CONSTRUCTION DETAILS	
				TEMPORARY SILT FENCE	
				J-HOOK, INLET SEDIMENT TRAPS	
BMS		BY		JANUARY 2011	
				NO SCALE	
				NUMBER	
				D-24C	
				(SHEET 3 OF 4)	

NOTE:
 THE DRAINAGE AREA ENTERING THE INLET SEDIMENT TRAP SHALL BE NO GREATER THAN ONE ACRE.

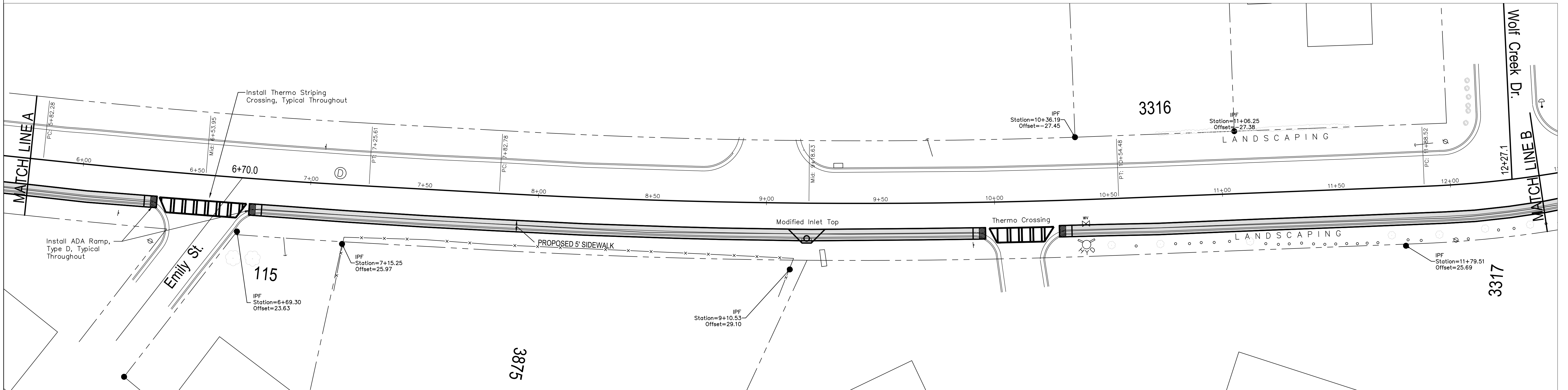
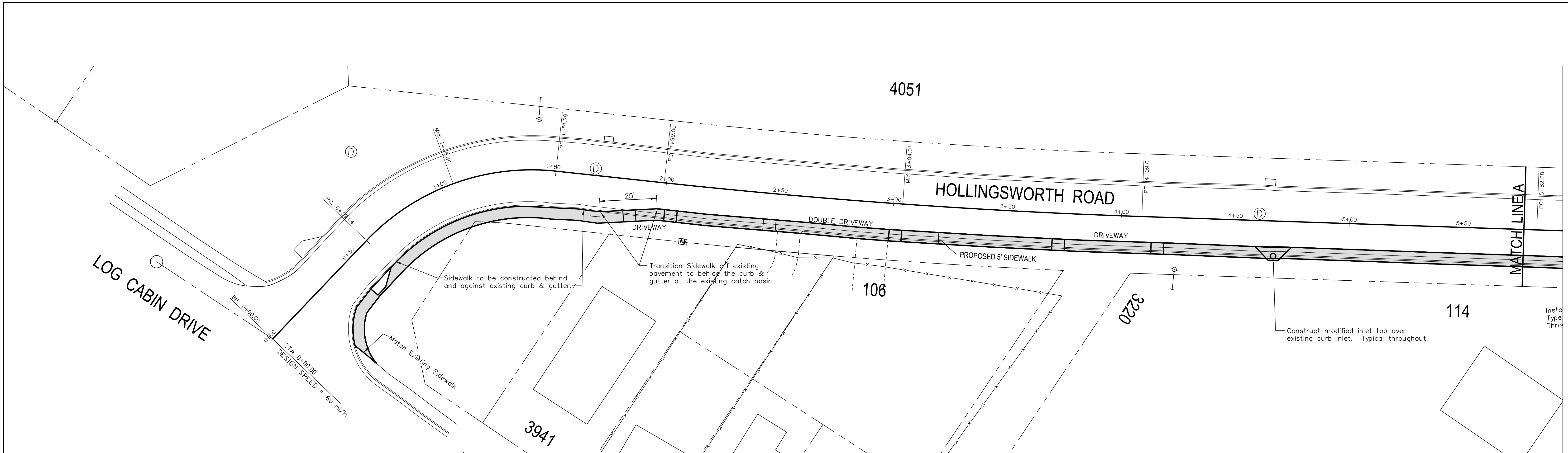
TYPICAL CONSTRUCTION SEQUENCE FOR INLET SEDIMENT TRAP ALTERNATE

- EXCAVATE APPROXIMATELY 4" TO 6" BELOW THE TOP OF THE INLET STRUCTURE.
- PLACE THE FRAME ONTO THE INLET STRUCTURE, ENSURING PROPER SEATING OF FRAME TO STRUCTURE.
- SLIDE THE FILTER OVER THE FRAME.
- FILL THE FILTER POCKETS WITH SOIL, #57 GRAVEL OR EQUIVALENT. THE FILTER POCKETS SHOULD BE COMPLETELY FILLED TO ENSURE A GOOD SEAL BETWEEN THE GROUND AND INLET STRUCTURE.
- BACK FILL AROUND THE FRAME AND FILTER ASSEMBLY IS NOT REQUIRED TO COMPLETE INSTALLATION; HOWEVER, BACK FILLING MAY BE NECESSARY TO COMPLETE EXCAVATION REQUIREMENTS FOR THE SITE.

NOTE:
 INLET SEDIMENT TRAP ALTERNATE SHALL BE AS APPROVED BY THE GA. D.O.T. OFFICE OF MATERIALS & RESEARCH. DETAILS & SPECIFICATIONS NOT SHOWN ARE PER THE MANUFACTURER'S REQUIREMENTS.



INLET SEDIMENT TRAP - FOR DROP INLETS



PLAN VIEW
for
Hollingsworth Road Sidewalk Improvements
Land Lots 115, 116 & 152
Macon-Bibb County
4th Land District
Georgia

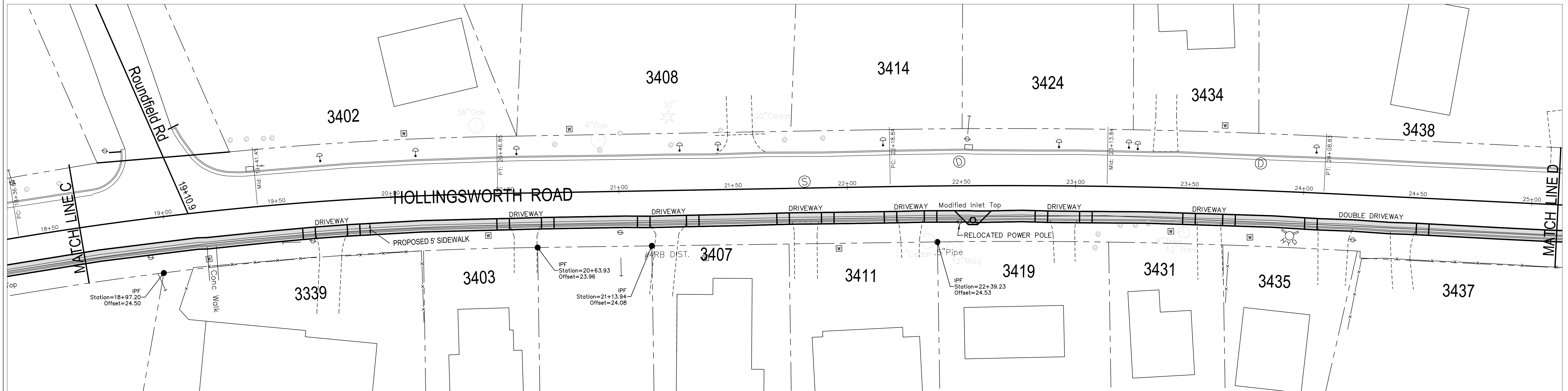
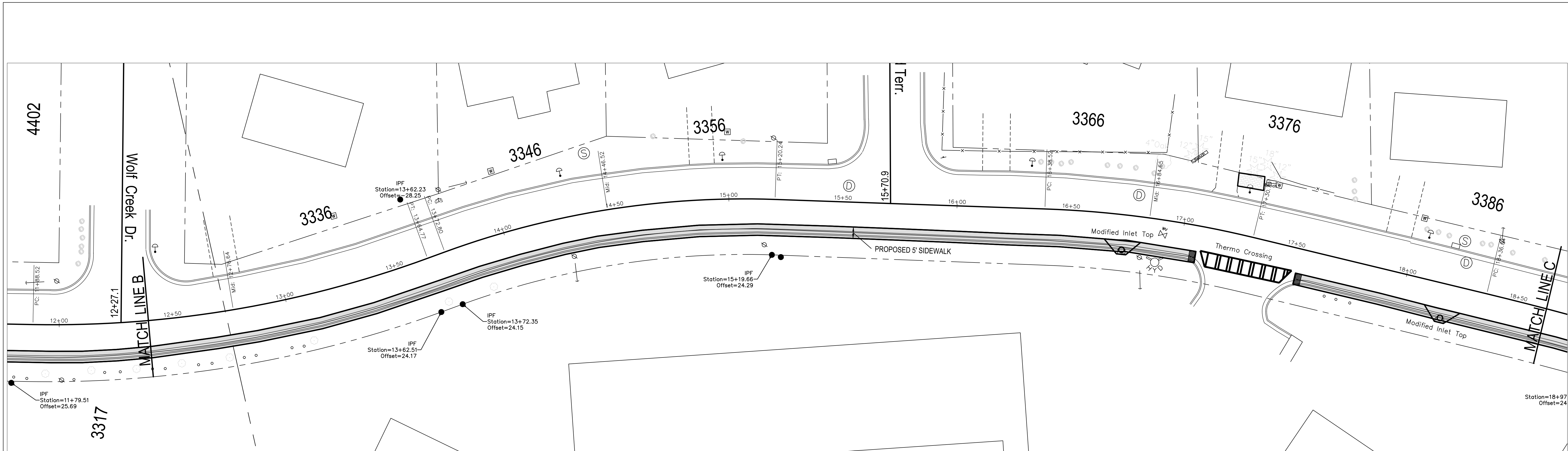
SCALE: 1" = 20'
DATE: Aug. 2023

DRAWN BY: FCB
PAGE: 13-0001
DRAWING NO.: Hollingsworth Rd Sidewalk2.dwg

Macon-Bibb County Engineer's Office

DATE	REVISION





PLAN VIEW
 for
 Hollingsworth Road Sidewalk Improvements

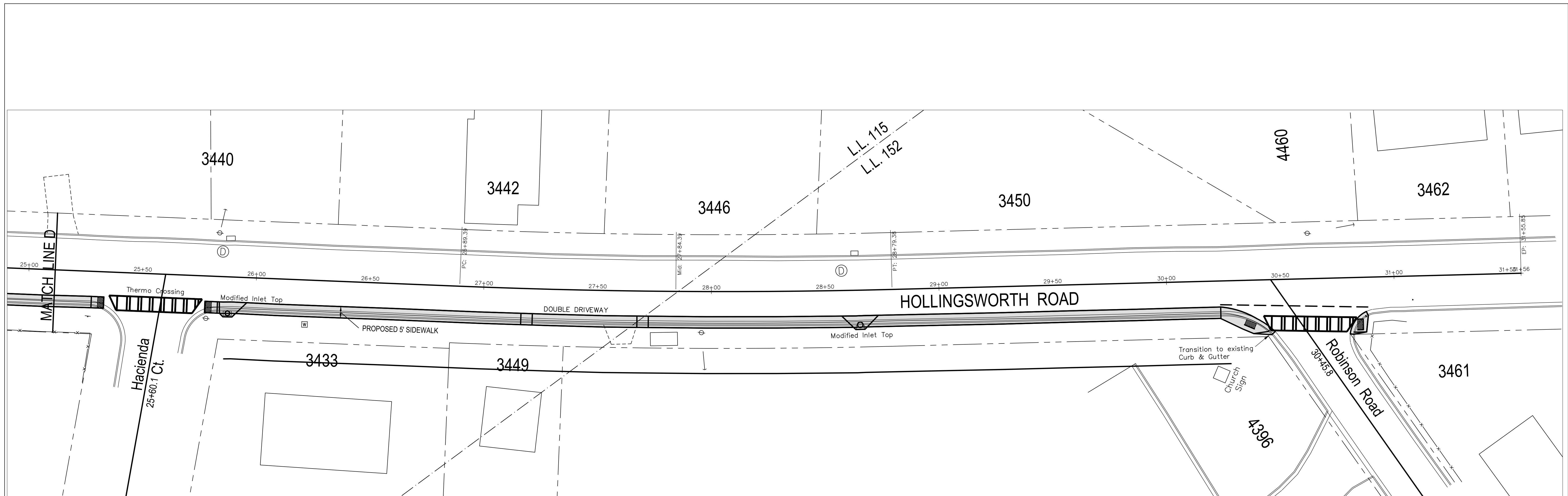
Land Lots 115, 116 & 152
 Macon-Bibb County
 4th Land District
 Georgia

SCALE: 1" = 20'
 DATE: Aug. 2023

DRAWN BY: FCB
 PAGE: 13-0002
 DRAWING NO.:
 Hollingsworth Rd Sidewalk2.dwg

DATE REVISION

Macon-Bibb County Engineer's Office



PLAN VIEW
for
Hollingsworth Road Sidewalk Improvements
Land Lots 115, 116 & 152
Macon-Bibb County

4th Land District
Georgia

SCALE: 1" = 20'
DATE: Aug. 2023

DRAWN BY: FCB
PAGE: 13-0003
DRAWING NO.: Hollingsworth Rd Sidewalk2.dwg

Macon-Bibb County Engineer's Office

DATE	REVISION

