



**DESIGN INSPIRATION**

- APPROXIMATELY 7' HT
- BRICK VENEER AND CONCRETE BASE - BY OTHERS
- UP LIGHTS FOR STATUE BY OTHERS

**ELEMENTS TO INCLUDE FROM COMMITTEE**

- ROSA PARKS STATUE – LARGE, FLATTERING ACCURATE DEPICTION, DIGNIFIED COUNTENANCE
- CONCISE INTERPRETIVE INFORMATION – ROSA PARK'S LIFE WORK, HISTORIC CONTRIBUTIONS
- PICTORIAL PANEL WITH CONCISE INFORMATION – WOMEN WHO PRECEDED ROSA PARKS IN BUS INTEGRATION RESISTANCE



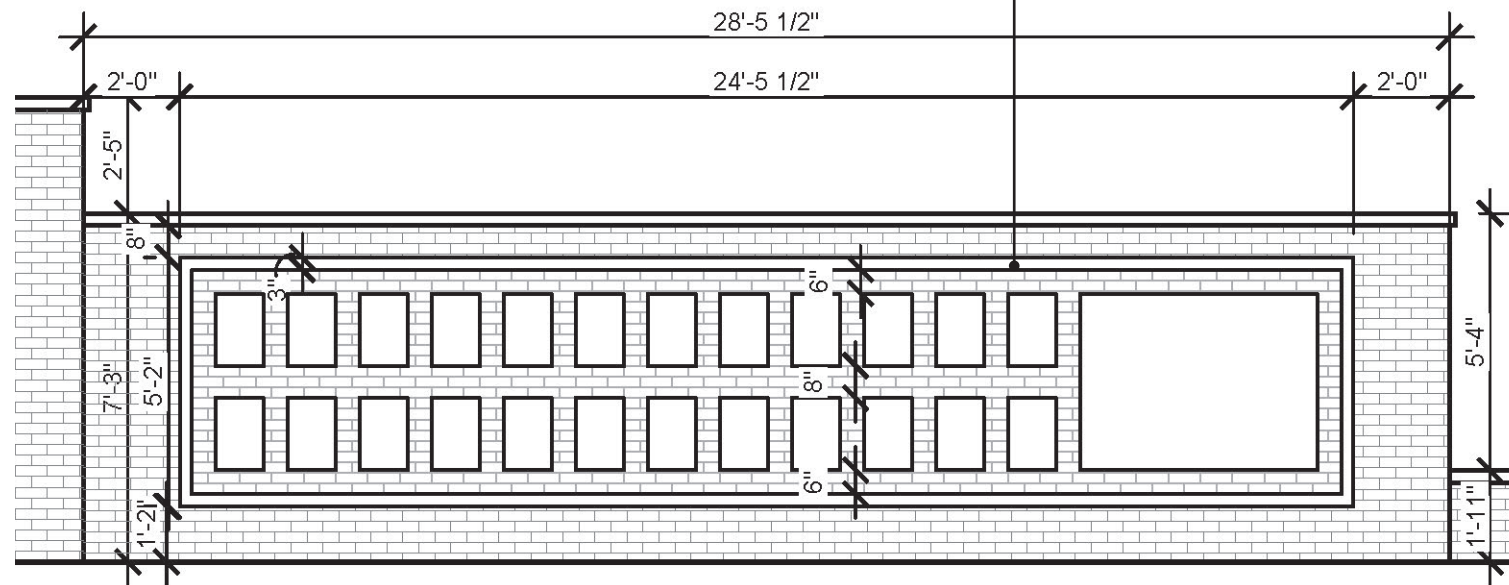
**OVERALL PARK VIEW**



DESIGN INSPIRATION

**BRICK MEMORIAL WALL**

- BRONZE PLAQUES SET IN RECESSED BRICK PANEL
- OVERALL WALL HEIGHT 7'-3"
- INLAY SPACE 5'-2" X 24'-5"



CONSTRUCTION DETAIL AND DIMENSIONS - WALL BY OTHERS

**ELEMENTS TO INCLUDE FROM COMMITTEE**

• PICTORIAL HONOREES WITH CONCISE CAPTIONS

1. MS. OZZIE BELL MCKAY
2. DR. D.T.WALTON
3. 1962 BUS BOYCOTT LEADERS: REV. E.B. PASCAL, REV. E.S. EVANS, REV. VAN J. MALONE, AND REV. JOSE RANCIFER
4. BISHOP HENRY MCNEAL TURNER
5. MS. LUCY CRAFT LANEY
6. MS. MINNIE SMITH
7. U.S. CONGRESSMAN JEFFERSON FRANKLIN LONG
8. MR. CHARLES HENRY DOUGLASS
9. MR. WILLIAM RANDALL SR.
10. JUDGE THOMAS JACKSON

• HISTORIC HONOREES LISTED WITH CONCISE CAPTIONS

1. ALDERMAN EDWARD WOODLIFF
2. REV. THEOPHILUS GOULD STEWARD
3. MR. LEWIS HENRY WILLIAMS
4. MR. PETER G. APPLING
5. MS. METTA T. DANFORTH
6. MS. ROSA JACKSON
7. MS. EUGENIA HAMILTON
8. MS. HESTER BIVINS
9. MS. MATILDA HARTLEY
10. REV. JULIUS HOPE
11. QUEEN MOTHER MRS. SARAH MINCEY HUNT

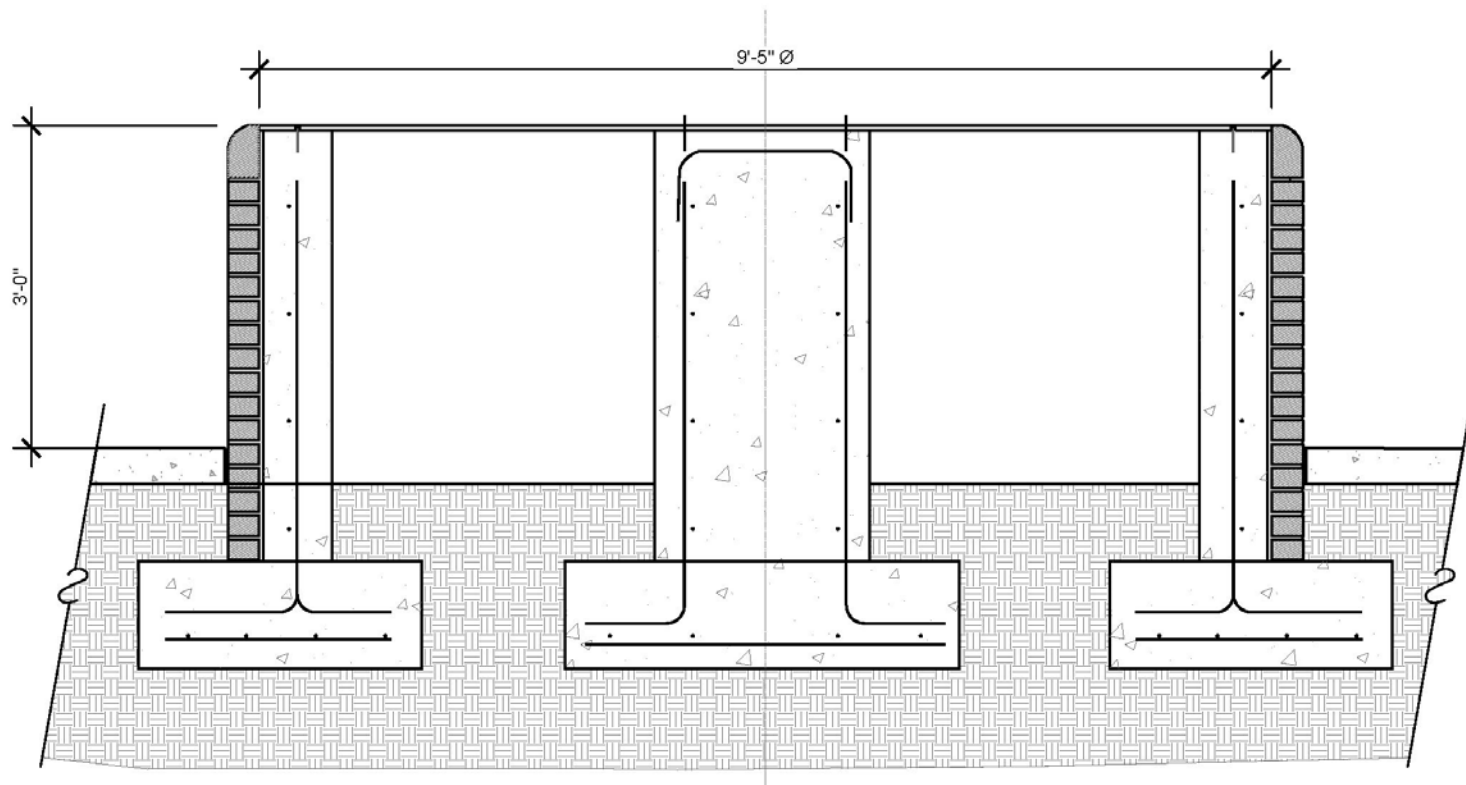
• MACON LYNCHINGS WITH CONCISE CAPTIONS

1. PAUL JONES 1919,
2. JOHN "COCKY" GLOVER 1922



### DESIGN INSPIRATION - HISTORICAL MAP MONUMENT

- 9'-5" DIAMETER BRONZE MAP PANEL
- HISTORIC DOWNTOWN MACON



CONSTRUCTION DETAIL AND DIMENSIONS - BASE BY OTHERS

### ELEMENTS TO INCLUDE FROM COMMITTEE

- INFORMATIONAL PANEL WITH BIRD'S EYE HISTORIC MAP DEPICTING KEY HISTORIC FEATURES
1. CITY HALL
  2. THE MACON VOLUNTEERS ARMORY BUILDING
  3. SOUTHERN TRUST BUILDING (WILLIE C. HILL)
  4. MACON CITY AUDITORIUM
  5. FORMER SHRINER'S TEMPLE
  6. ST. JOSEPH'S CATHOLIC CHURCH
  7. FIRST BAPTIST CHURCH OF CHRIST
  8. FIRST BAPTIST CHURCH
  9. WALTON BUILDING
  10. HUTCHINGS FUNERAL HOME
  11. STEWARD CHAPEL AME CHURCH
  12. RUTH HARTLEY MOSLEY WOMEN'S CENTER
  13. WASHINGTON AVENUE PRESBYTERIAN CHURCH
  14. HOLSEY TEMPLE CME CHURCH
  15. POPLAR STREET SLAVE MART LOCATIONS
  16. HISTORIC COTTON AVE
  17. VISITS DR. MARTIN LUTHER KING, JR., AND MRS. MARY MCCLEOD BETHUNE