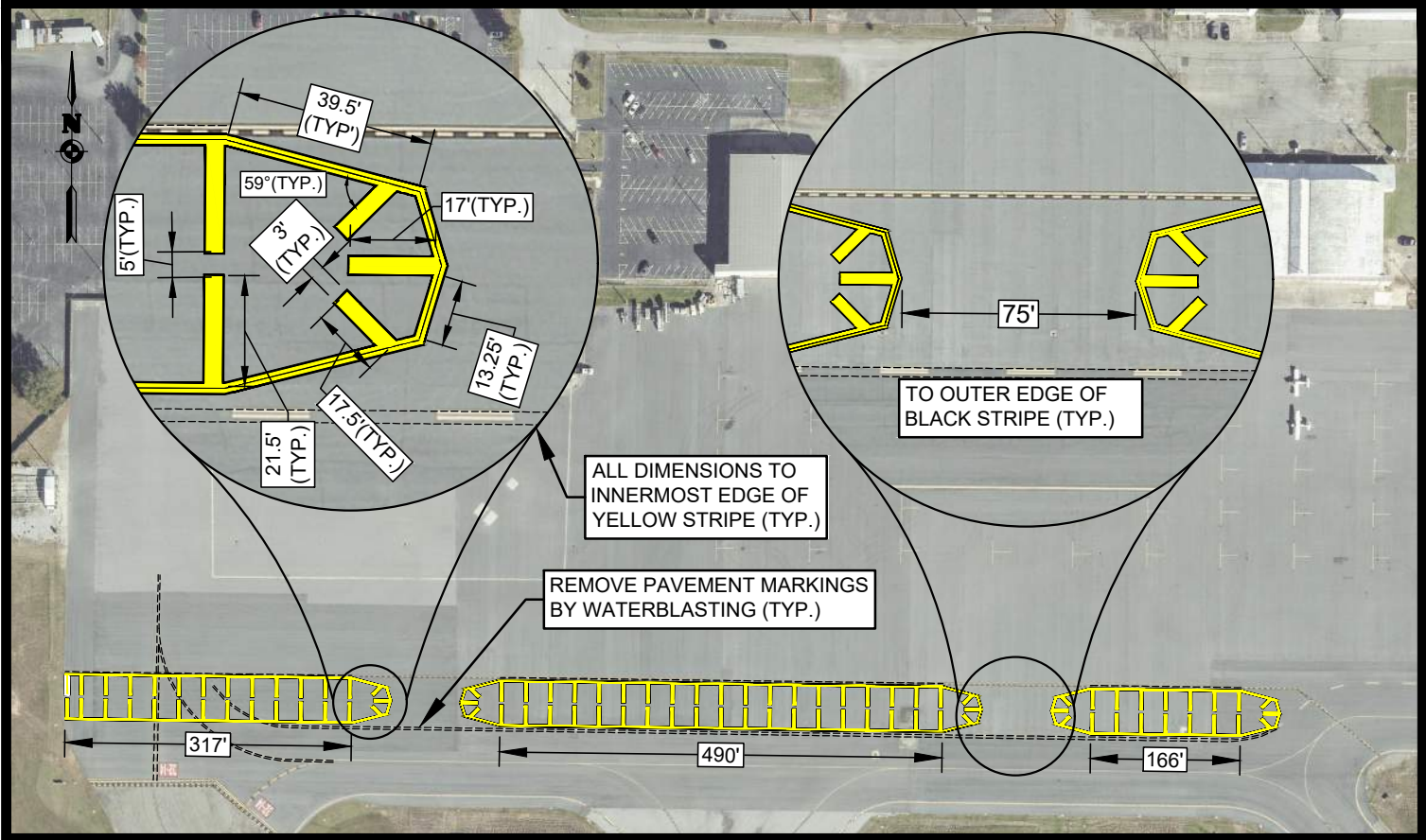
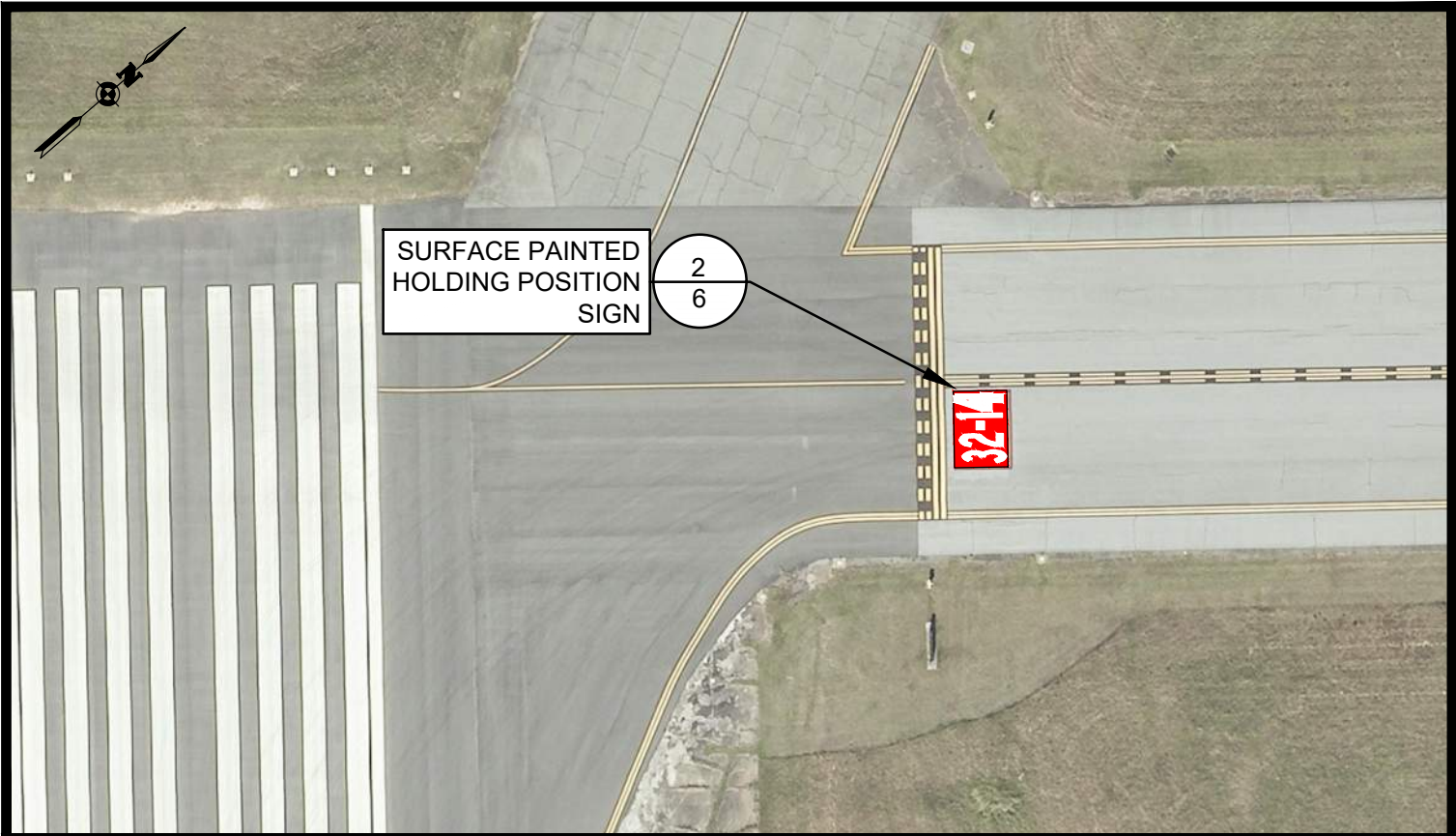


Middle Georgia Regional Airport
 1000 Terminal Drive Suite 100
 Macon, Georgia 31216
 (478) 219-1138
 www.iflymacon.com

Project: **AIRPORT MARKING**
 Drawing:
 Owner: MACON-BIBB COUNTY
 700 POPLAR STREET
 MACON, GEORGIA 31201
 (478) 751-7400

Project No.:
 Drawing No.: **1/9**
 Scale: **N.T.S.**
 Date: **June 2022**



Middle Georgia Regional Airport
 1000 Terminal Drive Suite 100
 Macon, Georgia 31216
 (478) 219-1138
 www.iflymacon.com

Project: **AIRPORT MARKING**

Drawing:

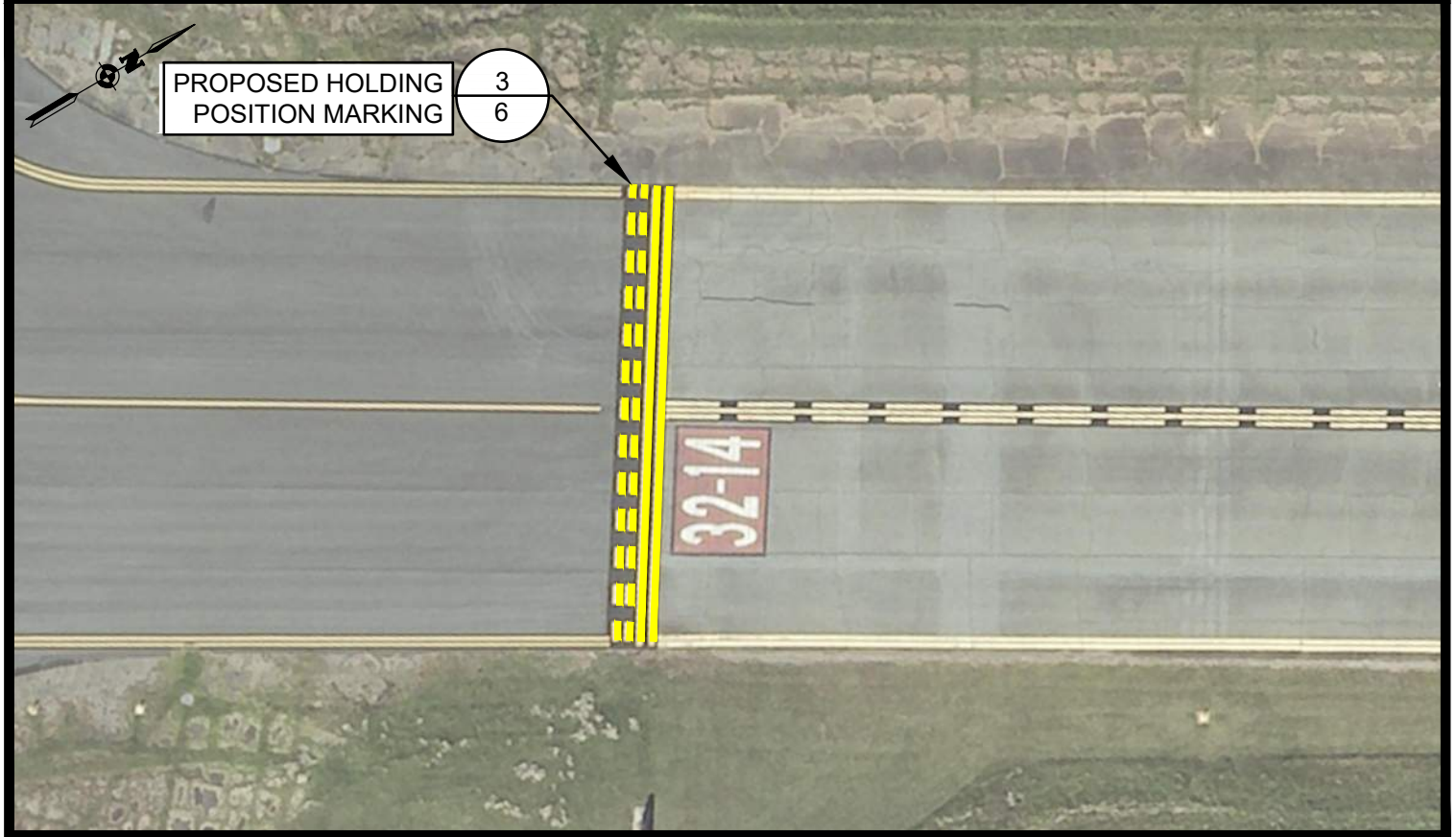
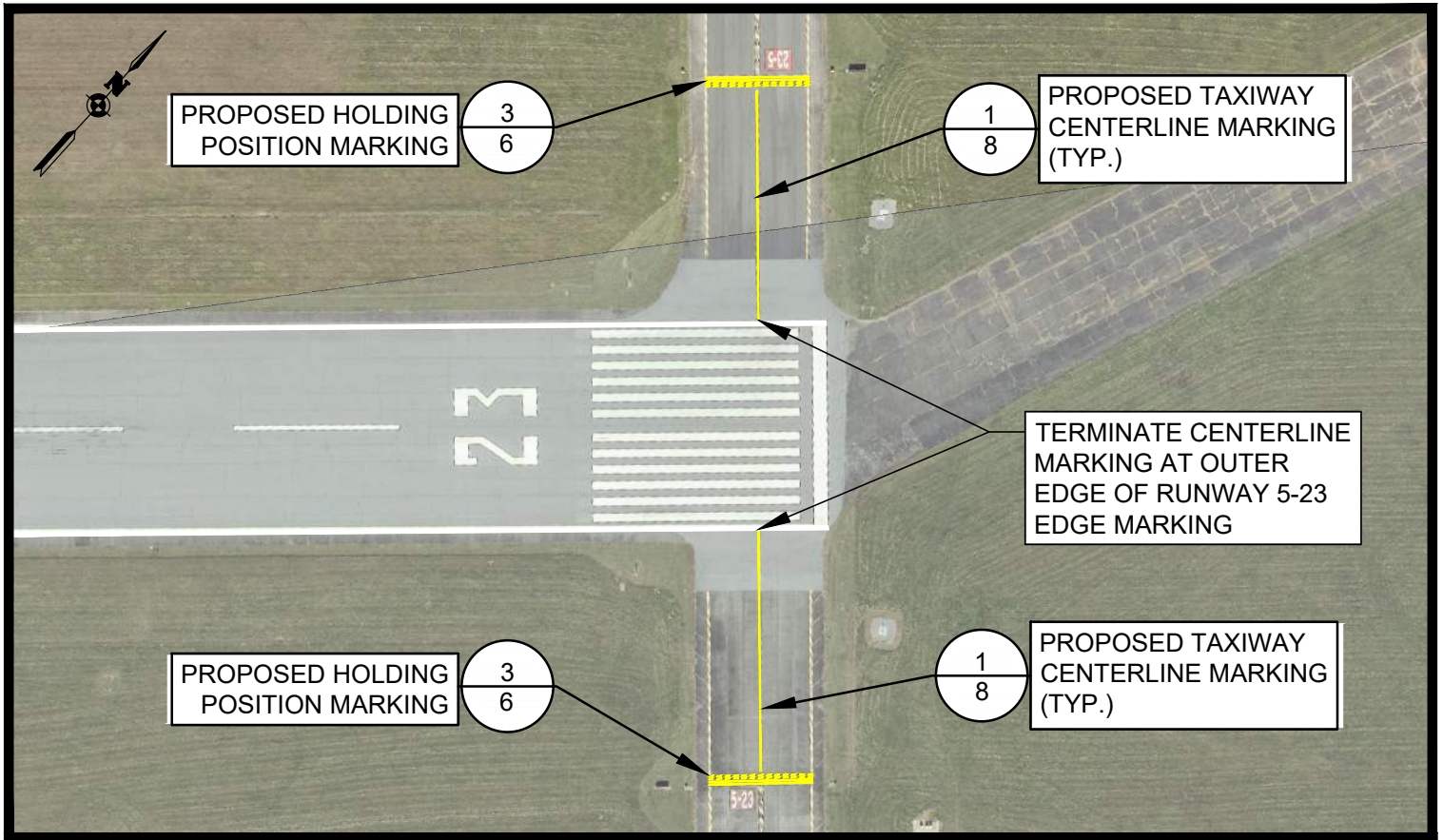
Owner: MACON-BIBB COUNTY
 700 POPLAR STREET
 MACON, GEORGIA 31201
 (478) 751-7400

Project No.:

Drawing No.: **2/9**

Scale: **N.T.S.**

Date: **June 2022**



Middle Georgia Regional Airport
 1000 Terminal Drive Suite 100
 Macon, Georgia 31216
 (478) 219-1138
www.iflymacon.com

Project: **AIRPORT MARKING**

Drawing:

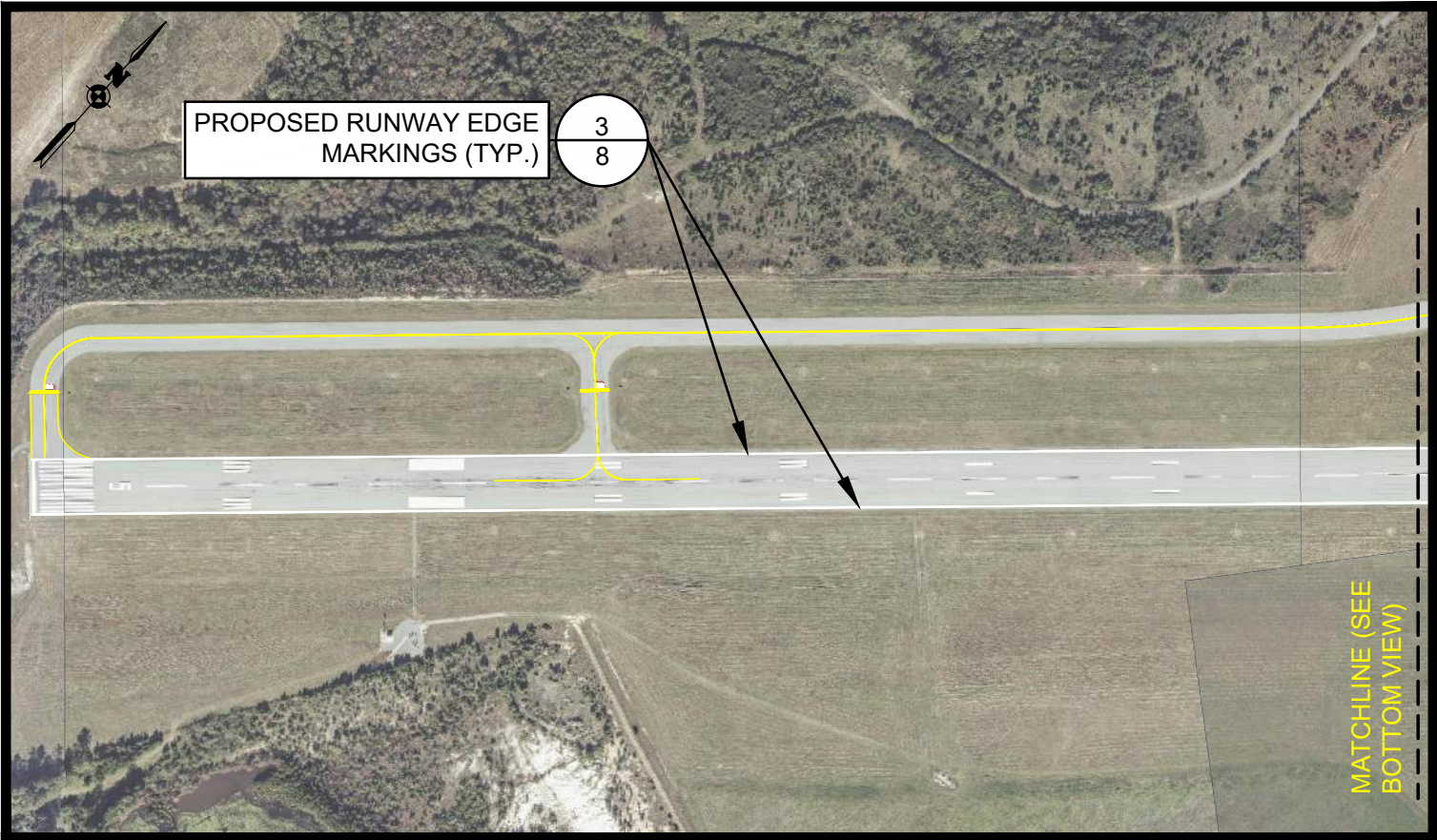
Owner: MACON-BIBB COUNTY
 700 POPLAR STREET
 MACON, GEORGIA 31201
 (478) 751-7400

Project No.:

Drawing No.: **3/9**

Scale: **N.T.S.**

Date: **June 2022**




Middle Georgia Regional Airport
 1000 Terminal Drive Suite 100
 Macon, Georgia 31216
 (478) 219-1138
 www.iflymacon.com

Project: **AIRPORT MARKING**

Drawing:

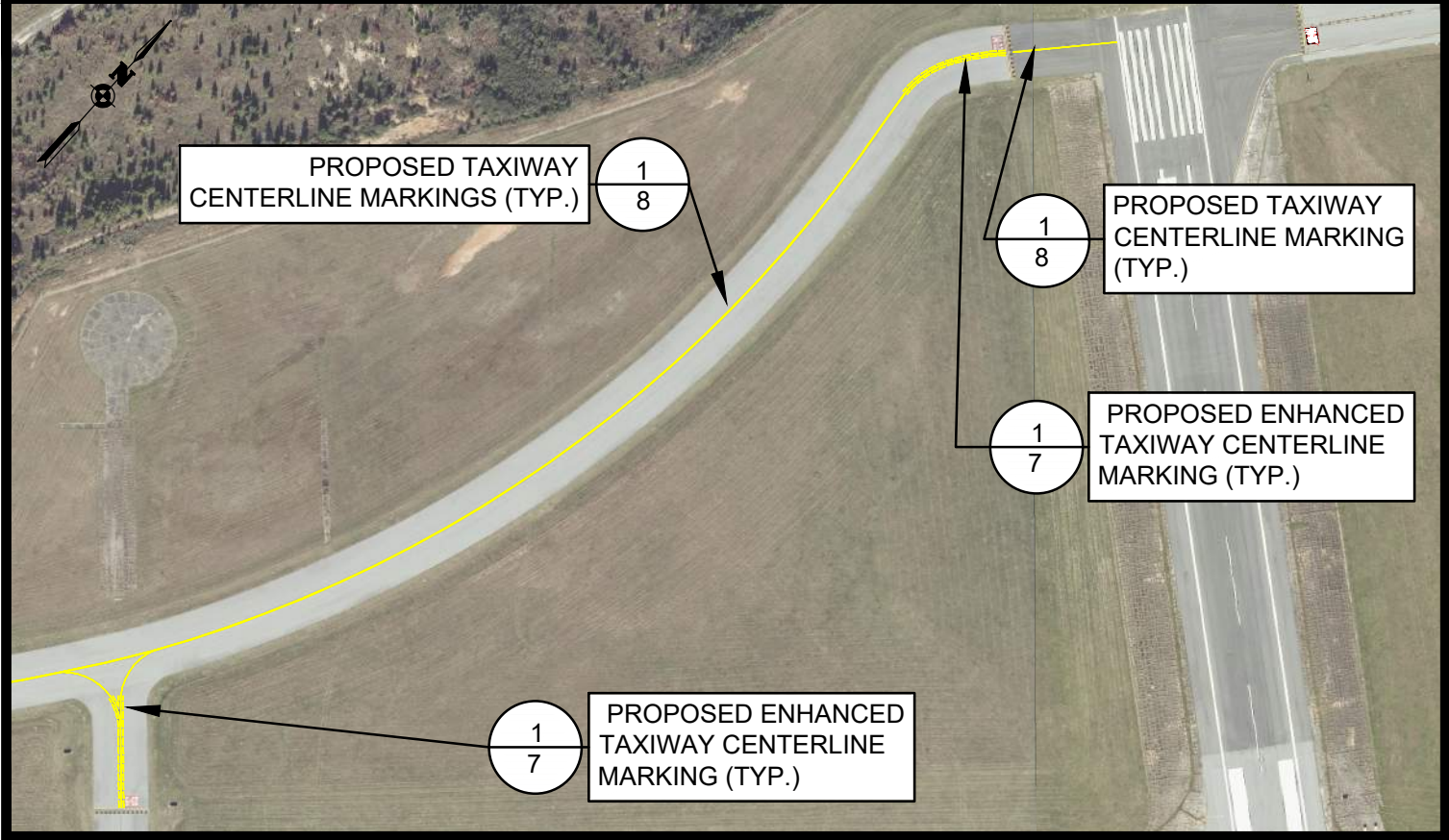
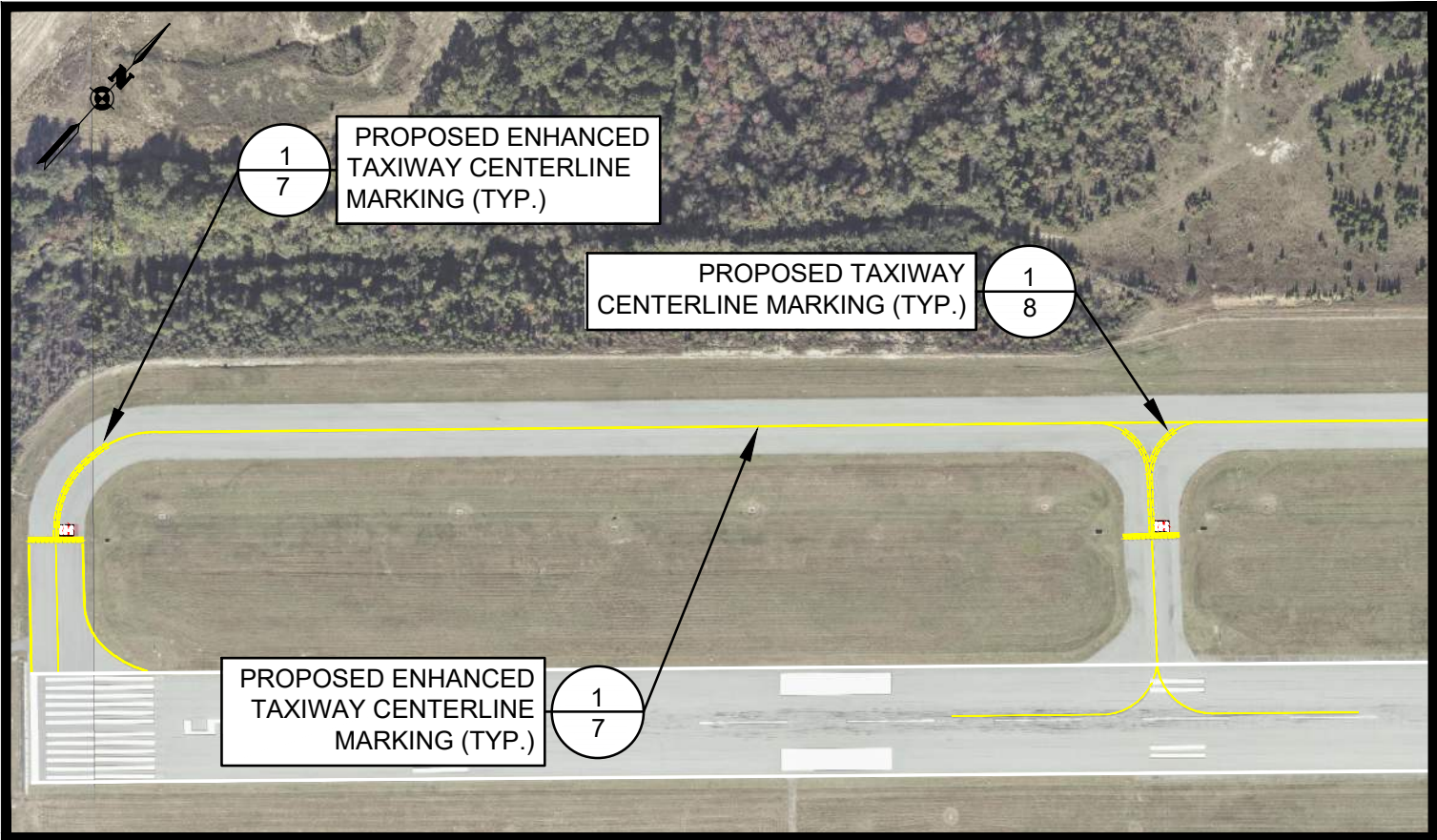
Owner: MACON-BIBB COUNTY
 700 POPLAR STREET
 MACON, GEORGIA 31201
 (478) 751-7400

Project No.:

Drawing No.: **4/9**

Scale: **N.T.S.**

Date: **June 2022**




Middle Georgia Regional Airport
 1000 Terminal Drive Suite 100
 Macon, Georgia 31216
 (478) 219-1138
 www.iflymacon.com

Project: **AIRPORT MARKING**

Drawing:

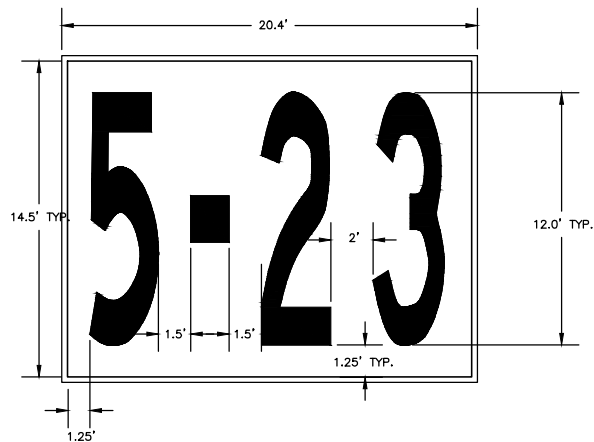
Owner: MACON-BIBB COUNTY
 700 POPLAR STREET
 MACON, GEORGIA 31201
 (478) 751-7400

Project No.:

Drawing No.: **5/9**

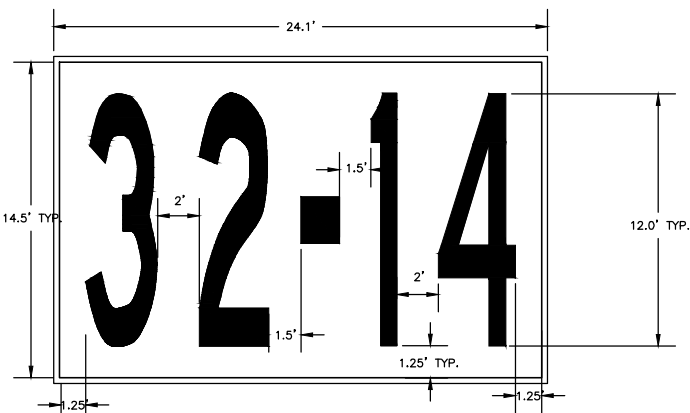
Scale: **N.T.S.**

Date: **June 2022**



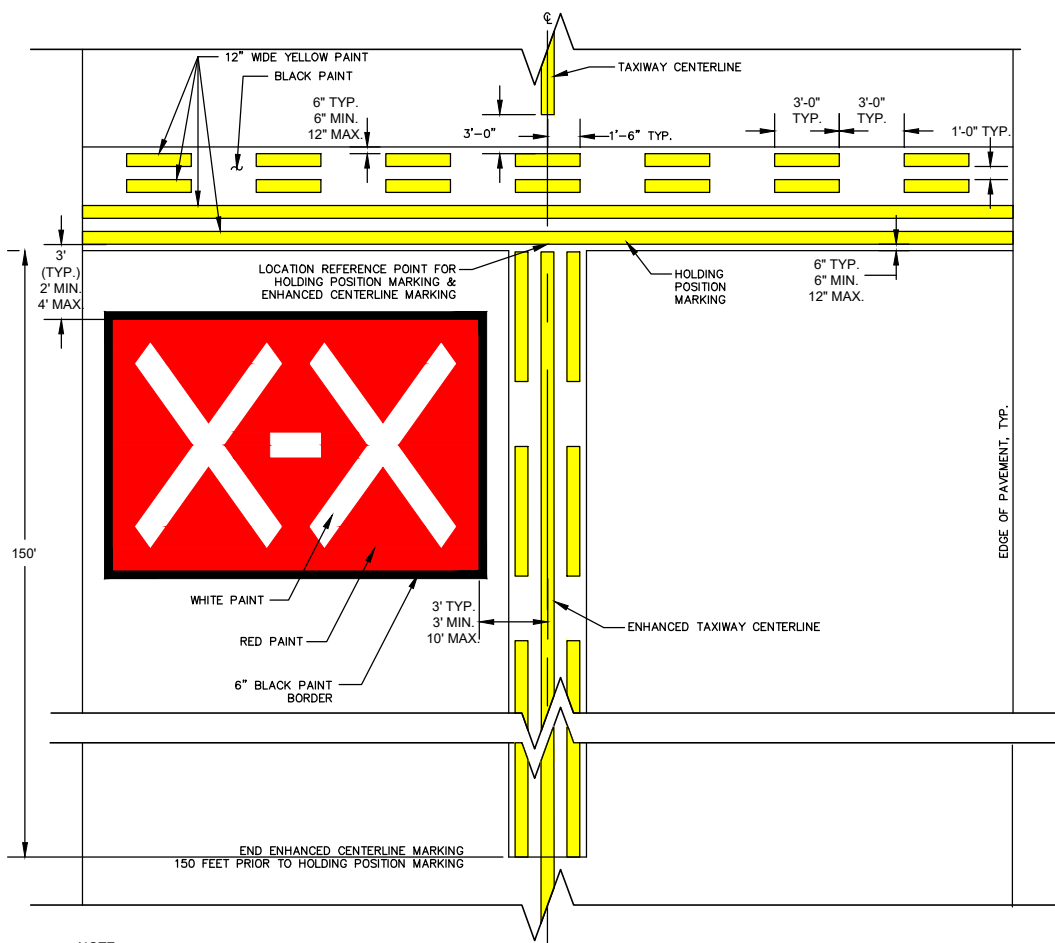
NOTE:
1. THE SIGNS CONSIST OF WHITE CHARACTERS ON A RED BACKGROUND WITH A 6" BLACK BORDER.

1
6 SURFACE PAINTED HOLDING POSITION SIGN (SPHPS) DIMENSIONS DETAIL



NOTE:
1. THE SIGNS CONSIST OF WHITE CHARACTERS ON A RED BACKGROUND WITH A 6" BLACK BORDER.

2
6 SURFACE PAINTED HOLDING POSITION SIGN (SPHPS) DIMENSIONS DETAIL



NOTE:
1. SEE ENHANCED TAXIWAY CENTERLINE MARKING DETAILS FOR FURTHER INFORMATION.
2. SEE SURFACE PAINTED HOLDING POSITION SIGN DETAILS FOR FURTHER INFORMATION.

3
6 TYPICAL HOLDING POSITION MARKING & SURFACE PAINTED HOLDING POSITION SIGN FOR TW WIDTH > 35' (CASE 1)

N.T.S.



Middle Georgia Regional Airport
1000 Terminal Drive Suite 100
Macon, Georgia 31216
(478) 219-1138
www.iflymacon.com

Project:

AIRPORT MARKING

Drawing:

Owner: MACON-BIBB COUNTY
700 POPLAR STREET
MACON, GEORGIA 31201
(478) 751-7400

Project No.:

Drawing No.:

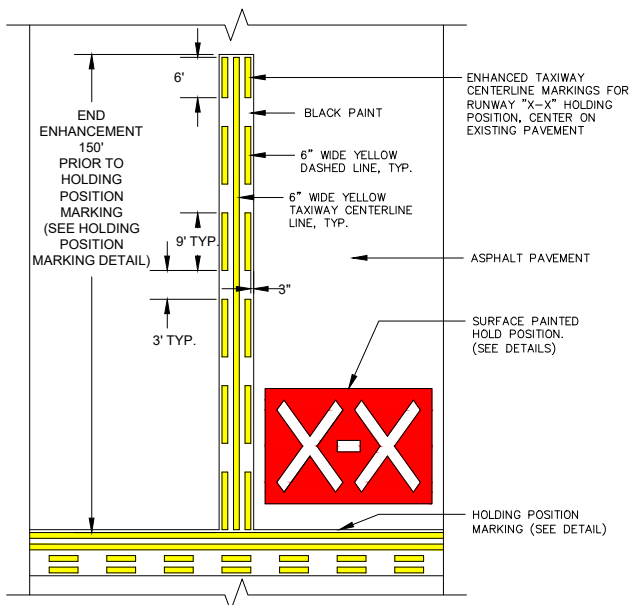
6/9

Scale:

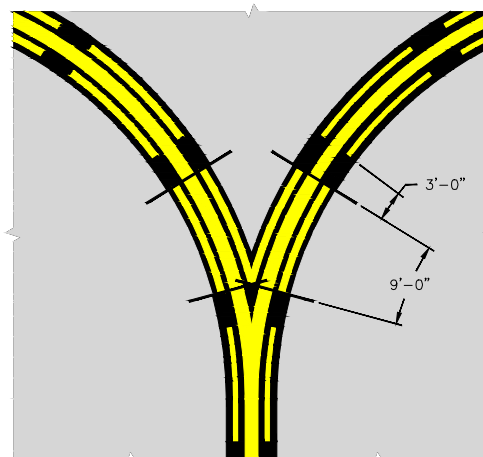
N.T.S.

Date:

June 2022



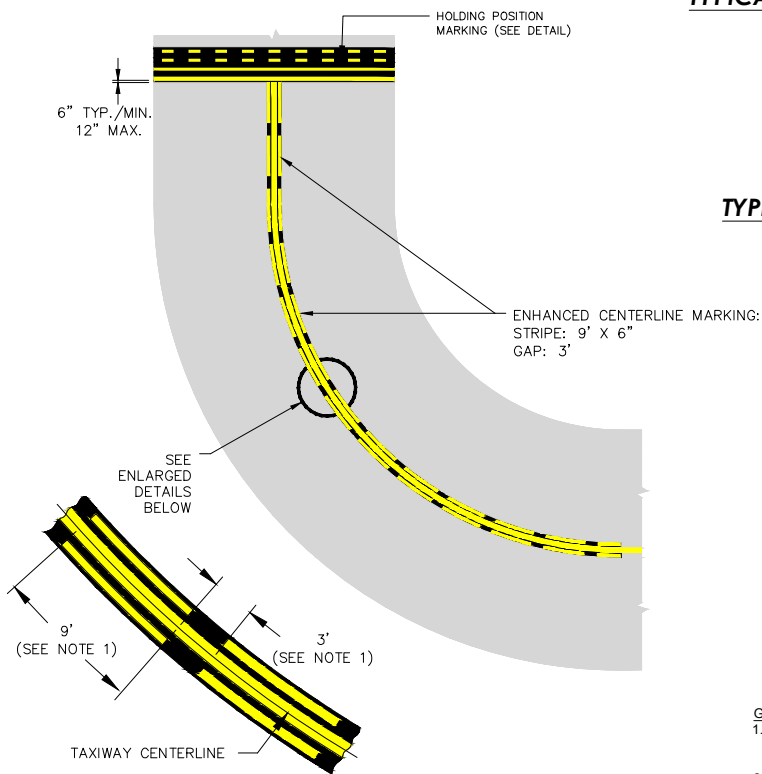
TYPICAL ENHANCED CENTERLINE ON STRAIGHT TAXIWAY SECTION



CONVERGING TAXIWAY NOTES:

1. AS SHOWN IN THE ABOVE ILLUSTRATION THE V-SHAPED DASHES START & STOP WITH THE OUTSIDE 9-FOOT DASHES; HOWEVER, THIS WILL NOT ALWAYS BE THE CASE. IF THE V-SHAPED DASHES ARE LESS THAN 5 FEET THEY MAY BE OMITTED.
2. MEASUREMENTS ARE TAKEN ALONG THE CENTER OF THE CENTERLINE STRIPE.

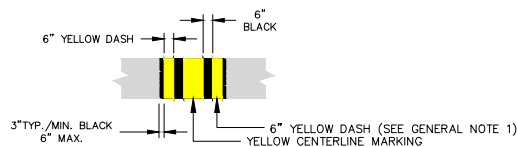
TYPICAL CONVERGING CURVED TAXIWAY ENHANCED CENTERLINES



CURVED SECTION NOTE:

1. THE DASHED LINES DIMENSIONS ARE TAKEN ALONG THE CENTER OF THE CENTERLINE ON CURVED SECTIONS, THEREFORE THE DASH WILL BE SLIGHTLY LONGER ON THE OUTSIDE OF THE CURVE AND SLIGHTLY SHORTER ON THE INSIDE OF THE CURVE.

TYPICAL ENHANCED CENTERLINE ON CURVED TAXIWAY SECTION



TYPICAL ENHANCED CENTERLINE MARKING STRIPE SPACING

GENERAL NOTES:

1. DASHED LINES FOR THE ENHANCED TAXIWAY CENTERLINE MARKING ARE 6 INCHES IN WIDTH AND SEPARATED 6 INCHES FROM THE TAXIWAY CENTERLINE. THIS APPLIES TO BOTH TAXIWAY CENTERLINE MARKINGS THAT ARE 6 INCHES AND 12 INCHES.
2. TAXIWAY CENTERLINES SHALL BE ENHANCED FOR 150 FEET PRIOR TO THE HOLDING POSITION MARKING. THE STANDARD APPLICATION (CASE 1) FOR STRAIGHT AND CURVED TAXIWAY SECTIONS INCLUDES 12 SETS OF 9-FOOT DASHES PLUS 3-FOOT GAP & ENDS WITH A SET OF 6-FOOT DASHES. IN CASE 2 APPLICATIONS WHERE THE SURFACE PAINTED HOLDING POSITION SIGN IS CENTERED OVER THE TAXIWAY CENTERLINE, THE ENHANCED TAXIWAY CENTERLINE MARKING WILL BE LESS THAN 150' SINCE IT DOES NOT BEGIN AT HOLDING POSITION MARKING. SEE HOLDING POSITION MARKING AND SURFACE PAINTED HOLDING POSITION SIGN DETAILS FOR ILLUSTRATION OF CASE 1 AND CASE 2 APPLICATIONS.
3. THE TAXIWAY CENTERLINE MARKINGS MAY BE SHIFTED LEFT OR RIGHT TO AVOID INTERFERENCE WITH TAXIWAY CENTERLINE LIGHTS.

1 ENHANCED TAXIWAY CENTERLINE MARKING DETAILS
7
N.T.S.



Middle Georgia Regional Airport
1000 Terminal Drive Suite 100
Macon, Georgia 31216
(478) 219-1138
www.iflymacon.com

Project:

AIRPORT MARKING

Drawing:

Owner: MACON-BIBB COUNTY
700 POPLAR STREET
MACON, GEORGIA 31201
(478) 751-7400

Project No.:

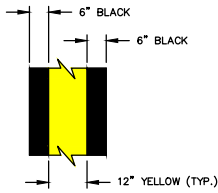
Drawing No.:
7/9

Scale:

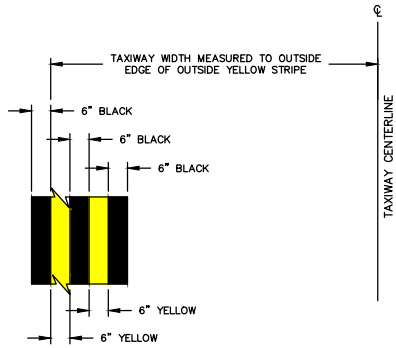
N.T.S.

Date:

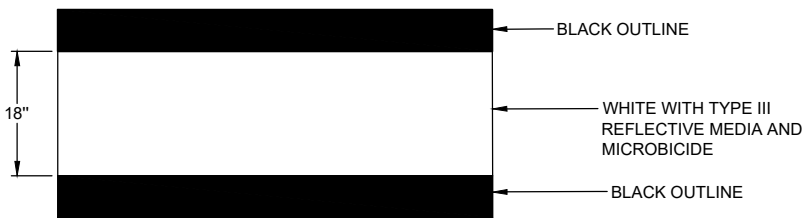
June 2022



1 STANDARD TAXIWAY CENTERLINE MARKING DETAIL
8 N.T.S.



2 STANDARD TAXIWAY EDGE MARKING DETAIL
8 N.T.S.



3 RUNWAY 5-23 EDGE MARKING DETAIL
8 N.T.S.



Middle Georgia Regional Airport
1000 Terminal Drive Suite 100
Macon, Georgia 31216
(478) 219-1138
www.iflymacon.com

Project:

AIRPORT MARKING

Drawing:

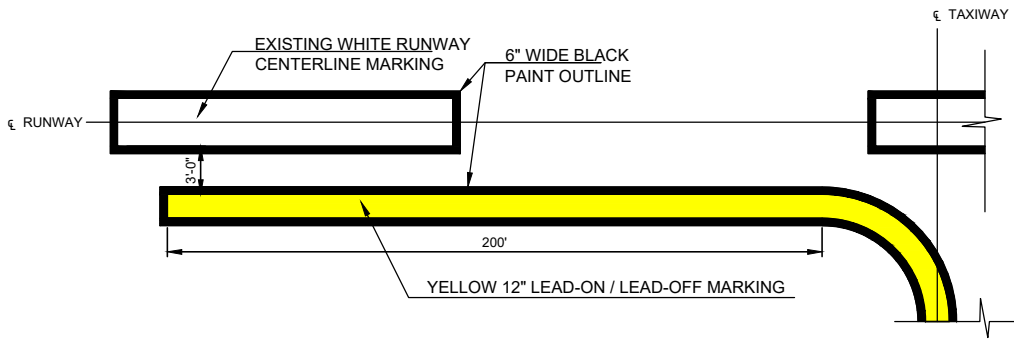
Owner: MACON-BIBB COUNTY
700 POPLAR STREET
MACON, GEORGIA 31201
(478) 751-7400

Project No.:

Drawing No.:
8/9

Scale:
N.T.S.

Date:
June 2022



1 TAXIWAY LEAD-ON/LEAD-OFF MARKING
 9 N.T.S.



Middle Georgia Regional Airport
 1000 Terminal Drive Suite 100
 Macon, Georgia 31216
 (478) 219-1138
 www.iflymacon.com

Project:

AIRPORT MARKING

Drawing:

Owner: MACON-BIBB COUNTY
 700 POPLAR STREET
 MACON, GEORGIA 31201
 (478) 751-7400

Project No.:

Drawing No.:
 9/9

Scale:
 N.T.S.

Date:
 June 2022