




Macon-Bibb County Guardrail Information										7	
Location:	Rivoli Drive, near 215 Abington Ct.										
	Demo rail:		Demo Post:		End Anchor:						
	Length of new rail:	234	Post at:	6.5	Curved Rail:		Radius:				
	Straighten rail:				Reset Posts:		Blocks:				
	New Posts:				Type 12A Anchor:	1	End Piece:	1			
	New Absorber end:										
	Mobilization:	1,500	LS								
	Misc Cost:		LS								
	Reflectors Needed:		(Y/N)								
Statement of Needs New rail needed. Total length = 312'. Install by GDOT specs. 53' of Type 12A anchorage, 234' of W Beam, 25' of Type 1 Anchorage.											
Comments:											
COST:											
Macon-Bibb County Guardrail Information										8	
Location:	7761 Nowell Road South, at curve.										
	Demo rail:		Demo Post:		End Anchor:						
	Length of new rail:	234	Post at:		Curved Rail:		Radius:				
	Straighten rail:				Reset Posts:		Blocks:				
	New Posts:				Type 12A Anchor:	1	Type 1	1			
	New Absorber end:										
	Mobilization:	1,500	LS								
	Misc Cost:		LS								
	Reflectors Needed:		(Y/N)								
Statement of Needs Sharp curve. New rail needed. Total length = 312'. Install by GDOT specs. 53' of Type 12A anchorage, 234' of W Beam, 25' of Type 1 Anchorage.											
Comments:											
COST:											
Macon-Bibb County Guardrail Information										9	
Location:	Log Cabin Rd Bridge over Rocky Creek										
	Demo rail:		Demo Post:		End Anchor:						
	Length of new rail:	24	Post at:		Curved Rail:		Radius:				
	Straighten rail:				Reset Posts:		Blocks:				
	New Posts:				Type 12A Anchor:		Type 1				
	New Absorber end:										
	Mobilization:	1,500	LS								
	Misc Cost:	26,000	LS								
	Reflectors Needed:		(Y/N)								
Statement of Needs Non-Typical. Replace two (2) sections of concrete bridge railing. Repair the concrete post and form back in place. Each section is approximately 10 feet long. Spreadsheet calculates metal beam. Increase Misc Cost for concrete and complexity. Flamingo requirement.											
Comments:											
COST:											

Macon-Bibb County Guardrail Information										10
Location:	1935 Forest Hill Road									
	Demo rail:		Demo Post:		End Anchor:					
	Length of new rail:	423	Post at:	6.5	Curved Rail:		Radius:			
	Straighten rail:				Reset Posts:		Blocks:			
	New Posts:				Type 12A Anchor:	1	Type 1	1		
	New Absorber end:									
	Mobilization:	1,500	LS							
	Misc Cost:		LS							
	Reflectors Needed:		(Y/N)							
Statement of Needs										
New rail needed. Total length = 501'. 53' of Type 12A anchorage, 423' of W beam, 25' of Type 1 anchorage.										
Comments:										
	COST:									
Macon-Bibb County Guardrail Information										11
Location:	Arkwright Rd in curve north of Arkwright Drive									
	Demo rail:		Demo Post:		End Anchor:					
	Length of new rail:	677	Post at:	6.5	Curved Rail:		Radius:			
	Straighten rail:				Reset Posts:		Blocks:			
	New Posts:				Type 12A Anchor:	2	Type 1	2		
	New Absorber end:									
	Mobilization:	1,500	LS							
	Misc Cost:	2,000	LS							
	Reflectors Needed:		(Y/N)							
Statement of Needs										
New rail around northside of curve near R/R tracks. Two W beam rail runs needed, with Type 12A and Type 1 ends, each. Leave the RR access road open, between. W Beam sections to be 462' and 215', respectively. Flagging required.										
Comments:										
	COST:									
Macon-Bibb County Guardrail Information										12
Location:	4804 Rivoli Drive, at Wesleyan Drive									
	Demo rail:	52	Demo Post:		End Anchor:					
	Length of new rail:	52	Post at:	6.5	Curved Rail:		Radius:			
	Straighten rail:				Reset Posts:	2	Blocks:			
	New Posts:				Type 12A Anchor:		Type 1			
	New Absorber end:									
	Mobilization:	1,500	LS							
	Misc Cost:	2,000	LS							
	Reflectors Needed:		(Y/N)							
Statement of Needs										
Replace 52' (two 26' long sections) of W Beam guard rail, with posts and blocks. Straighten two posts just west of the west end of the replaced 52' of W rail. Flagging required.										
Comments:										
	COST:									



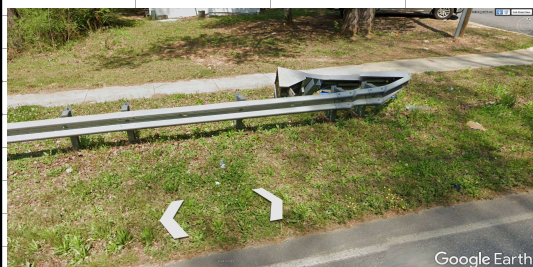
Macon-Bibb County Guardrail Information						13
Location:	1200 Tucker Road, at Rocky Creek bridge					
	Demo rail:		Demo Post:	End Anchor:		
	Length of new rail:		Post at:	Curved Rail:	Radius:	
	Straighten rail:	6		Reset Posts:	6	Blocks:
	New Posts:	4		Type 12A Anchor:		Type 1
	New Absorber end:					
	Mobilization:	1,500	LS			
	Misc Cost:	26,000	LS			
	Reflectors Needed:		(Y/N)			
Statement of Needs						
Non-Typical. Remove and replace 3 concrete rail sections and posts of concrete bridge railing. Repair Bridge Abutment. May need an Under Bridge Platform. Each section approximately 10' long. Flagging required.						
Comments:						
	COST:					




Macon-Bibb County Guardrail Information						14
Location:	Tucker Rd over Rocky Creek, SW Quad					
	Demo rail:	52	Demo Post:	End Anchor:		
	Length of new rail:	52	Post at:	Curved Rail:	Radius:	
	Straighten rail:			Reset Posts:	10	Blocks:
	New Posts:	4		Type 12A Anchor:		Type 1
	New Absorber end:					
	Mobilization:	2,000	LS			
	Misc Cost:	2,000	LS			
	Reflectors Needed:		(Y/N)			
Statement of Needs						
Remove and replace two sections of damaged W Beam rail and tie back into bridge abutment. Straighten posts and reuse. Flagging required.						
Comments:						
	COST:					



Macon-Bibb County Guardrail Information						15
Location:	Log Cabin Dr at Rocky Creek, NW Quad					
	Demo rail:	12	Demo Post:	3	End Anchor:	
	Length of new rail:	12	Post at:		Curved Rail:	Radius:
	Straighten rail:				Reset Posts:	4
	New Posts:				Type 12A Anchor:	Type 1
	New Absorber end:					
	Mobilization:	2000	LS			
	Misc Cost:		LS			
	Reflectors Needed:		(Y/N)			
Statement of Needs						
Remove and replace 12' of damaged W Beam rail. Add a Type 12A end piece, not full length.						
Comments:						
	COST:					



Macon-Bibb County Guardrail Information						16	
Location:	2820 Pineworth Road, at Lake						
	Demo rail:		Demo Post:	End Anchor:			
	Length of new rail:	252	Post at:	Curved Rail:	Radius:		
	Straighten rail:			Reset Posts:	Blocks:		
	New Posts:			Type 12A Anchor:	1	Type 1	1
	New Absorber end:						
	Mobilization:	2000	LS				
	Misc Cost:	2,000	LS				
	Reflectors Needed:		(Y/N)				
Statement of Needs							
<i>Install 252' of W Beam rail, with a Type 12A end piece and a Type 1 end piece. Flagging required (narrow road shoulder, by the lake).</i>							
Comments:							
	COST:						