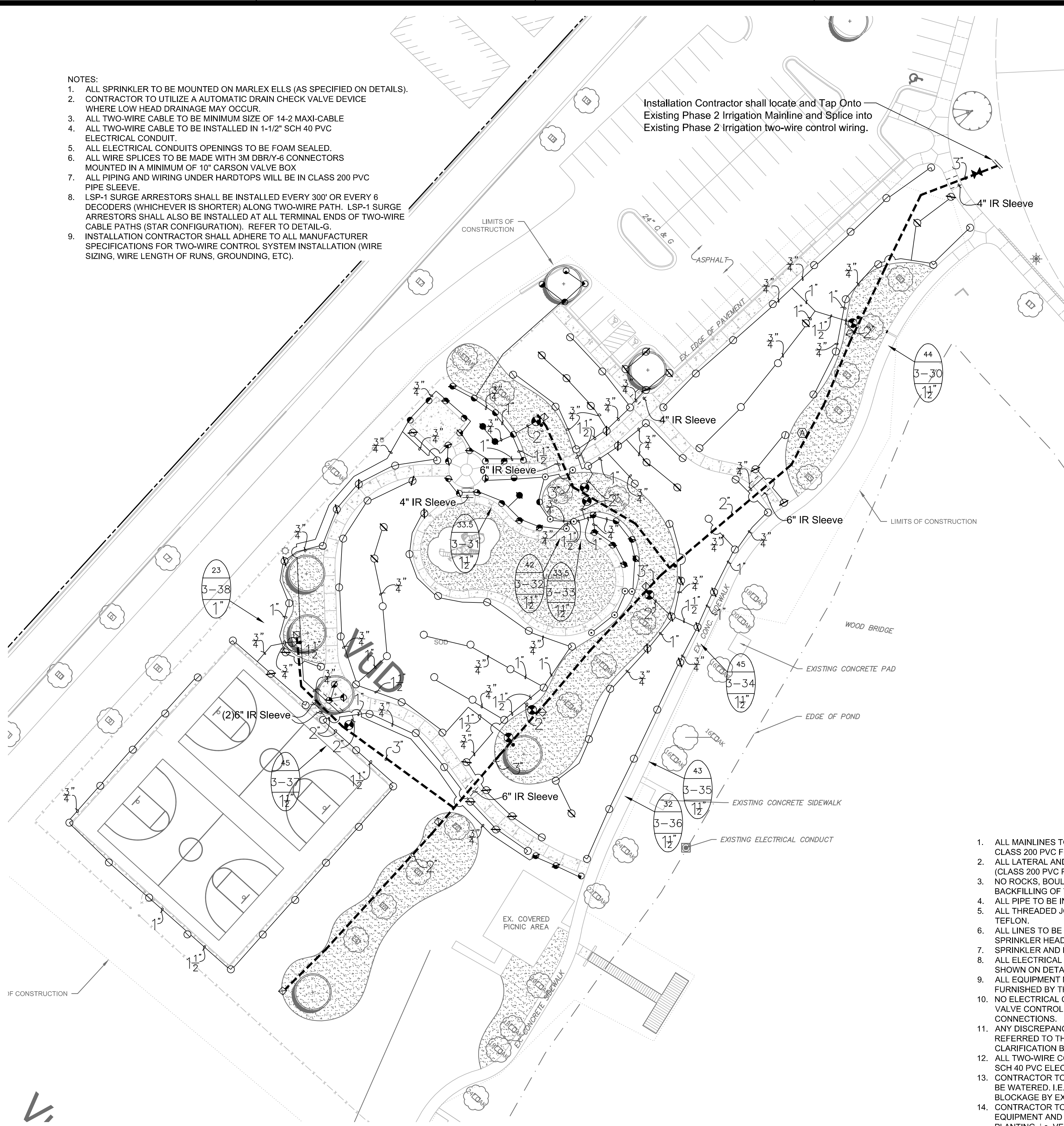


NOTES:

1. ALL SPRINKLER TO BE MOUNTED ON MARLEX ELLS (AS SPECIFIED ON DETAILS).
2. CONTRACTOR TO UTILIZE A AUTOMATIC DRAIN CHECK VALVE DEVICE WHERE LOW HEAD DRAINAGE MAY OCCUR.
3. ALL TWO-WIRE CABLE TO BE MINIMUM SIZE OF 14-2 MAXI-CABLE
4. ALL TWO-WIRE CABLE TO BE INSTALLED IN 1-1/2" SCH 40 PVC ELECTRICAL CONDUIT.
5. ALL ELECTRICAL CONDUITS OPENINGS TO BE FOAM SEALED.
6. ALL WIRE SPLICES TO BE MADE WITH 3M DBRY-6 CONNECTORS MOUNTED IN A MINIMUM OF 10" CARSON VALVE BOX
7. ALL PIPING AND WIRING UNDER HARDTOPS WILL BE IN CLASS 200 PVC PIPE SLEEVE.
8. LSP-1 SURGE ARRESTORS SHALL BE INSTALLED EVERY 300' OR EVERY 6 DECODERS (WHICHEVER IS SHORTER) ALONG TWO-WIRE PATH. LSP-1 SURGE ARRESTORS SHALL ALSO BE INSTALLED AT ALL TERMINAL ENDS OF TWO-WIRE CABLE PATHS (STAR CONFIGURATION). REFER TO DETAIL-G.
9. INSTALLATION CONTRACTOR SHALL ADHERE TO ALL MANUFACTURER SPECIFICATIONS FOR TWO-WIRE CONTROL SYSTEM INSTALLATION (WIRE SIZING, WIRE LENGTH OF RUNS, GROUNDING, ETC).

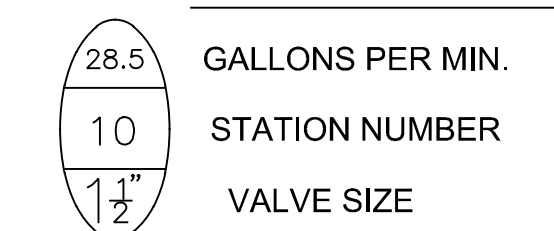
Installation Contractor shall locate and Tap Onto Existing Phase 2 Irrigation Mainline and Splice into Existing Phase 2 Irrigation two-wire control wiring.



IRRIGATION LEGEND

- IRRIGATION POINT OF CONNECTION TO EXISTING IRRIGATION MAINLINE AND TWO-WIRE CONTROL WIRE PATH. REFER TO NOTES ON PLANS.
- MANUAL DRAIN VALVE. 2" SCH 80 PVC TRUE UNION BALL VALVE. DETAIL-E.
- ⊕ RAIN BIRD 150-EFB-CP-PRS BRASS ELECTRIC REMOTE CONTROL VALVE, 11/2" SIZE, MOUNTED WITH BRASS FULL PORT BALL VALVE WITH PRESSURE REGULATION DEVICES, MOUNTED WITH RAIN BIRD SINGLE STATION DECODER (FD-101TURF). DETAIL-A.
- ⊕ RAIN BIRD 100-EFB-CP-PRS BRASS ELECTRIC REMOTE CONTROL VALVE, 1" SIZE, MOUNTED WITH BRASS FULL PORT BALL VALVE WITH PRESSURE REGULATION DEVICES, MOUNTED WITH RAIN BIRD SINGLE STATION DECODER (FD-101TURF). DETAIL-A.
- ⊙ RAIN BIRD 1806-SAM, 6" POP-UP LAWN SPRAY SPRINKLER, 12" RADIUS, FULL-2.0 GPM, HALF-1.0 GPM, QUARTER-0.5 GPM, 30 PSI. DETAIL-B.
- ⊙ RAIN BIRD 1806-SAM, 6" POP-UP LAWN SPRAY SPRINKLER, 15" RADIUS, FULL-4.0 GPM, HALF-2.0 GPM, QUARTER-1.0 GPM, 30 PSI. DETAIL-B.
- ⊙ RAIN BIRD 1806-SAM, 6" LAWN POP-UP SIDE STRIP SPRAY SPRINKLER, 9' X 18' RADIUS, 1.5 GPM, 30 PSI. DETAIL-B.
- ⊙ RAIN BIRD 1806-SAM, 6" LAWN SIDE STRIP SPRAY SPRINKLER, 4' X 30' RADIUS, 1.5 GPM, 30 PSI. DETAIL-B.
- ⊙ RAIN BIRD 1806-SAM, 6" LAWN END STRIP SPRAY SPRINKLER, 4' X 15' RADIUS, 1.0 GPM, 30 PSI. DETAIL-B.
- RAIN BIRD #5 QUICK COUPLING VALVE 1" SIZE. CONTRACTOR TO SUPPLY TWO QCV KEYS AND MATCHING HOSE SWIVELS. DETAIL-C.
- ⊕ MAINLINE ISOLATION GATE VALVE, DOMESTIC DUCTILE IRON GASKETED, DETAIL-H.
- ⊕ AIR VENT VALVE, BERMAID #4420, 2" SIZE. DETAIL-D.
- MAINLINE PIPE: 3" SIZE IF NOT NOTED. CLASS 200 PVC. ALL PIPE 2-1/2" AND LARGER SHALL BE UNIBELL GASKETED PVC PIPE AND HARCO PVC GASKETED FITTINGS. THRUST BLOCKS AND HARCO DUCTILE IRON RESTRAINTS TO BE UTILIZED AS PER MANUFACTURER'S RECOMMENDATIONS FOR PIPE TYPE, PIPE SIZE, AND LOCAL ENVIRONMENTAL CONDITIONS.
- NOTE: 1-1/2" SCH 40 PVC ELECTRICAL CONDUIT FOR CONTROL WIRING WILL BE INSTALLED IN ALL MAINLINE TRENCHLINES.
- LATERAL LINE PIPE: CLASS 200 PVC SOLVENT WELD PIPE UTILIZING SCH 40 PVC SOLVENT WELD FITTINGS. SIZE NOTED.
- IRRIGATION SLEEVE, CLASS 200 PVC PIPE, SIZE NOTED ON PLANS. DETAIL-K.
- RAIN BIRD LSP-1 TWO-WIRE SURGE ARRESTOR. INSTALLED A MINIMUM OF EVERY 300' OR EVER 6 DECODERS, WHICHEVER IS SHORTER. DETAIL-G.

TYPICAL VALVE INDICATOR



GENERAL NOTES

1. ALL MAINLINES TO HAVE A MINIMUM OF 18" OF COVER. (CLASS 200 PVC PIPE, CLASS 200 PVC FOR 4" AND LARGER).
2. ALL LATERAL AND SUB-MAIN PIPE TO HAVE A MINIMUM OF 12" OF COVER. (CLASS 200 PVC PIPE)
3. NO ROCKS, BOULDER, OR OTHER EXTRANEIOUS MATERIALS TO BE USED IN BACKFILLING OF TRENCH.
4. ALL PIPE TO BE INSTALLED AS PER MANUFACTURERS' SPECIFICATIONS.
5. ALL THREADED JOINTS TO BE COATED WITH TEFLON TAPE OR LIQUID TEFLON.
6. ALL LINES TO BE THOROUGHLY FLUSHED BEFORE INSTALLATION OF SPRINKLER HEADS.
7. SPRINKLER AND RELATED EQUIPMENT TO BE INSTALLED AS PER DETAILS.
8. ALL ELECTRICAL JOINTS TO BE MADE USING WATERPROOF CONNECTIONS AS SHOWN ON DETAILS.
9. ALL EQUIPMENT NOT SPECIFIED IN THE LEGEND SHALL BE DETERMINED AND FURNISHED BY THE CONTRACTOR.
10. NO ELECTRICAL CONNECTIONS SHALL BE MADE IN THE FIELD EXCEPT AT A VALVE CONTROL BOX OR ANOTHER VALVE BOX SPECIFICALLY FOR CONNECTIONS.
11. ANY DISCREPANCY BETWEEN THIS SHEET AND OTHERS IN THIS SET MUST BE REFERRED TO THE IRRIGATION CONSULTANT BY THE CONTRACTOR FOR CLARIFICATION BEFORE PRECEEDING WITH THE WORK.
12. ALL TWO-WIRE CONTROL WIRES SHALL BE #14-2 MAXI CABLE, INSTALLED IN 1" SCH 40 PVC ELECTRICAL CONDUIT.
13. CONTRACTOR TO BE RESPONSIBLE FOR PROPER COVERAGE OF AREAS TO BE WATERED, I.E. ADJUST HEADS WITH INSUFFICIENT COVERAGE DUE TO BLOCKAGE BY EXISTING OR PROPOSED SITE FEATURES.
14. CONTRACTOR TO REFER TO LANDSCAPE PLAN TO KEEP SPRINKLER EQUIPMENT AND ACCESSORY MATERIAL FROM INTERFERING WITH PROPER PLANTING, I.E. VERIFY ROOT BALL SIZE FOR PLANTING.
15. CONTRACTOR SHALL PROVIDE EXPANSION COILS AT EACH WIRE CONNECTION IN VALVE BOX (WRAP AROUND 3/4" PIPE 12 TIMES).
16. CONTRACTOR TO UTILIZE APPROPRIATE AUTOMATIC DRAIN DEVICE WHERE LOW HEAD DRAINAGE MAY OCCUR.
17. ALL SPRINKLERS TO BE INSTALLED AS DETAILED ON PLANS.
18. CONTRACTOR SHALL UTILIZE VALVE I.D. TAGS ON ALL REMOTE CONTROL VALVES.
19. CONTOL WIRE SHALL BE COLOR CODED PER SEPARATE WIRE RUNS.
20. CONTRACTOR SHALL INSTALL MANUFACTURERS' RECOMMENDED GROUNDING EQUIPMENT FOR POWER SUPPLY AND VALVE OUTPUT WITH PAIGE WIRE GROUND PLATE ASSEMBLY.
21. CONTRACTOR SHALL INSTALL MANUFACTURERS' RECOMMENDATION ON FAULT GROUND AND LIGHTNING PROTECTION.
22. CONTROLLER GROUNDING MUST BE AS PER PAIGE WIRE GROUNDING REQUIREMENTS
23. ALL MATERIAL TO BE SUPPLIED BY CONTRACTOR TO OWNER:
 - A. TWO WRENCHES FOR DISASSEMBLING AND ADJUSTING EACH TYPE OF SPRINKLER HEADS AND VALVE SUPPLIED.
 - B. TWO KEYS FOR EACH OF THE AUTOMATIC CONTROLLERS.
 - C. TWO QUICK COUPLER KEYS WITH MATCHING HOSE SWIVELS.
24. SYSTEM IS DIAGRAMMATIC TO IMPROVE CLARITY. ALL MAINLINE PIPING ELECTRIC VALVES AND WIRING ARE TO BE INSTALLED IN LANDSCAPE AREAS AND WITHIN PROPERTY BOUNDARIES. CONTRACTOR SHALL REFERENCE THE LANDSCAPE PLAN PRIOR TO THE INSTALLATION OF PIPING TO AVOID CONTACT WITH PLANT MATERIALS EXISTING OR NEW.
25. CONTRACTOR TO ADD EXTENSION RISER TO POP-UP HEADS WHEN NEEDED FOR PROPER COVERAGE.
26. CONTRACTOR SHALL INSTALL SPRINKLER EQUIPMENT 12" FROM FOUNDATIONS. ALSO INSTALL SPRINKLERS 4" FROM CURB OR WALKS.
27. PRIOR TO BID IRRIGATION CONTRACTOR SHALL VERIFY RIGHT-OF-WAY AND BACKFLOW REQUIREMENTS. NO LATER THAN FIVE DAYS BEFORE BID SUBMITTALS CONTRACTOR SHALL NOTIFY CONSULTANT OF ANY CHANGES FROM PLANS AND SPECIFICATIONS.
28. IRRIGATION CONTRACTOR SHALL PROVIDE THE OWNER AND LANDSCAPE ARCHITECT WITH A REPRODUCIBLE CROSS MEASURED AS-BUILT DRAWING OF THE INSTALLED IRRIGATION SYSTEM IN AUTOCAD 2010 FORMAT BEFORE FINAL ACCEPTANCE.
29. A 1-YEAR WARRANTY PERIOD SHALL BE PROVIDED FOR SYSTEM AFTER SUBSTANTIAL COMPLETION IS ACCEPTED. START UP AND ADJUSTING OF SYSTEM IN SPRING TIME SHALL BE INCLUDED IN WARRANTY.
30. PRIOR TO BID, CONTRACTOR SHALL VERIFY THAT ALL MATERIALS, INSTALLATION PARAMETERS AND OPERATIONS CONFORM TO ALL APPLICABLE CODES AND ORDINANCES. NO LATER THAN FIVE DAYS BEFORE BID SUBMITTALS CONTRACTOR SHALL NOTIFY IRRIGATION CONSULTANT/DESIGNER OF ANY CHANGES REQUIRED DUE TO CURRENT CODE OR ORDINANCE DISCREPANCIES. IF CONTRACTOR DOES NOT COMPLY TO THIS NOTIFICATION, THE CONTRACTOR SHALL BE RESPONSIBLE FOR ALL NECESSARY INSTALLATION CHANGE AND REDESIGN COSTS FOR NON-COMPLIANCE.
31. UNLESS OTHERWISE NOTED, THE CONTRACTOR MUST COMPLETE 2 PRESSURE TESTS OF THE IRRIGATION SYSTEM MAINLINE (BOTH TO SHOW NO DROP IN PRESSURE DURING DURATION OF TEST.
 - A. 2-HOUR PRESSURE TEST AT 1.5 TIMES THE SYSTEM STATIC PRESSURE
 - B. 24-HOUR PRESSURE TEST AT THE SYSTEM STATIC PRESSURE
32. IRRIGATION INSTALLATION CONTRACTOR SHALL PROVIDE OWNER WITH A COLOR-CODED ZONES DIAGRAM PLAN, 8-1/2"X11" LAMINATED SHEET(S), TO IDENTIFY CONTROLLER STATION TO THE CONTROL VALVE NUMBER FOR EACH CONTROLLER. TO BE LOCATED IN ADHESIVE POUCH ATTACHED INSIDE OF CONTROLLER(S).

GEORGIA811
 Utilities Protection Center, Inc.
 1-800-282-7411
 Know what's below.
 Call before you dig.

NO.	DATE	DESCRIPTION	BY
1			
2			
3			
4			
5			

4317 Park Drive, Suite 400
 Norcross, Georgia 30093
 Phone: (770)416-7511
 Fax: (770)416-6759
 www.travispruitt.com
 Contact Person:

Travis Pruitt & Associates, Inc.
 IRRIGATION • LANDSCAPE ARCHITECTURE •

IRRIGATION PLAN

FREEDOM PARK PHASE 3

MACON, GEORGIA

For The Firm
 Travis Pruitt & Associates, Inc.
 DATE: 02/14/2020
 SCALE: AS NOTED
 CN:
 JN:
 FN:

IR.01