

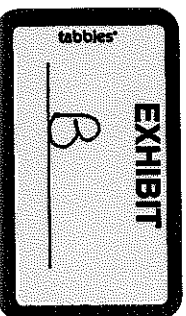
Table of Contents

| Title | Page Number |
|----------------------------------|-------------|
| Summary | A |
| County Manager | 1 |
| Mayor and Board of Commissioners | 2 |
| Budget and Strategic Planning | 3 |
| Public Affairs | 4 |
| Finance | 5 |
| Parks and Beautification | 6 |
| Attorney | 7 |
| E-911 | 8 |
| Purchasing | 9 |
| Internal Auditor | 10 |
| EMA | 11 |
| Clerk to the Commission | 12 |
| Municipal Court | 13 |
| Vehicle Maintenance | 14 |
| Information Technology | 15 |
| Facilities Management | 16 |
| Recreation | 17 |
| Engineer | 18 |
| Airport | 19 |
| Animal Welfare | 20 |
| Fire | 21 |
| Public Works | 22 |
| Solid Waste | 23 |
| Business Development Services | 24 |
| Small Business Affairs | 25 |
| Constitutional Officers | 25A |
| Board of Election | 26 |
| Coroner | 27 |
| Civil Court | 28 |
| Clerk of Superior Court | 29 |
| District Attorney | 30 |
| Juvenile Court | 31 |
| Law Library | 32 |
| Probate Court | 33 |
| Public Defenders Office | 34 |
| Sheriff | 35 |
| Solicitor General | 36 |
| State Court | 37 |
| Superior Court | 38 |
| Tax Assessor | 39 |
| Tax Commission | 40 |
| Cooperative Extension | 41 |

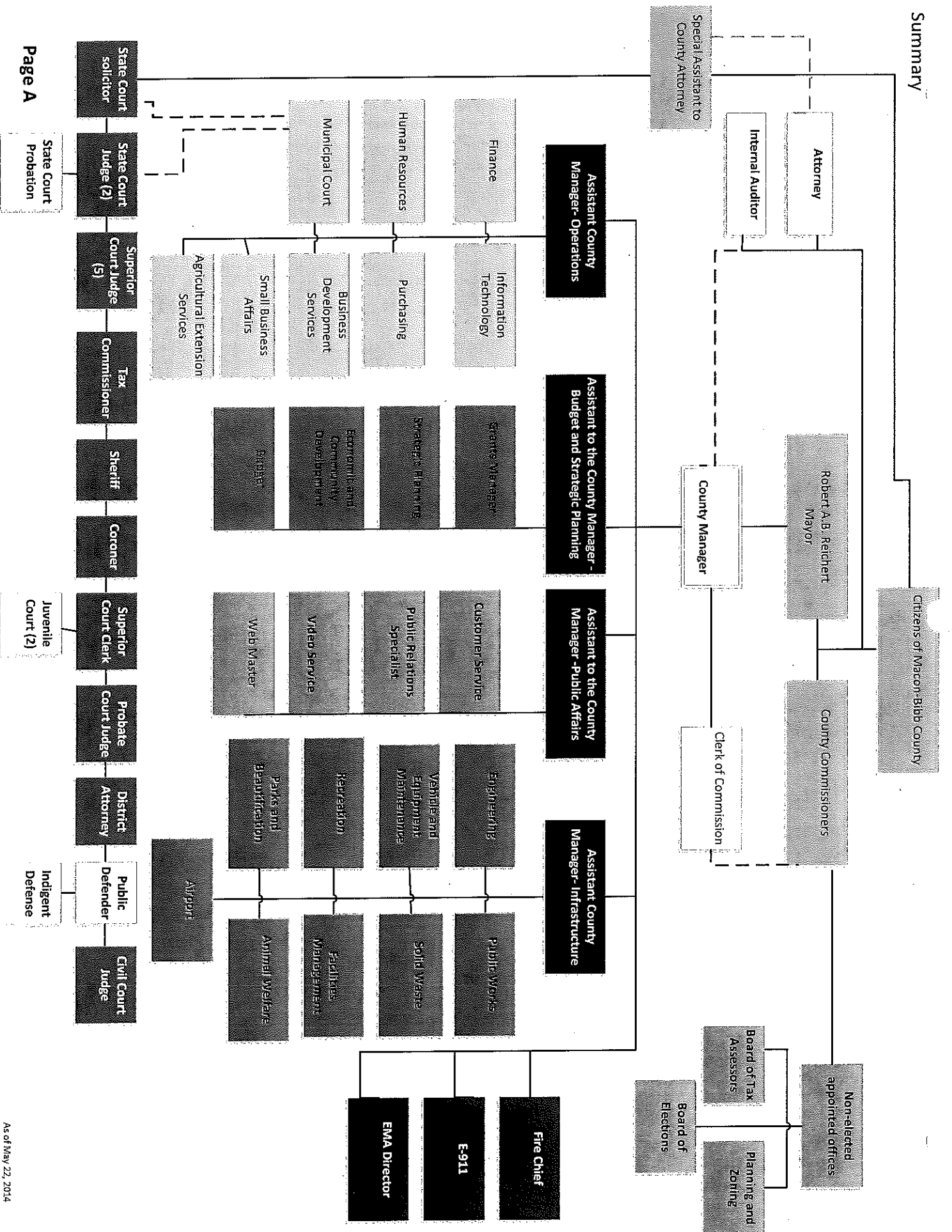
Mayor Elect
Robert A.B.
Reichert

Proposed
Chart of
Organization

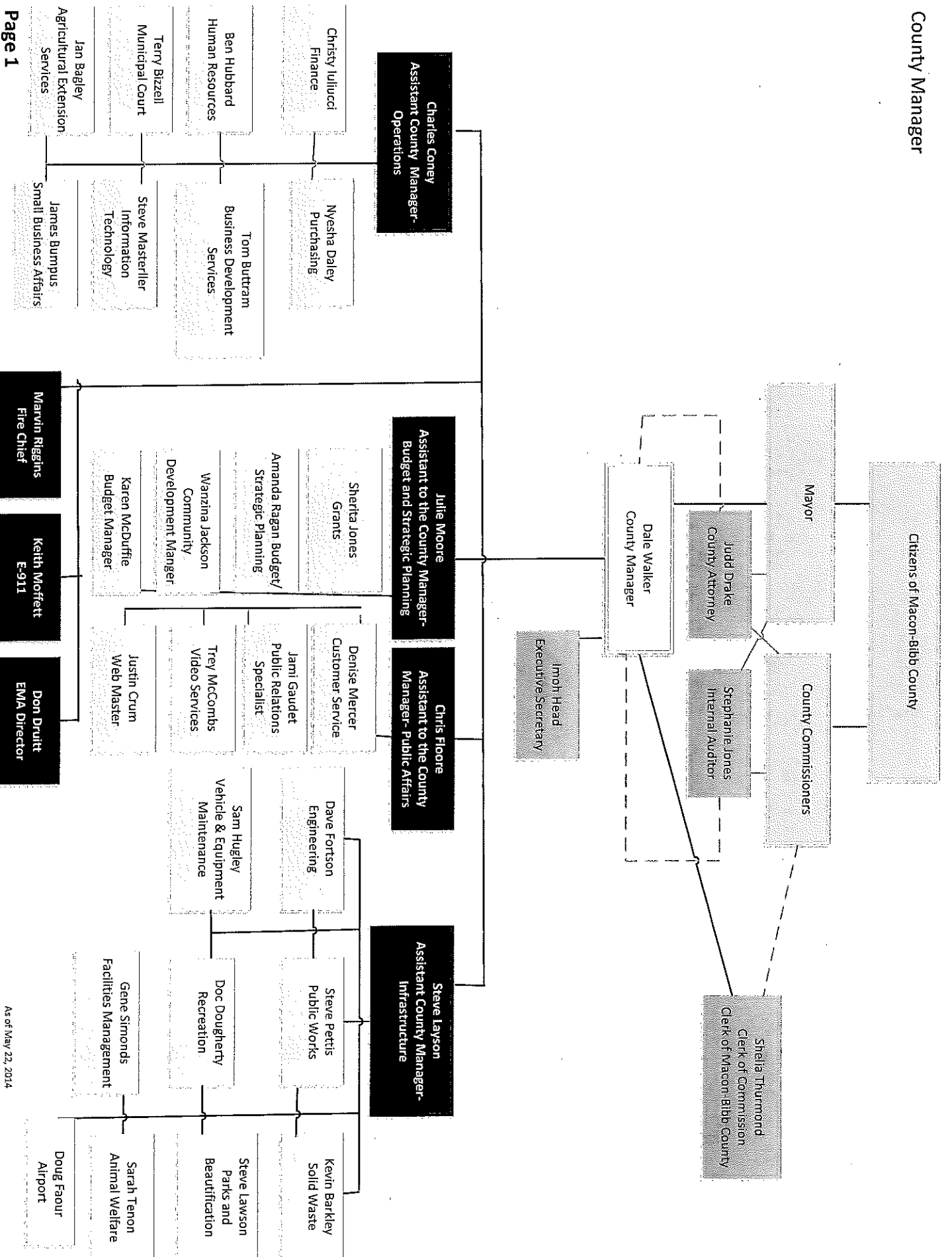
Macon-Bibb
County
Georgia



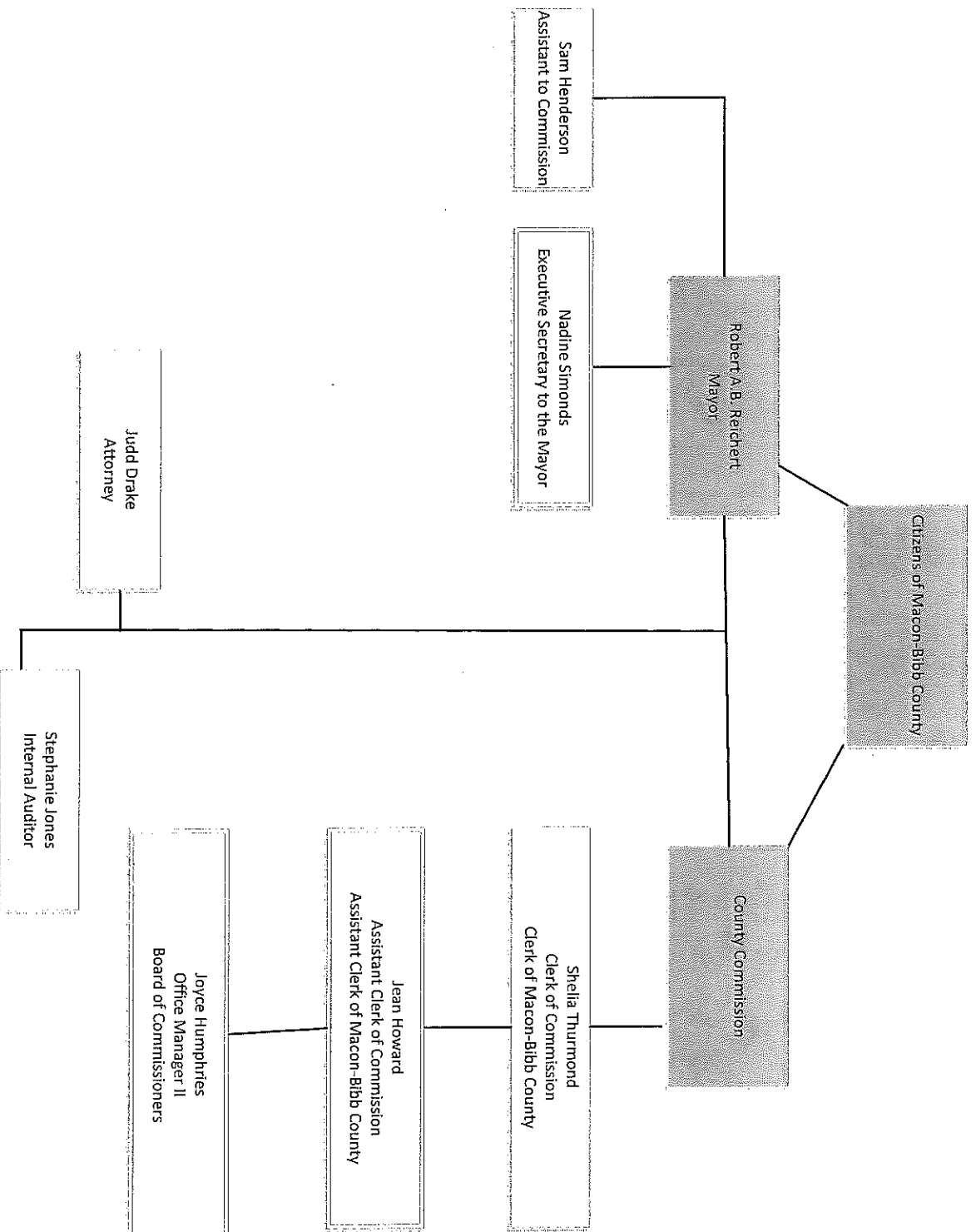
Summary



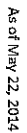
County Manager



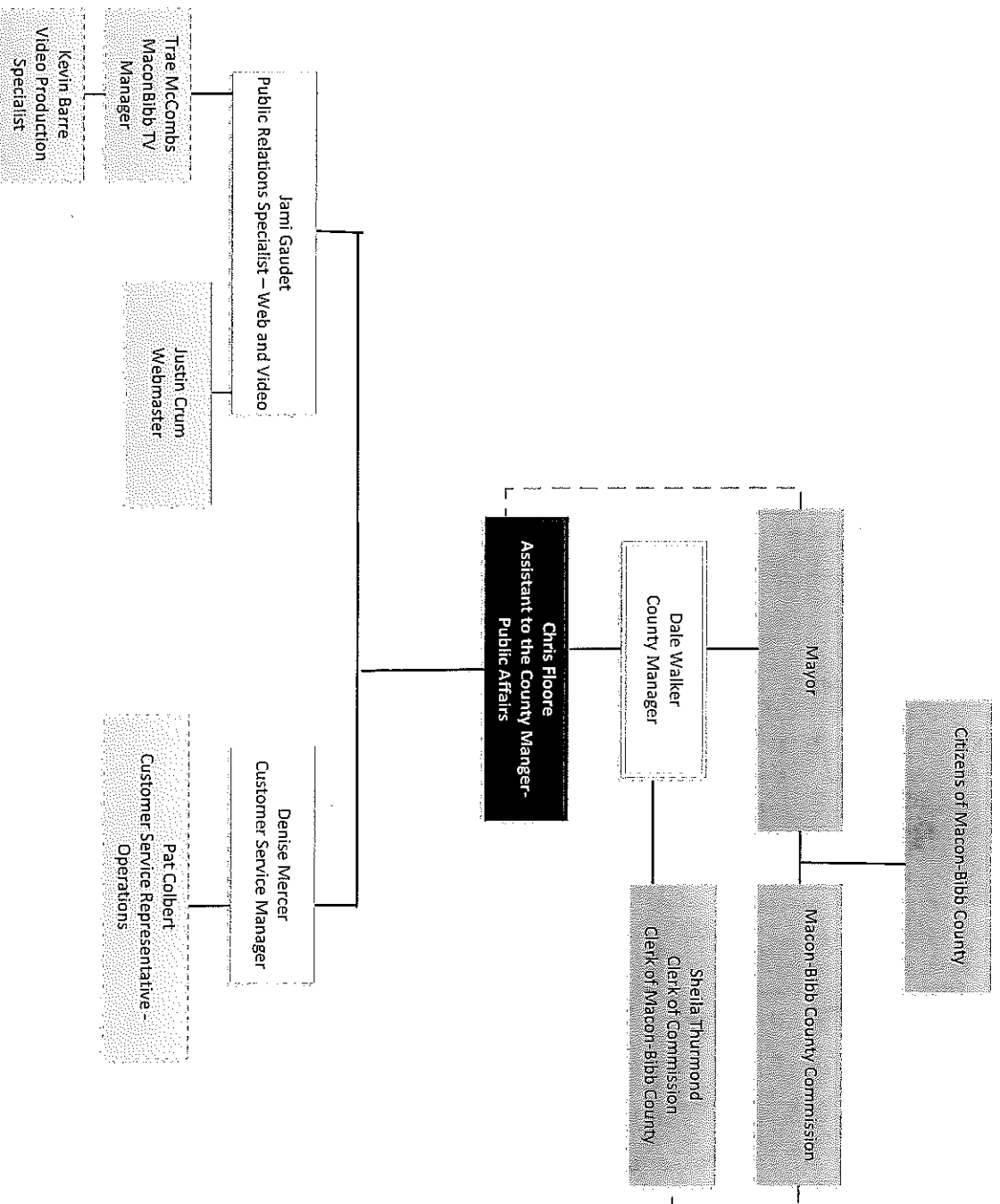
Mayor and Board of Commissioners



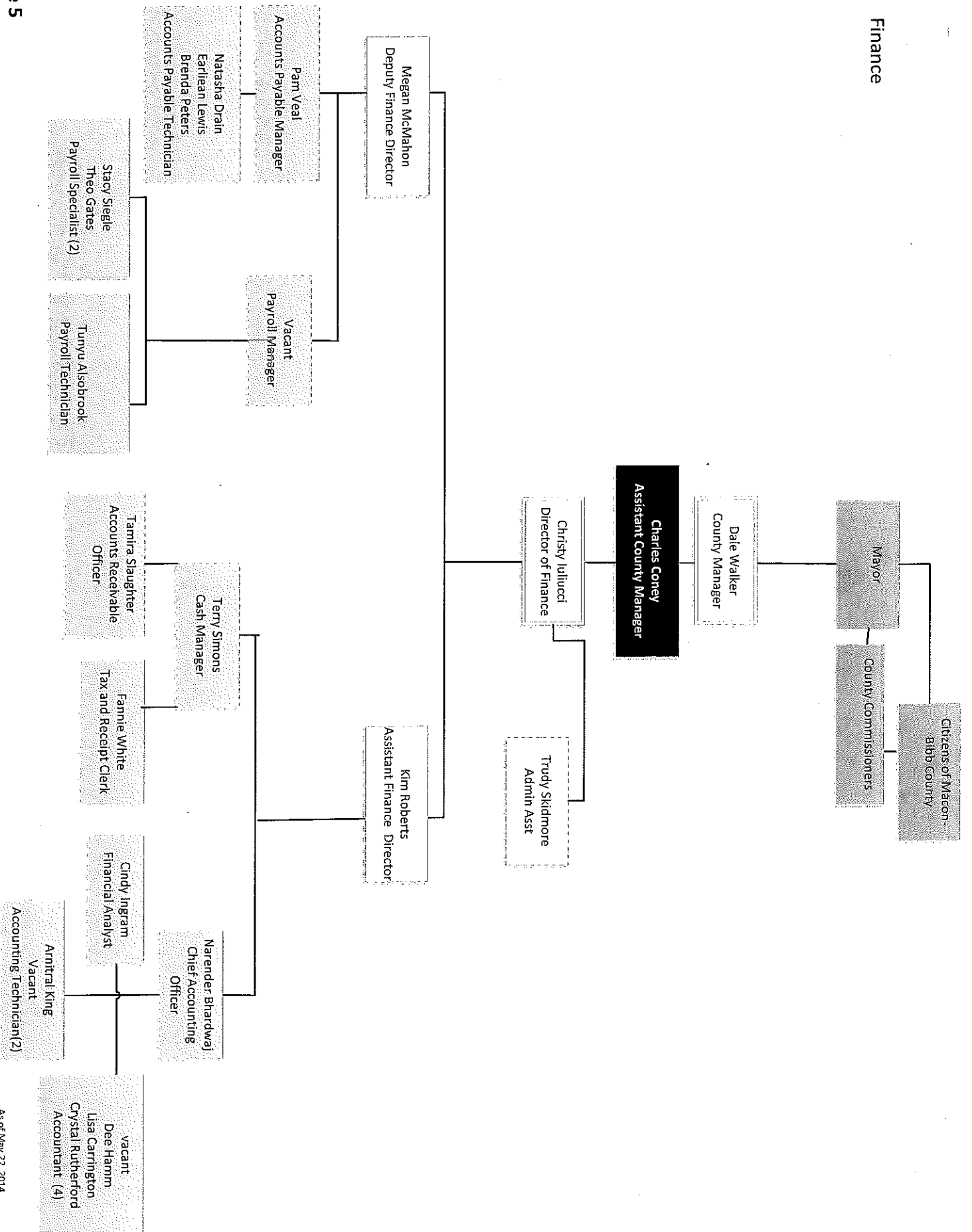
Citizens of Macon-Bibb County



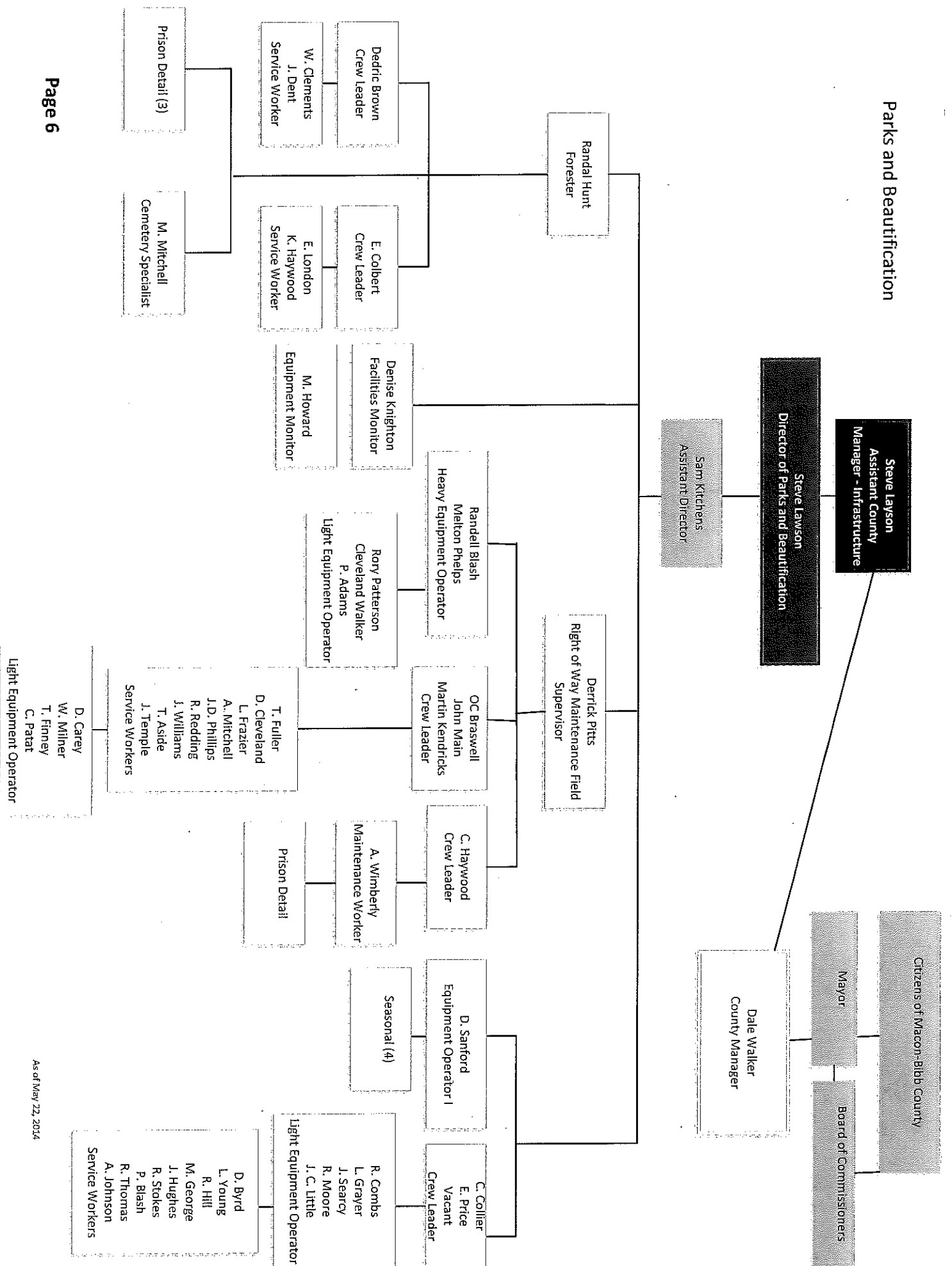
Public Affairs



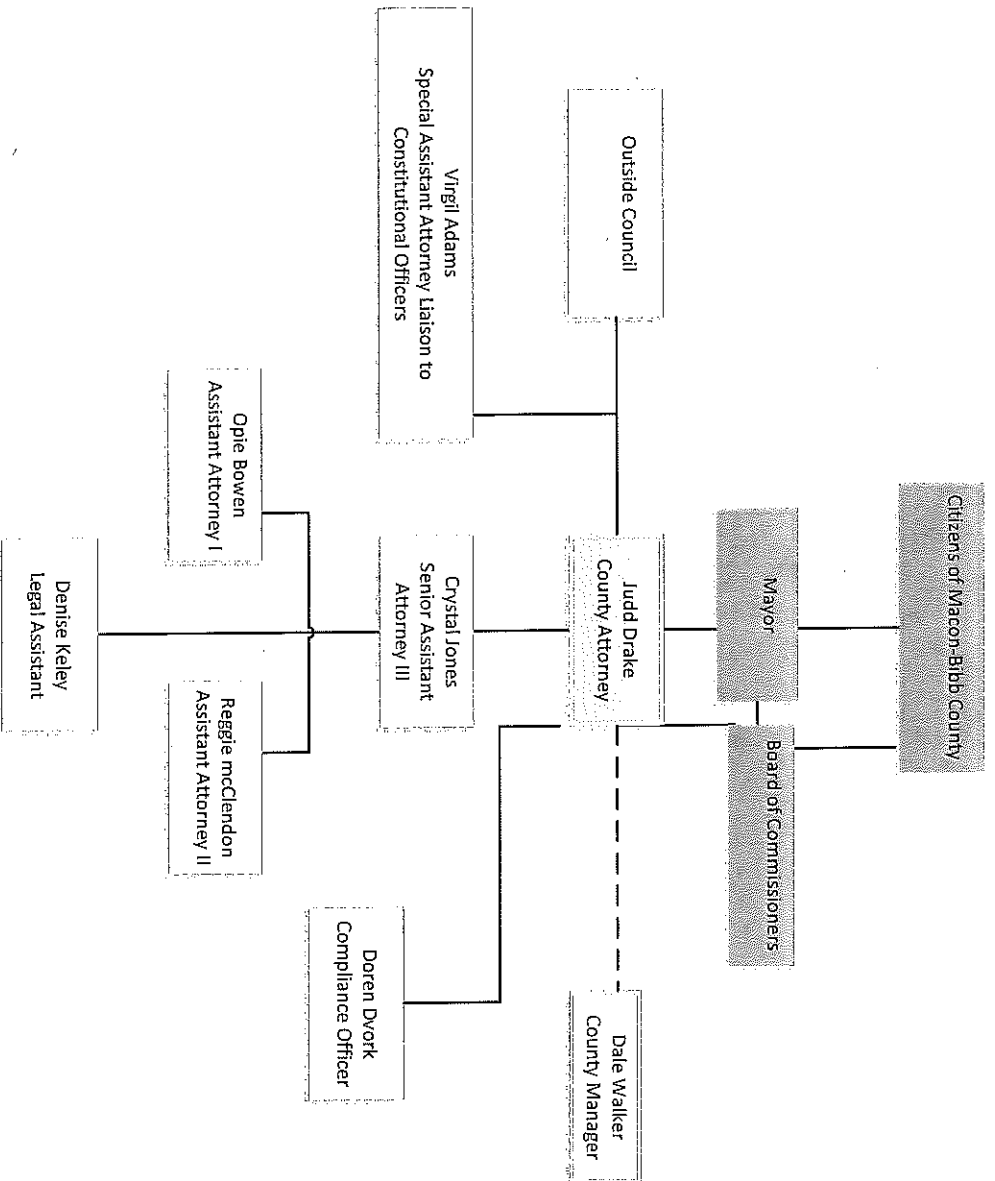
Finance



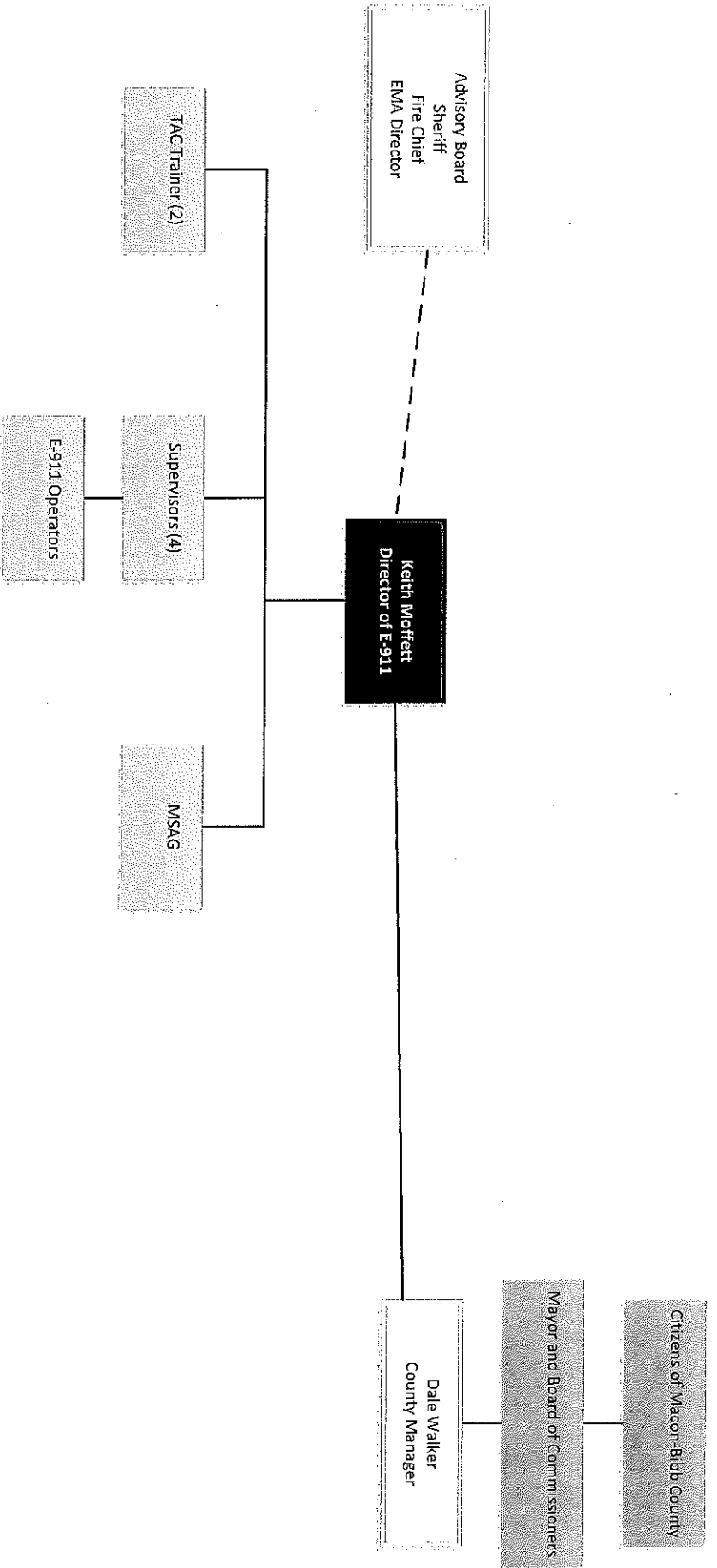
Parks and Beautification



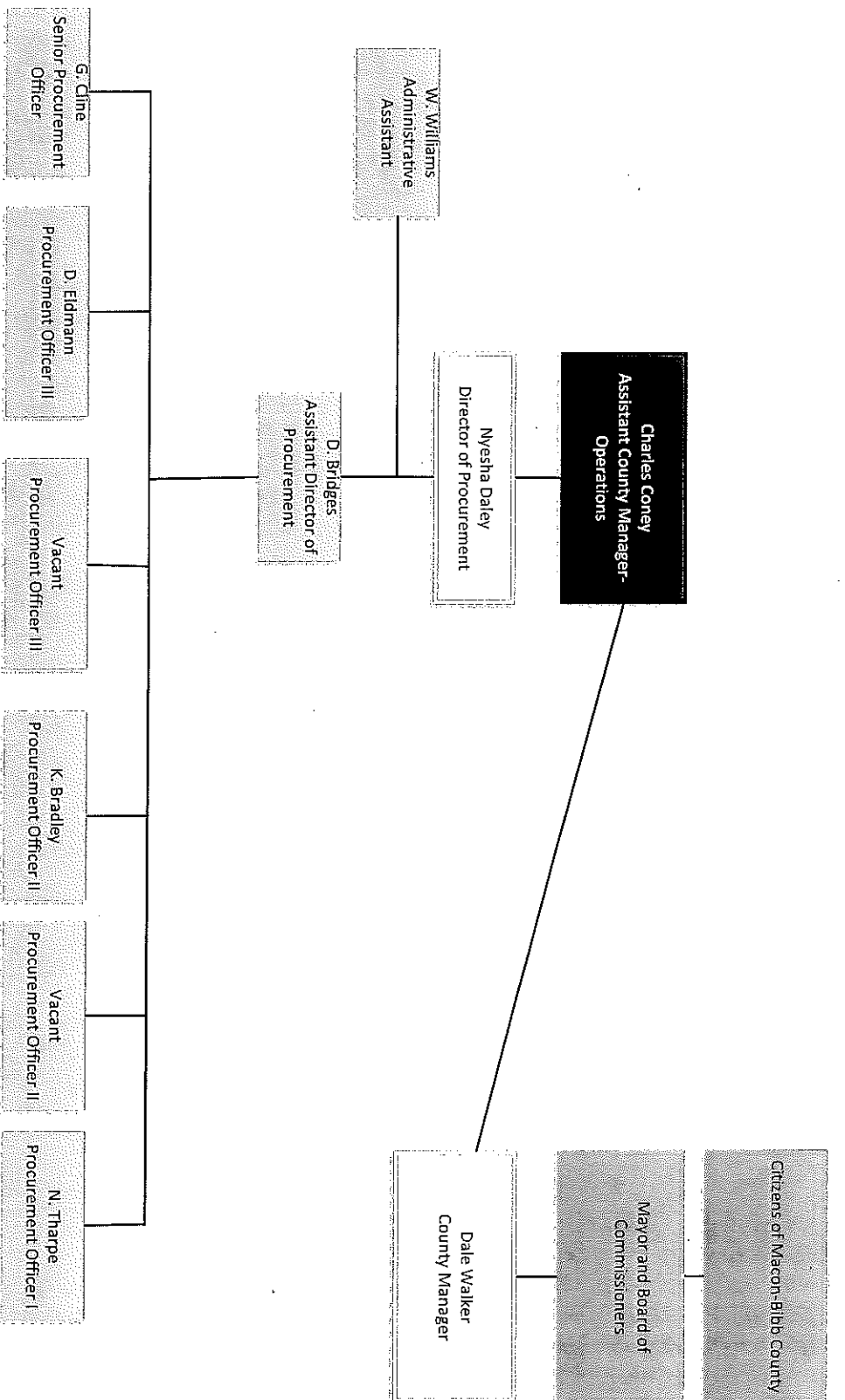
Legal



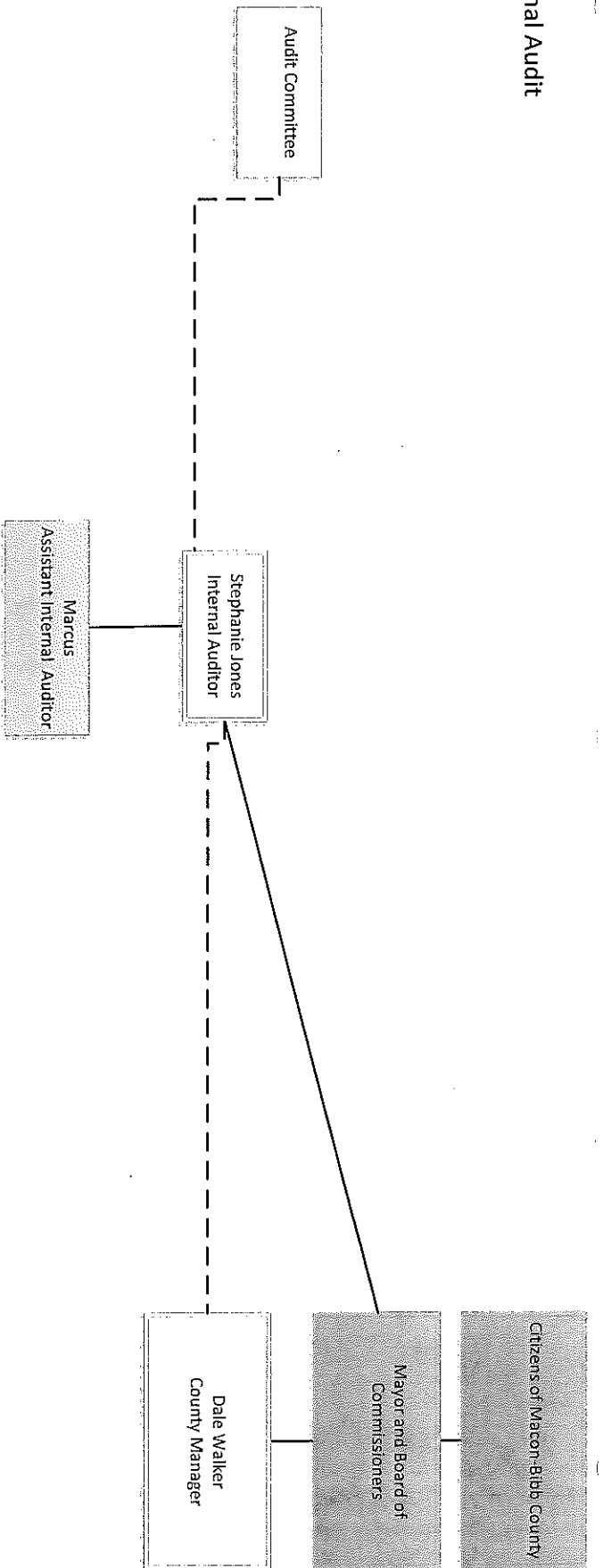
E-911



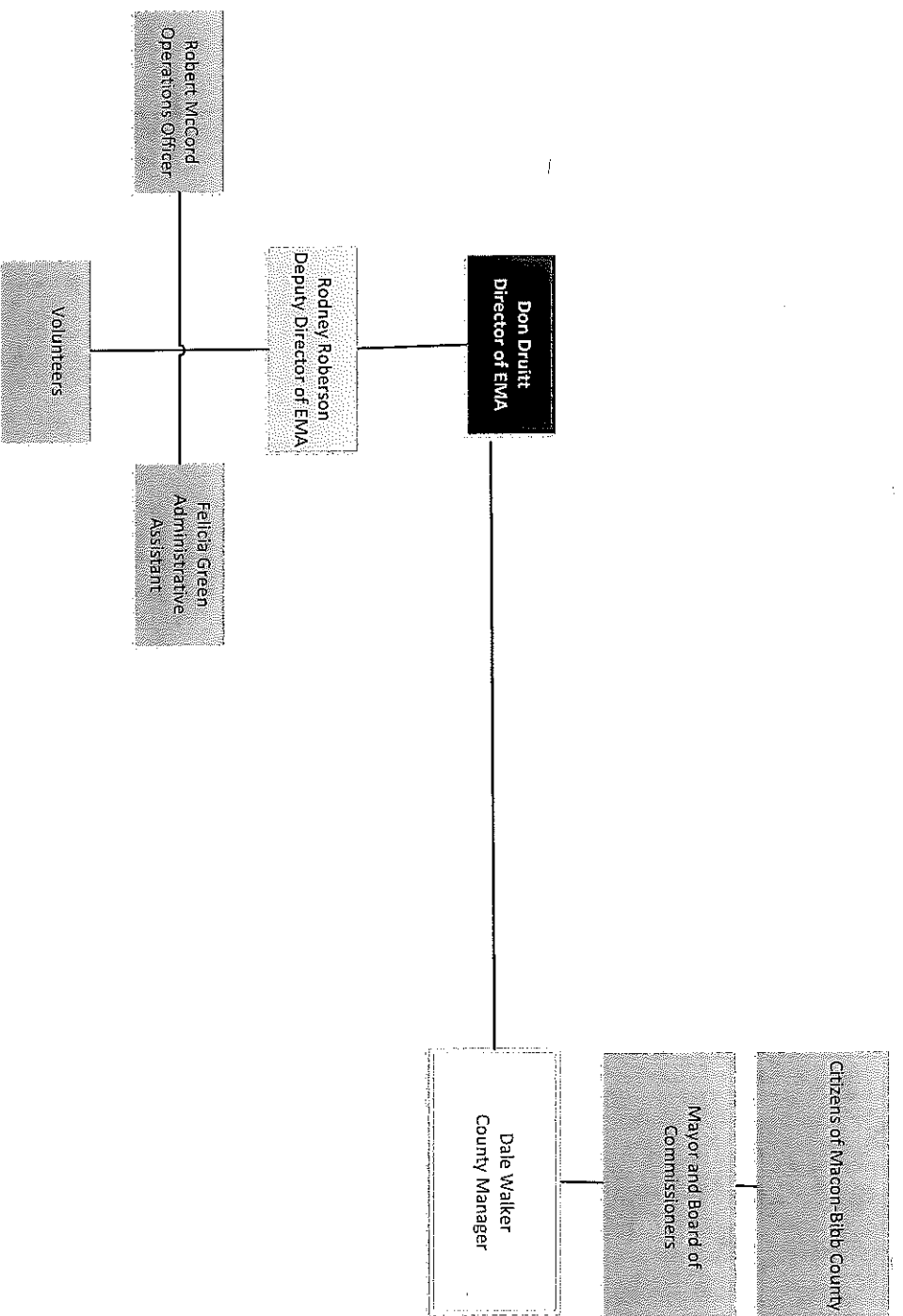
Procurement



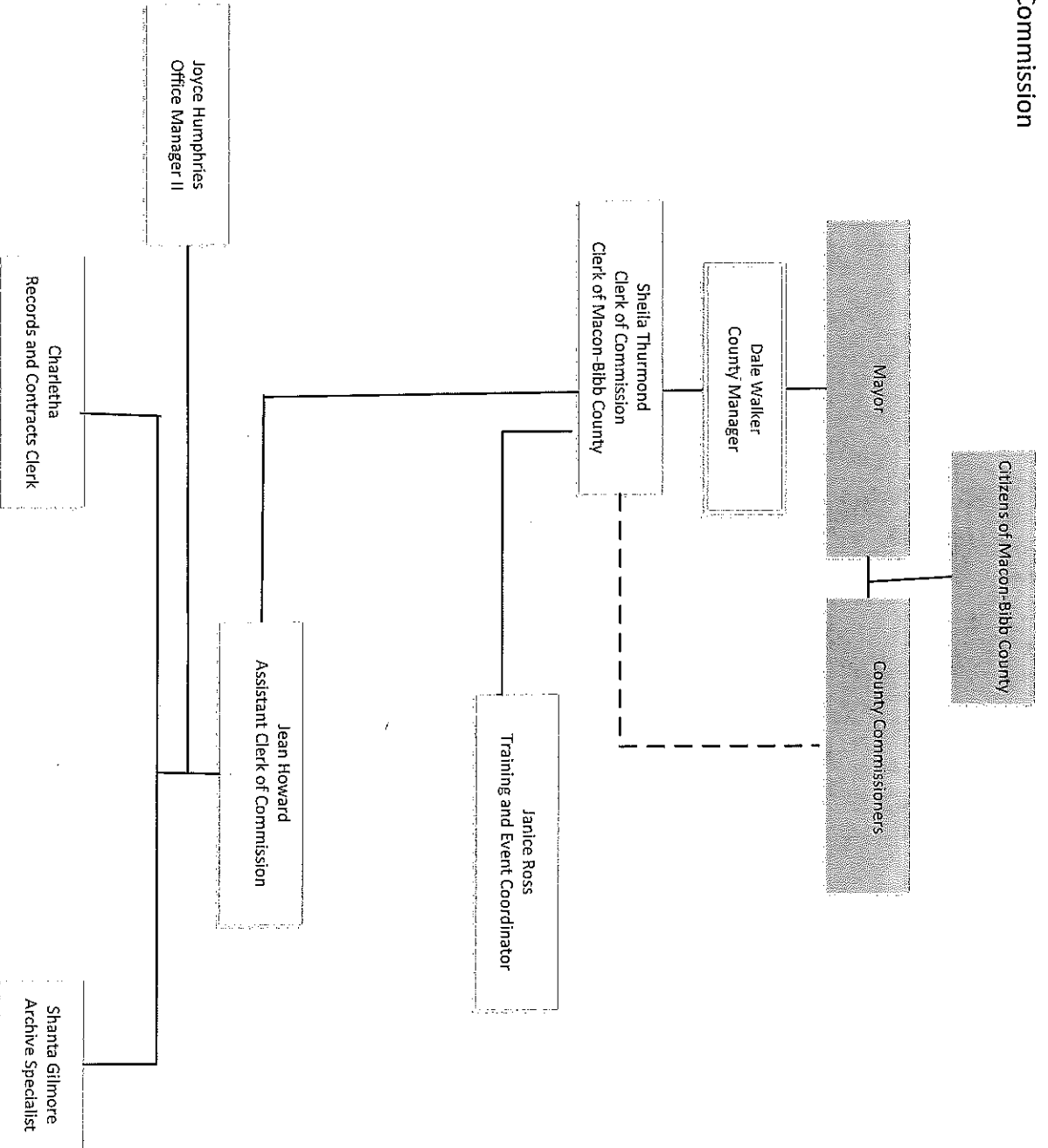
Internal Audit



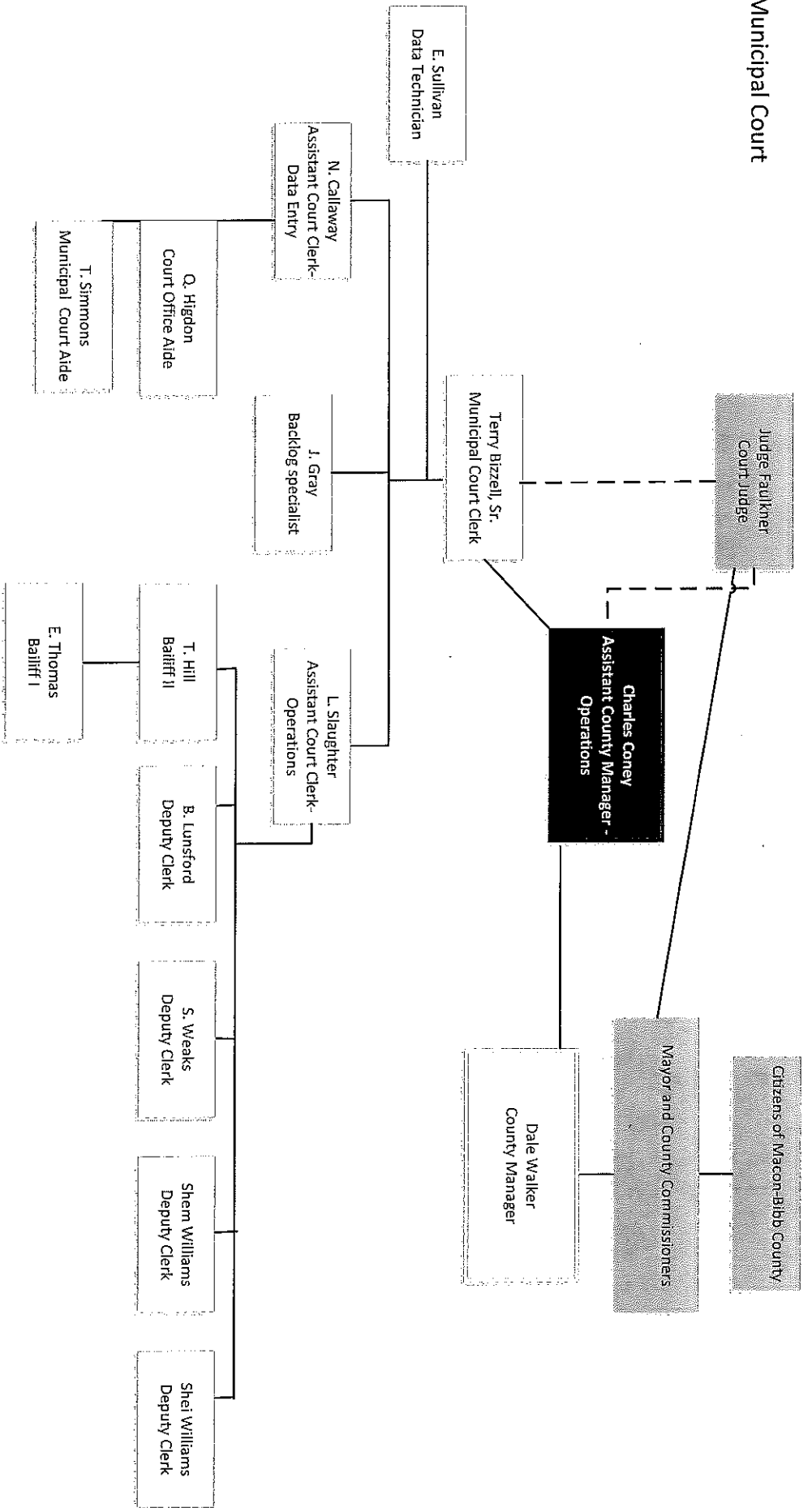
Emergency Management Agency



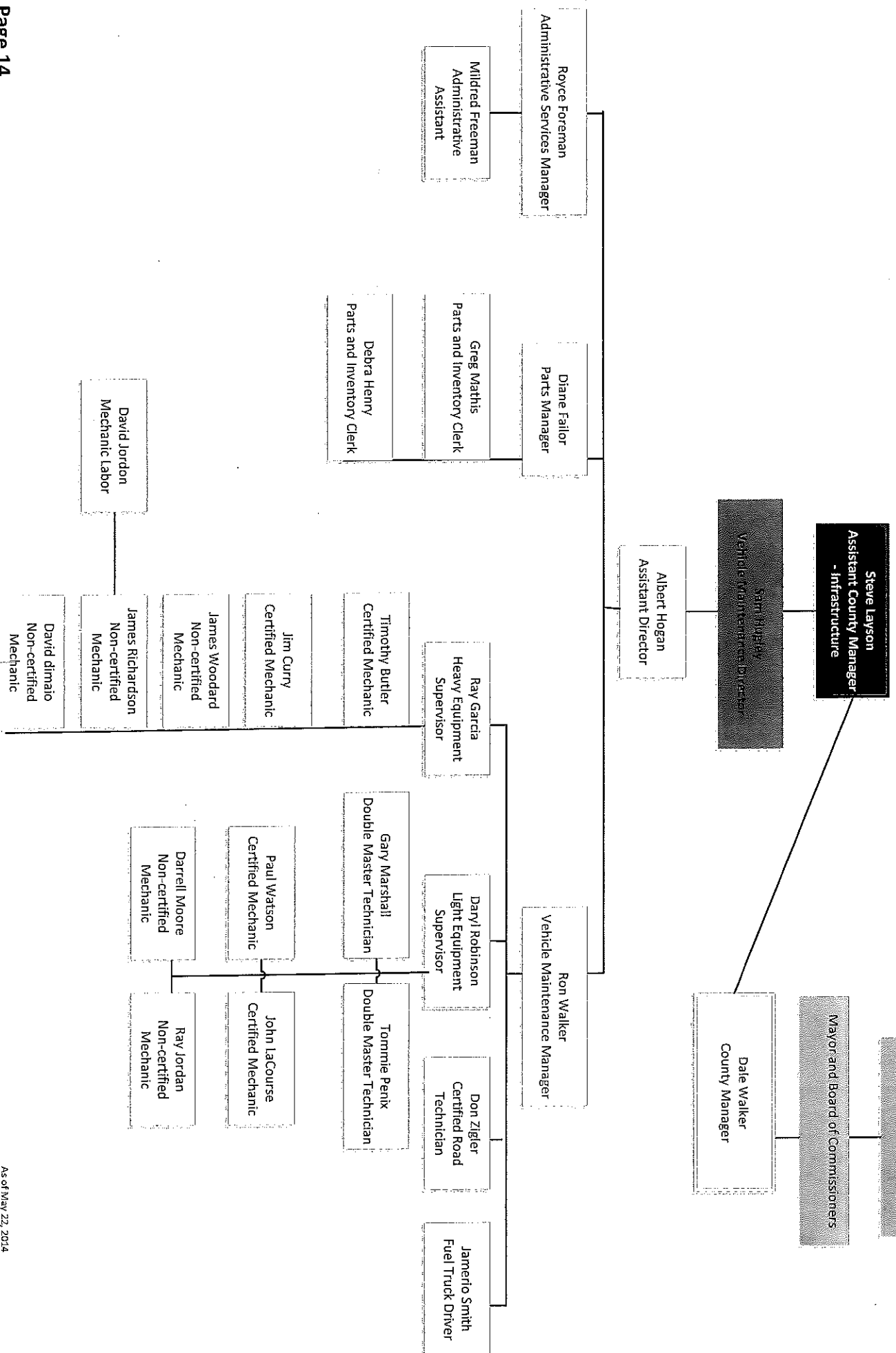
Clerk to the Commission



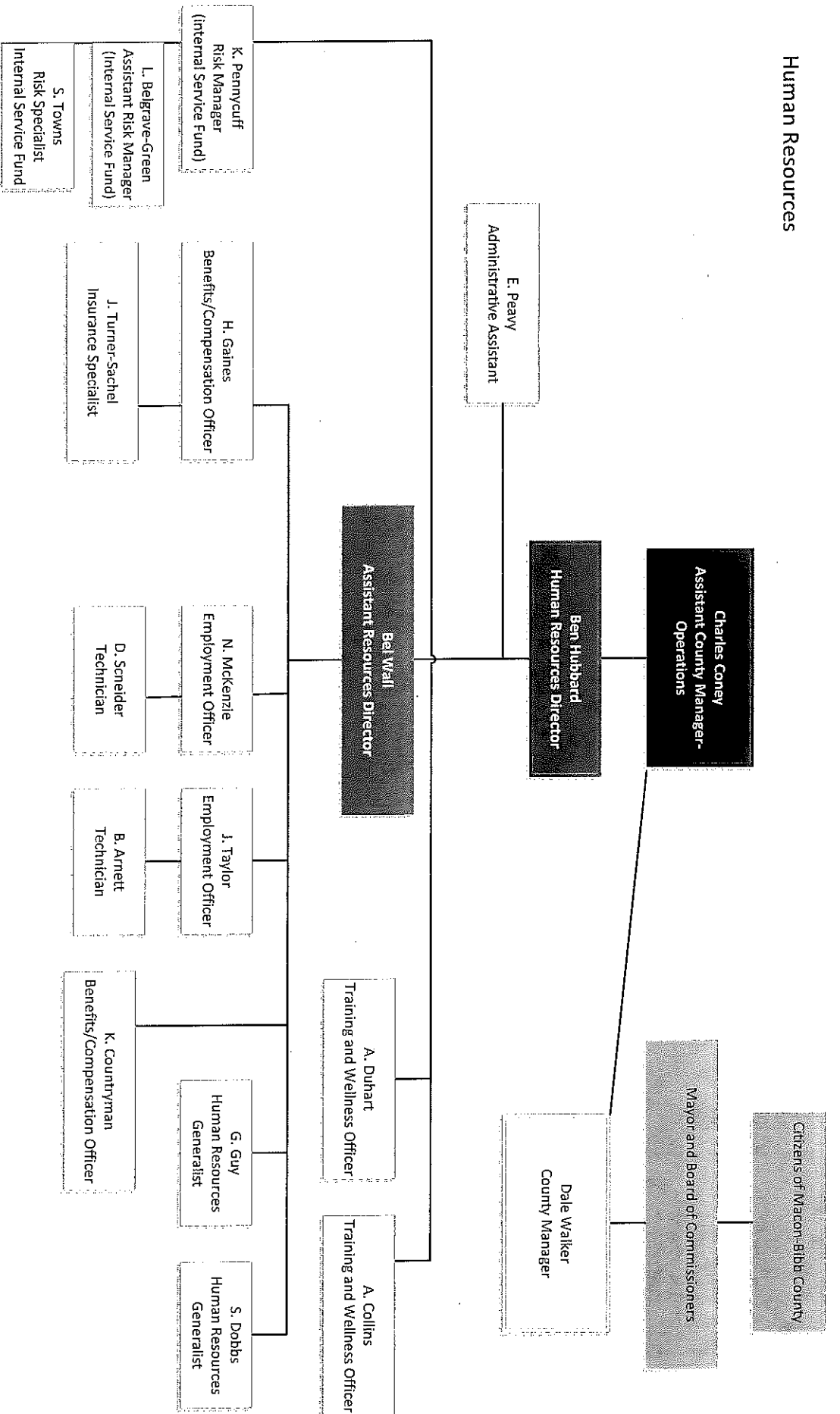
Municipal Court



Vehicle Maintenance

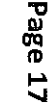


Human Resources

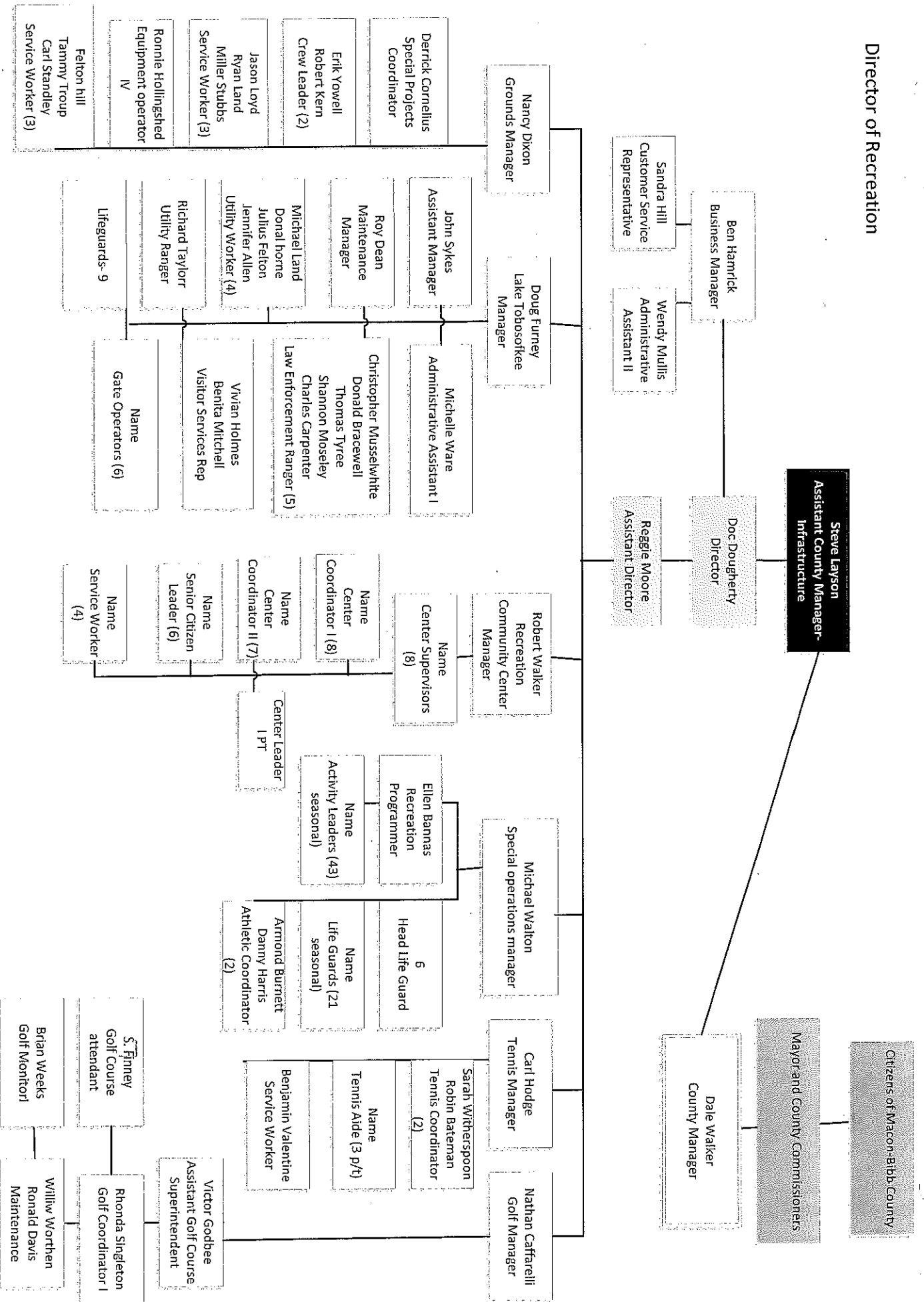


Copyright © 2007 by John Wiley & Sons, Inc.

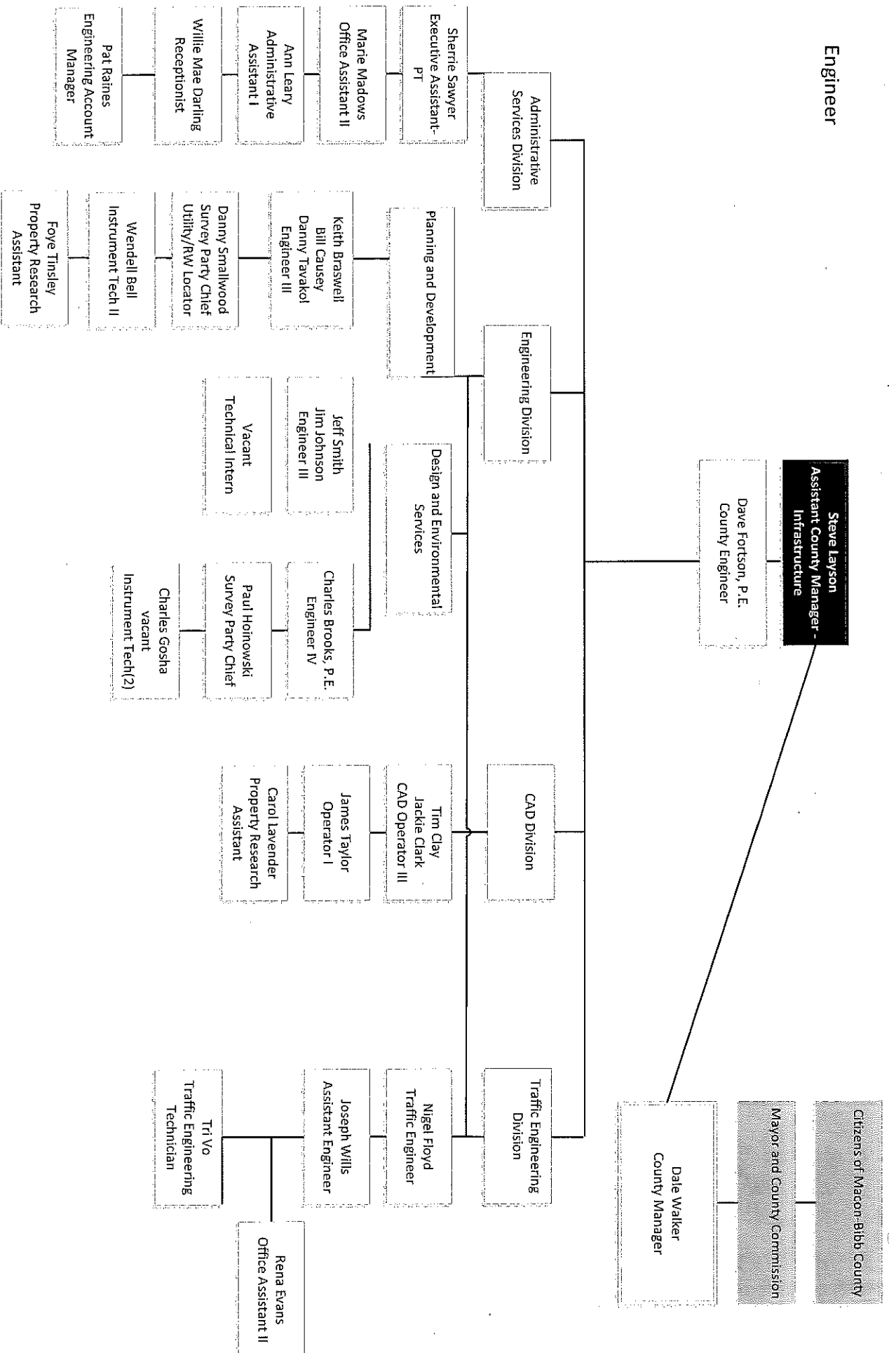
Citizens of Macon-Bibb County



Director of Recreation

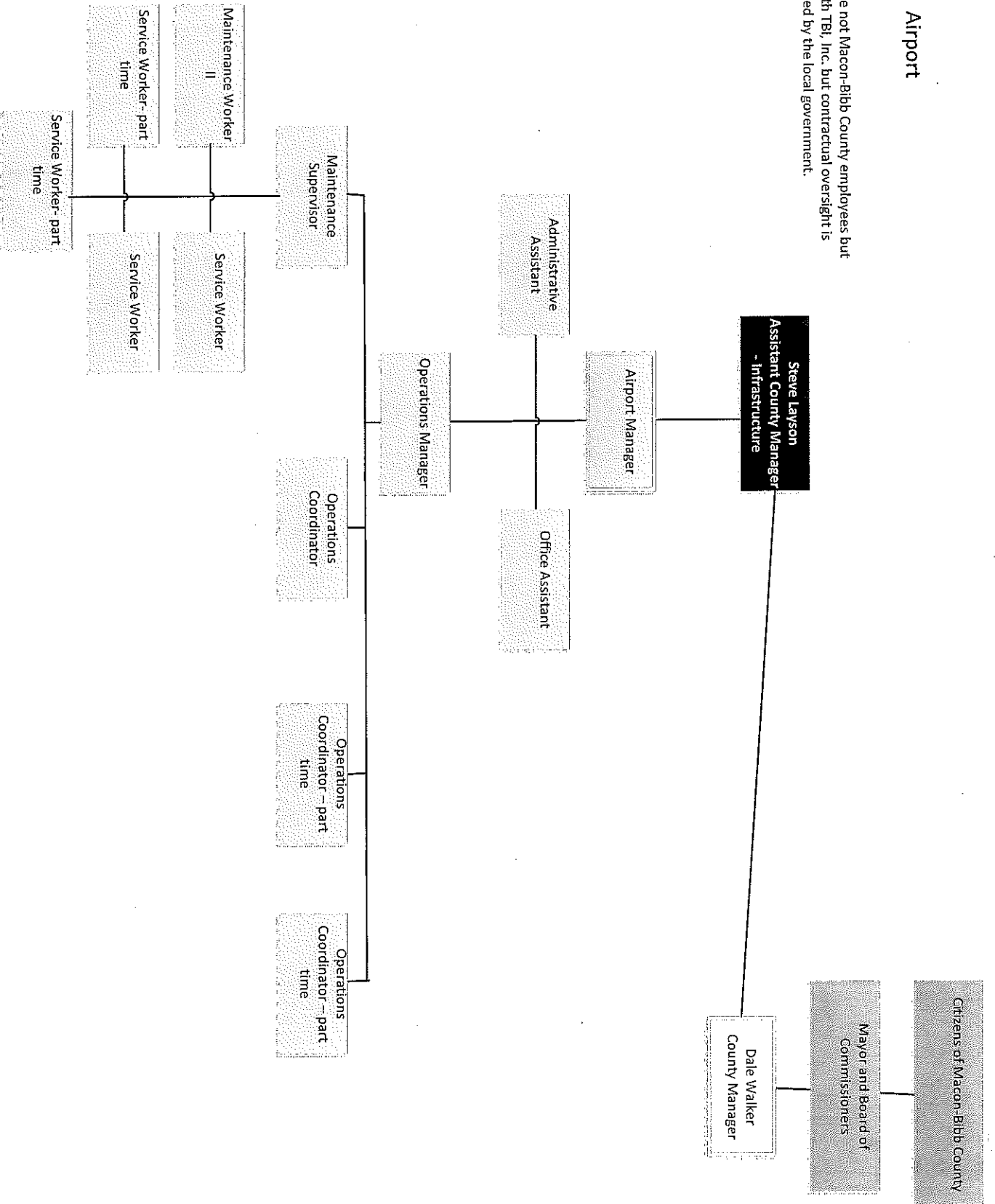


Engineer

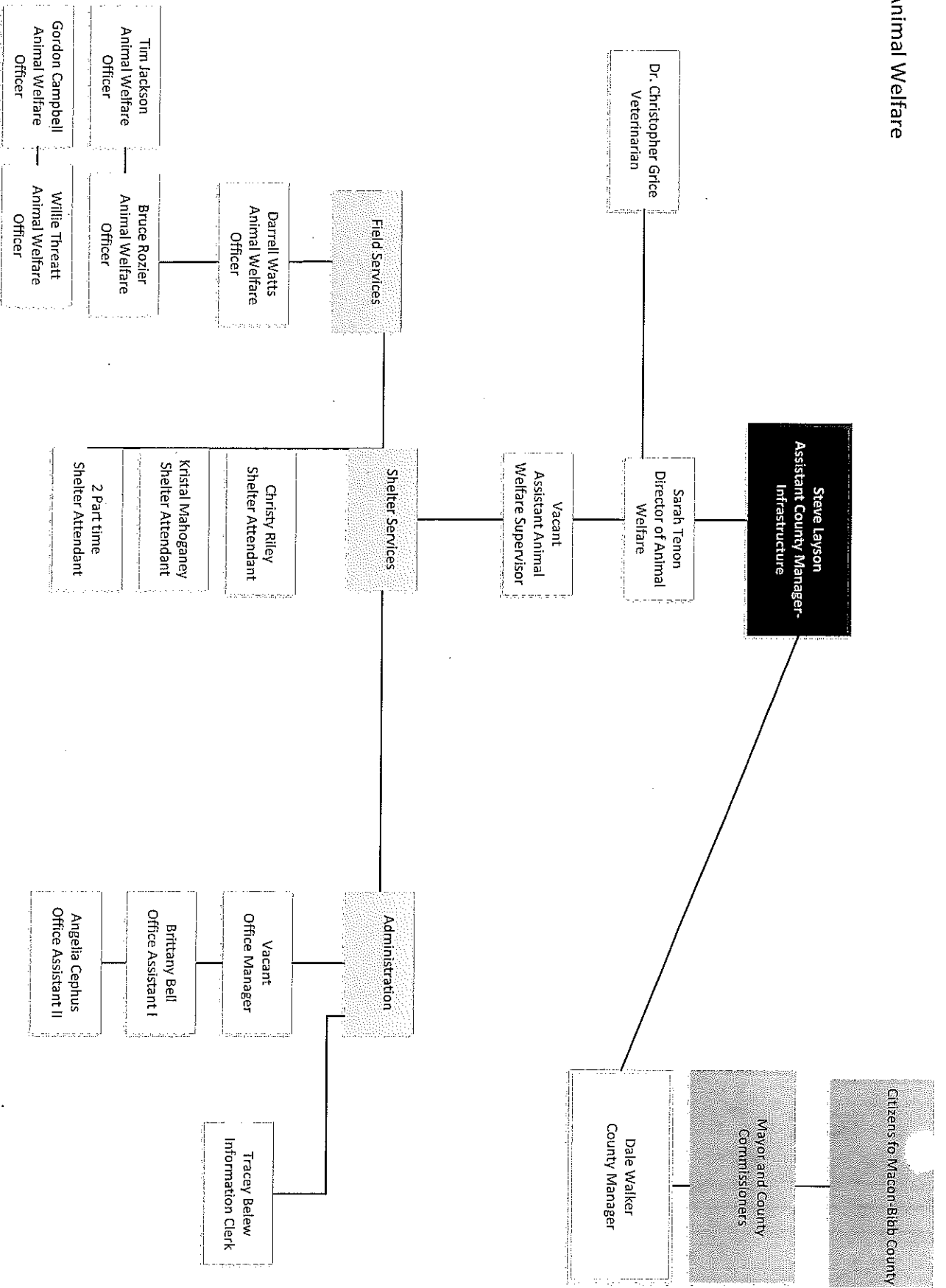


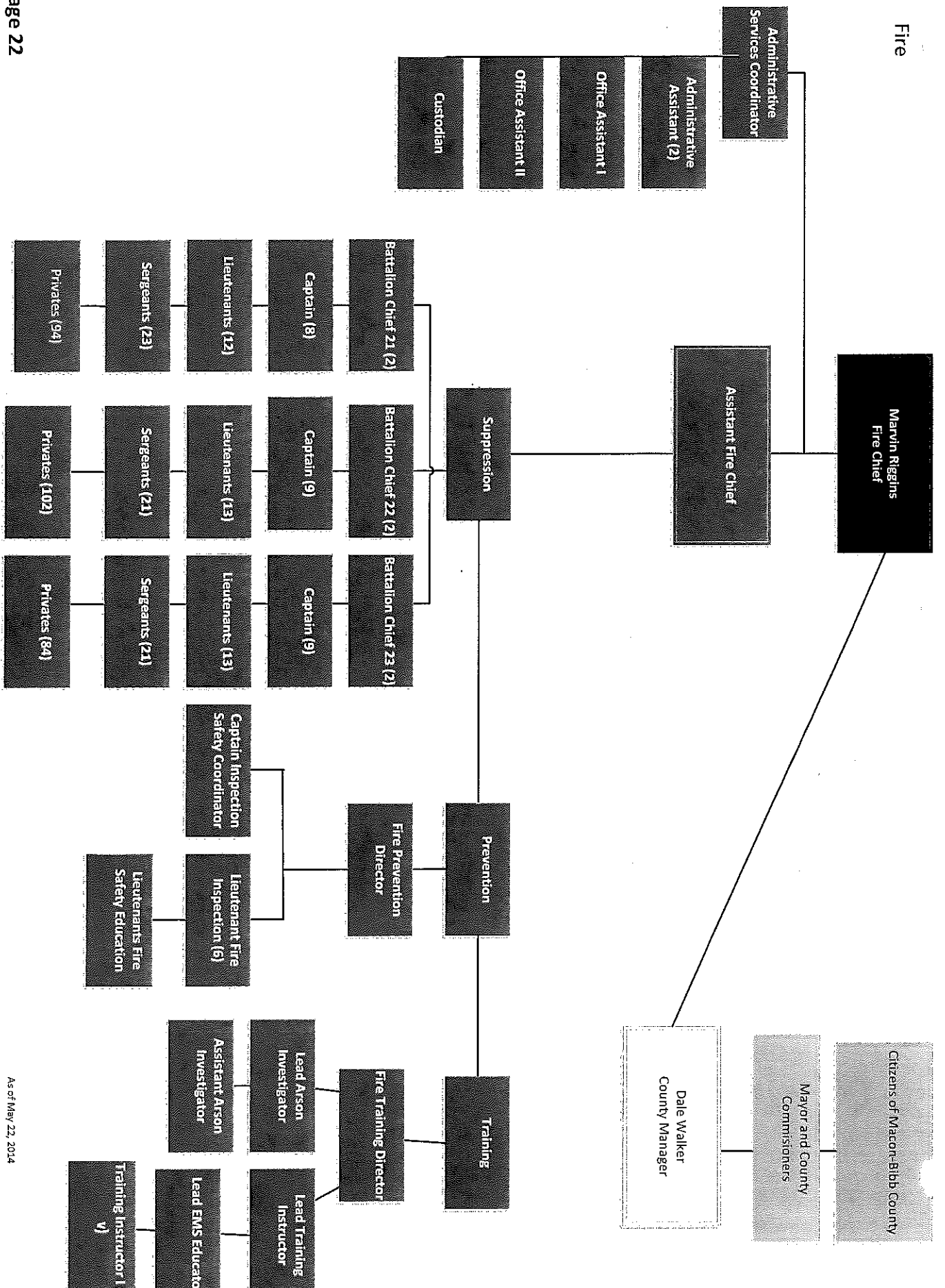
Airport

Airport employees are not Macon-Bibb County employees but are contractual with TBI, Inc. but contractual oversight is performed by the local government.

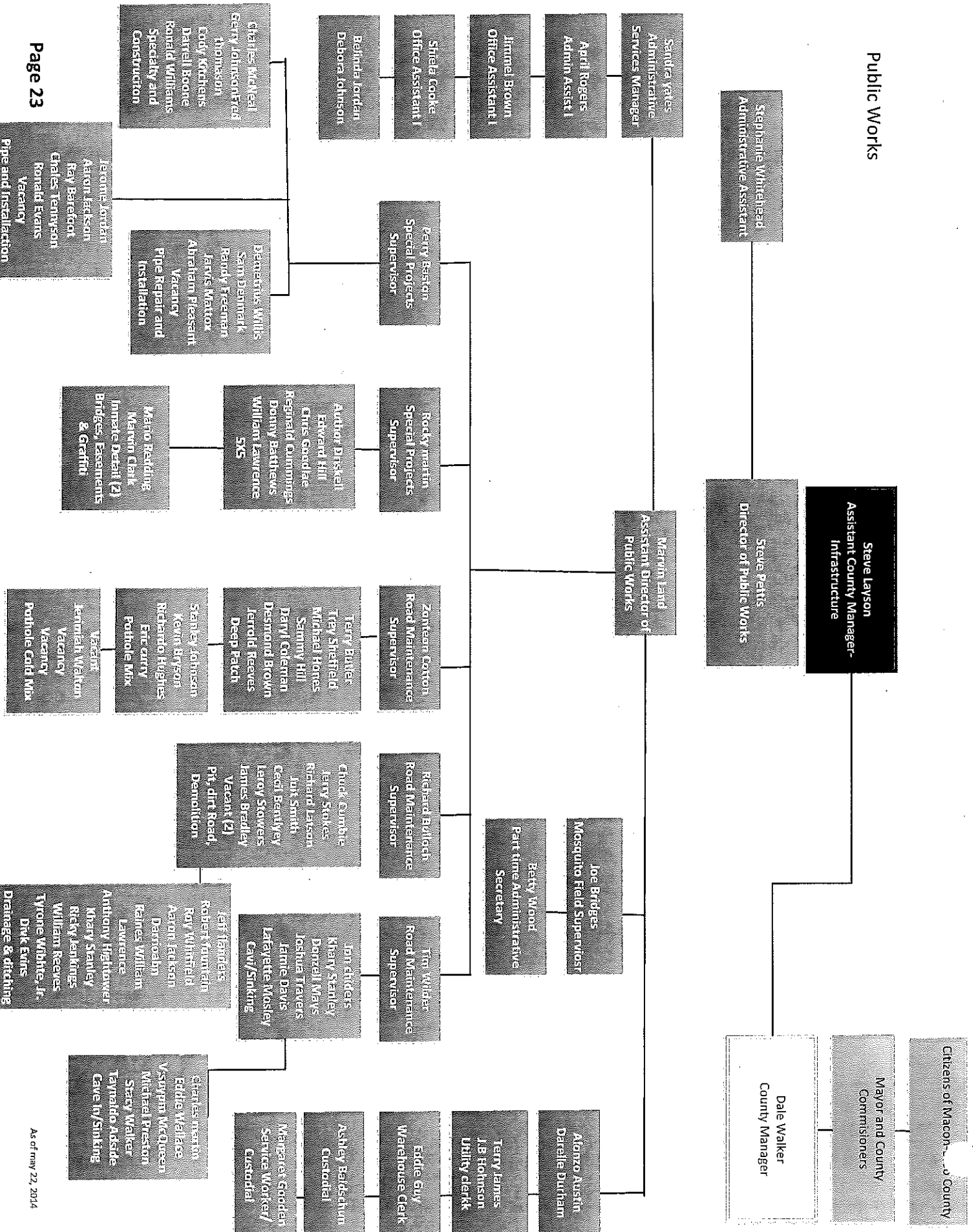


Animal Welfare

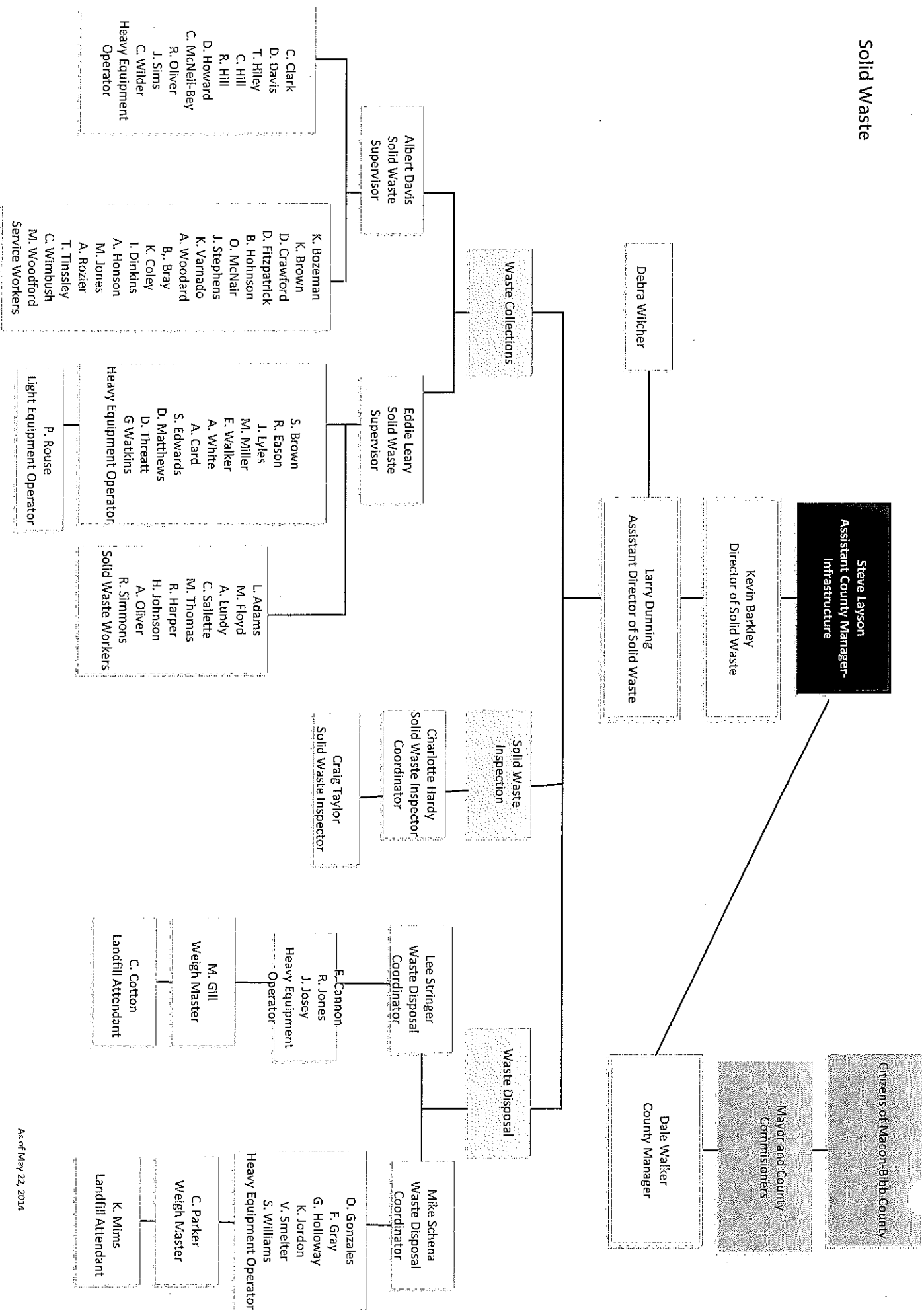




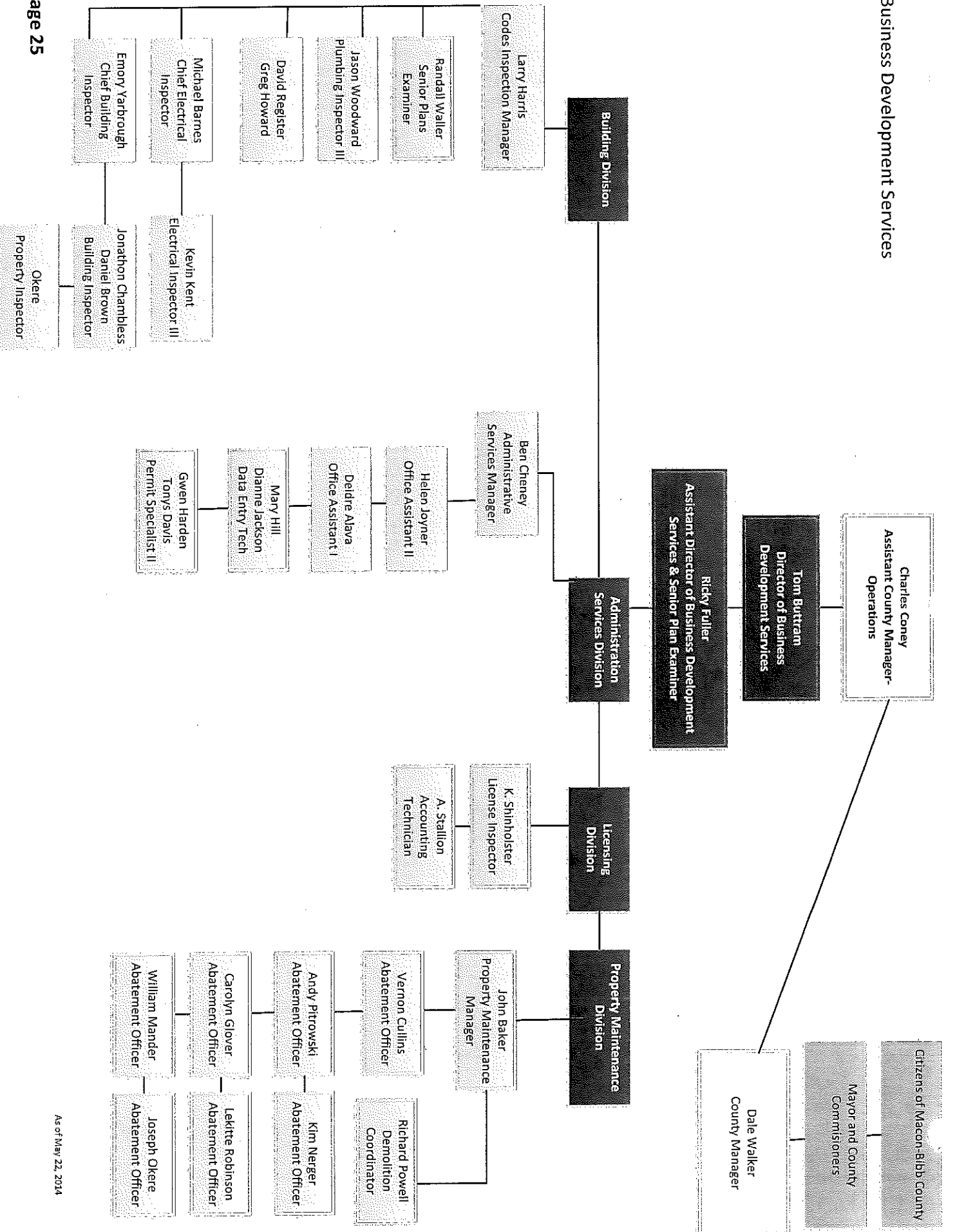
Public Works



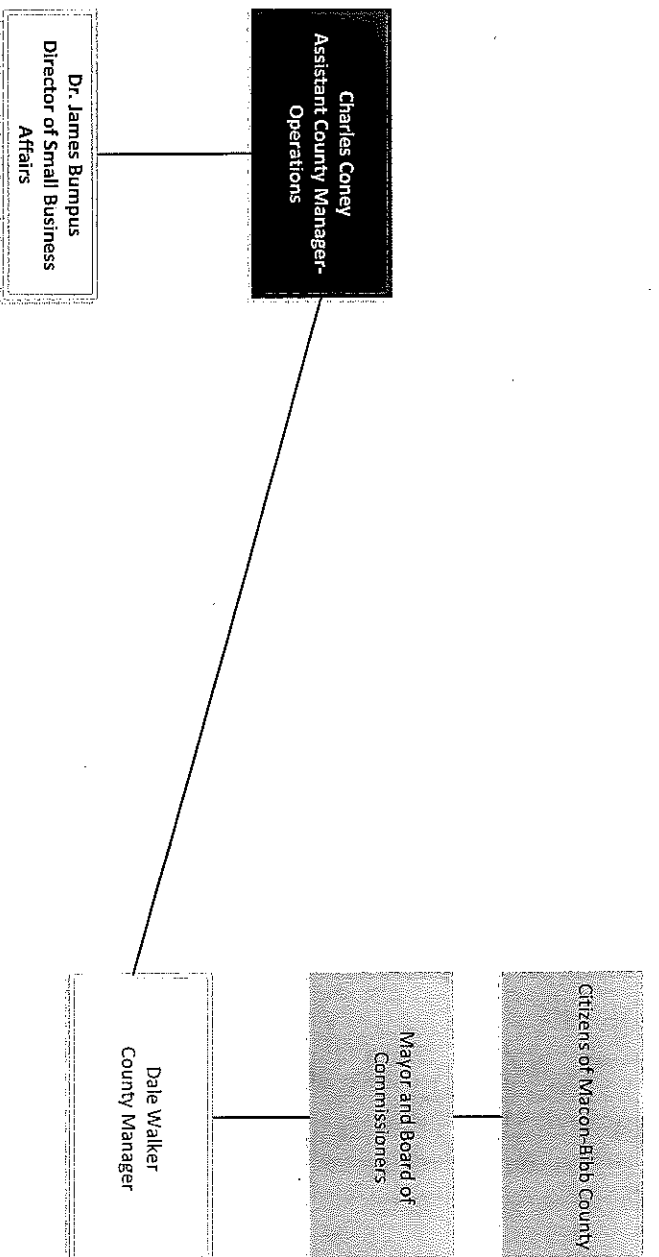
Solid Waste



Business Development Services

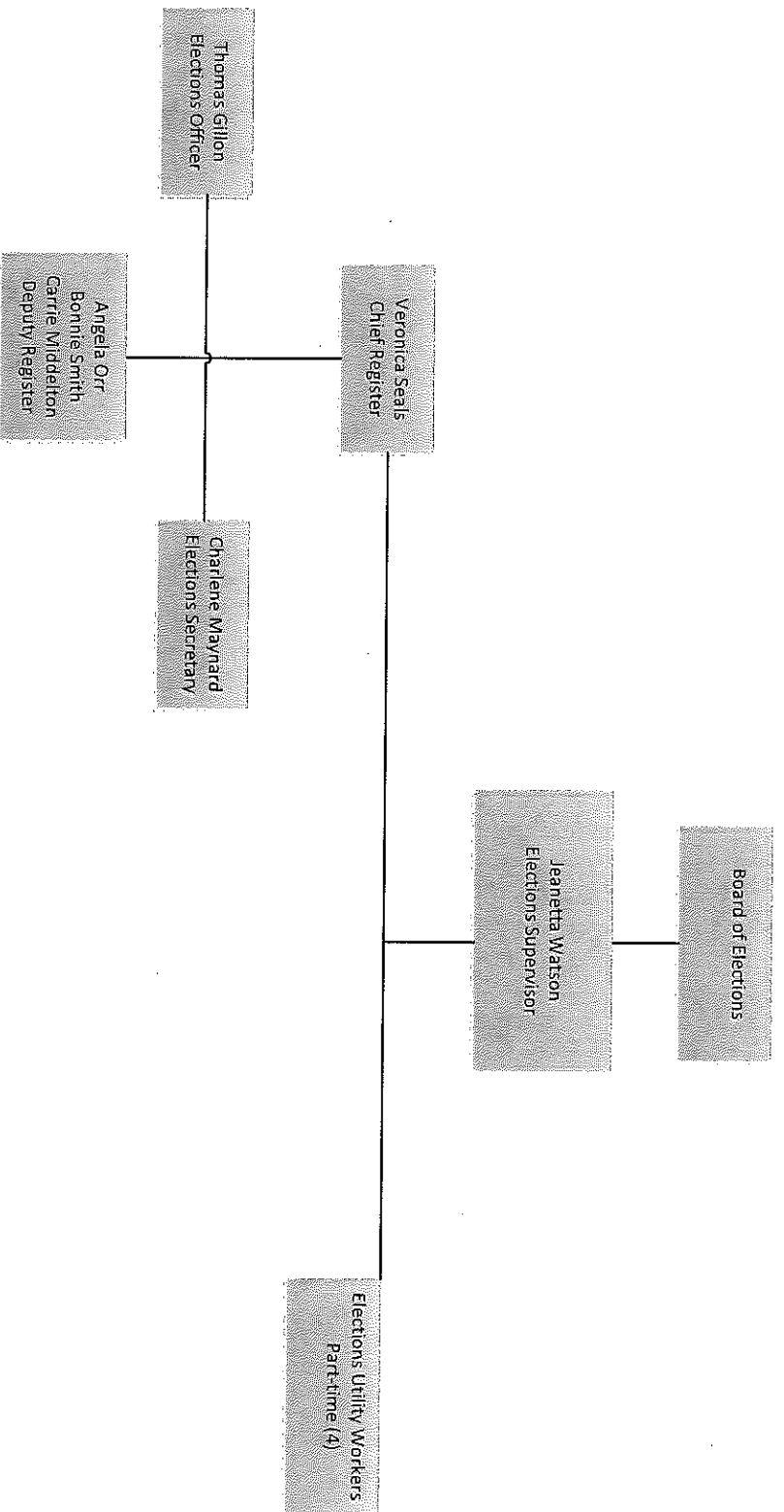


Small Business Affairs

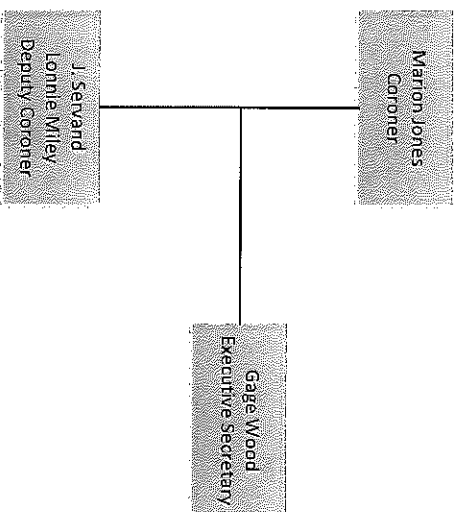


As of May 22, 2014

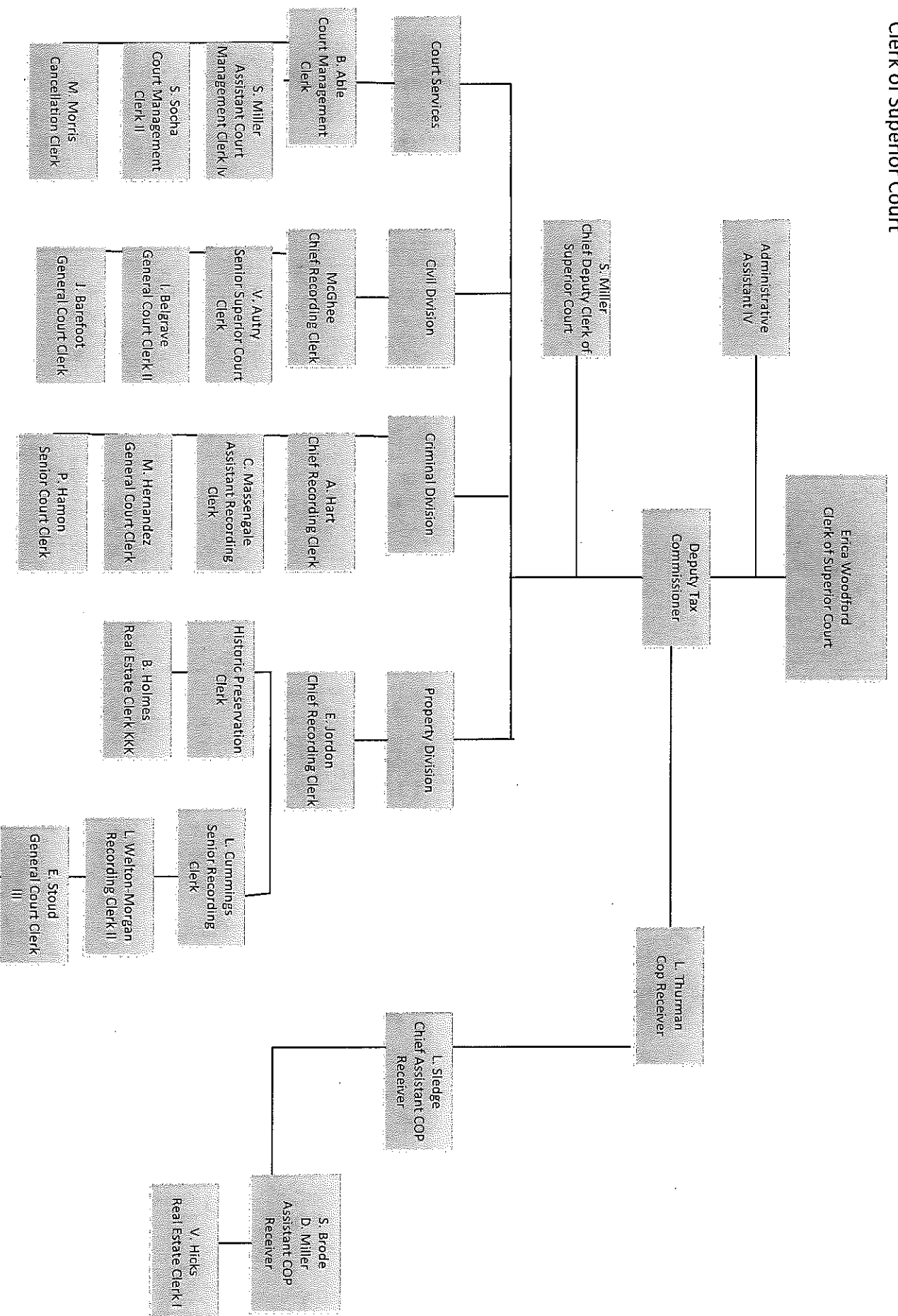
Board of Elections



Coroner

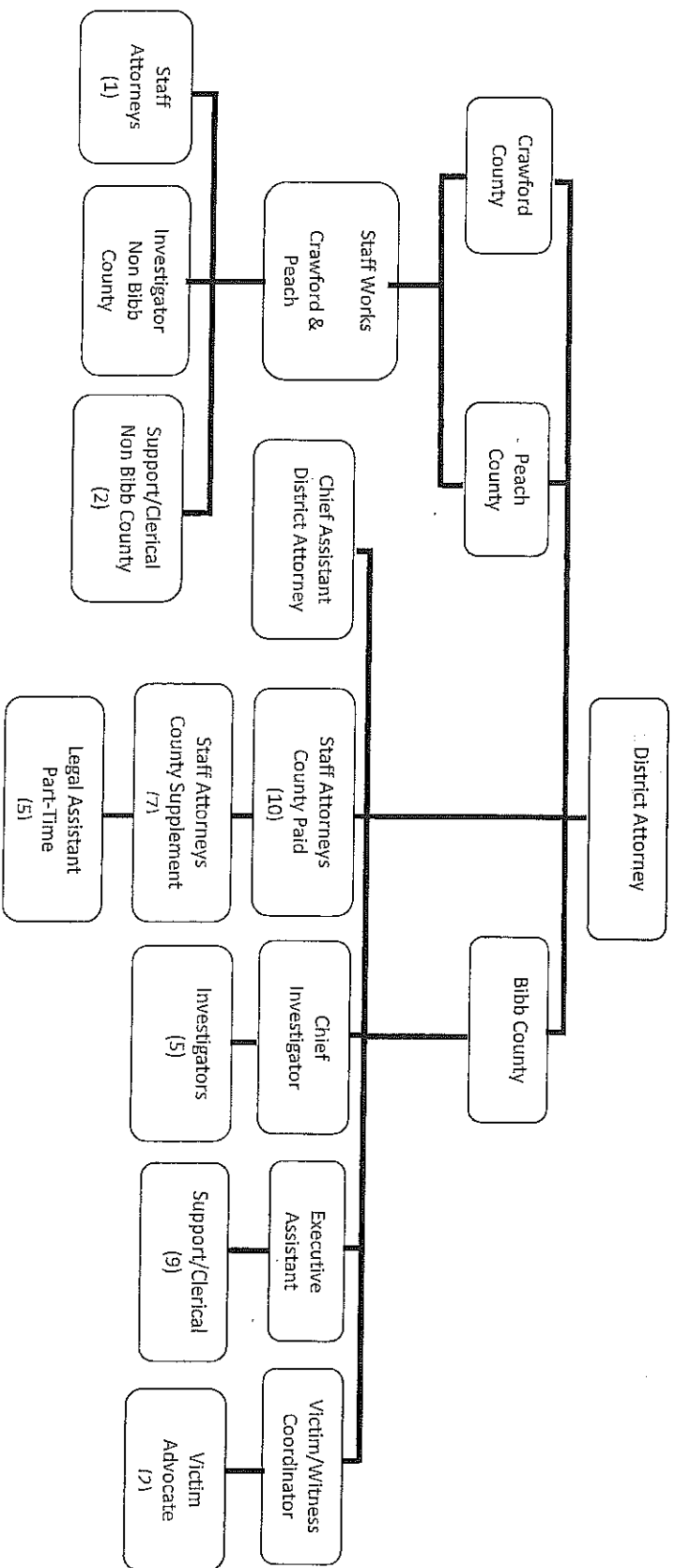


Clerk of Superior Court



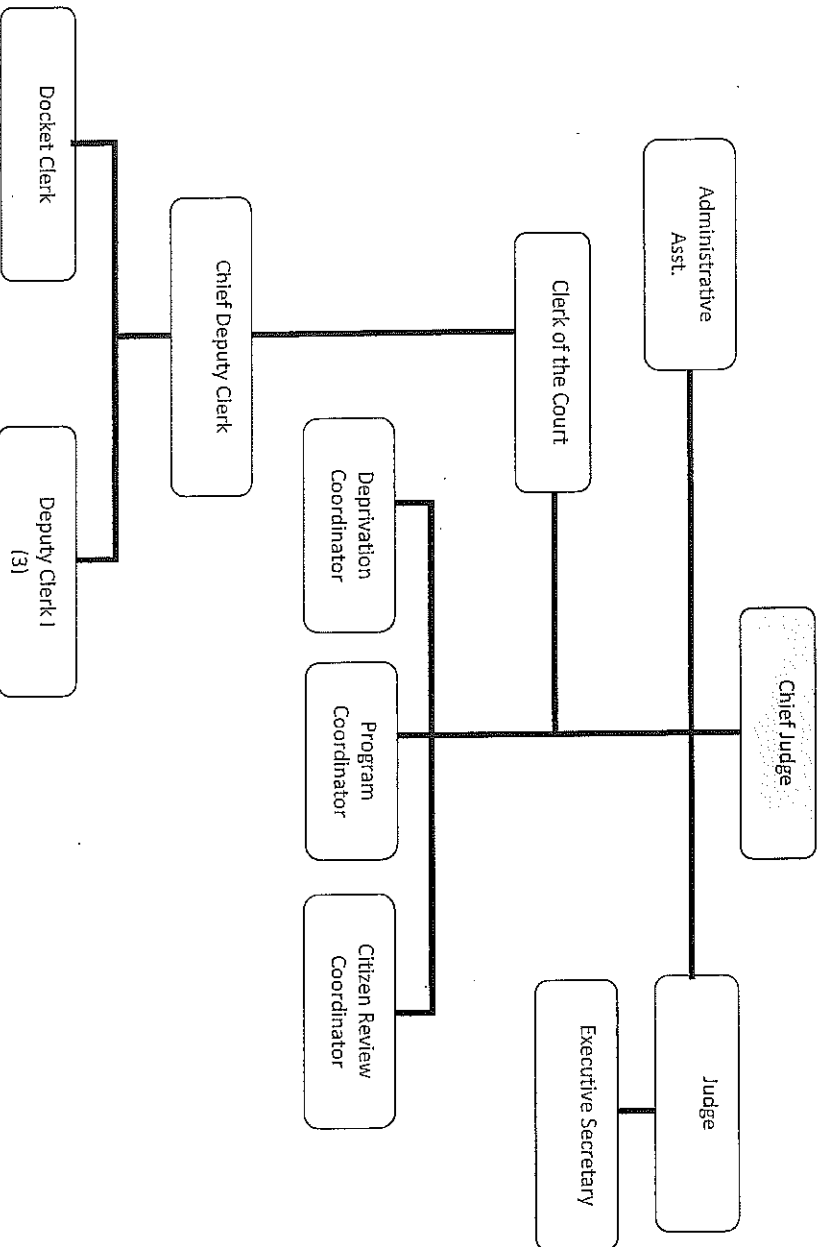
DISTRICT ATTORNEY

DRAFT FOR COMMITTEE REVIEW

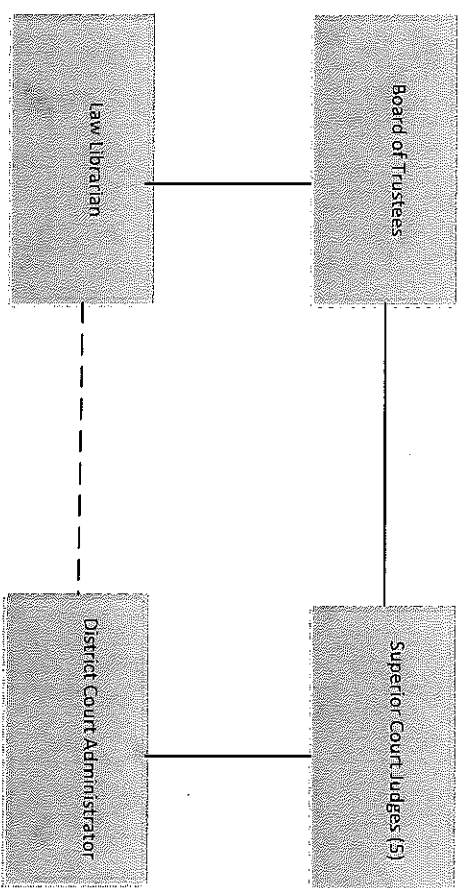


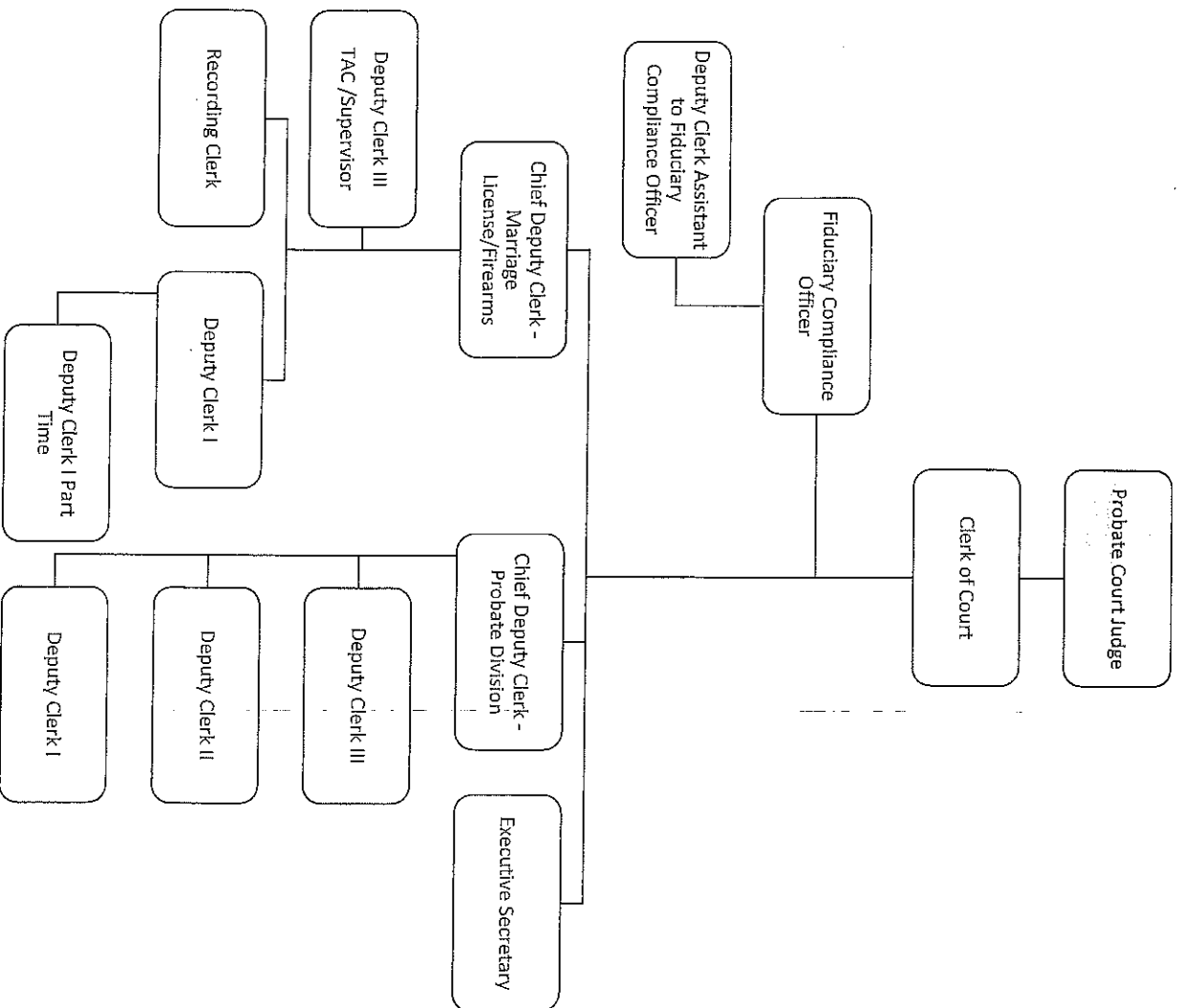
JUVENILE COURT

DRAFT FOR COMMITTEE REVIEW

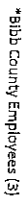


Law Library





DRAFT FOR COMMITTEE REVIEW



SEPTEMBER 25, 2013

Consolidated Bibb Sheriff's Office Organizational Chart

SHERIFF
DAVID DAVIS

CHIEF OF
STAFF

CHIEF DEPUTY

COLONEL
LAW ENFORCEMENT
SERVICES

COLONEL
CORRECTIONS/COURTS
SERVICES

FINANCE DIRECTOR

DIRECTOR of STRATE
MANAGEMENT

SUPPORT
OPERATIONS
DIRECTOR

SWAT

EOD

CRISIS
NEGOTIATORS

Accounting
& Audits

Inventory
Control

Grants

Budgets

Open
Records

Public
Affairs

TF

Vehicles

Quarter-Master

CRIME
ANALYSIS

CENTRAL
RECORDS

POLICY AND
CERTIFICATION

E911 CENTER
CAPTAIN

CIVIL
PROCESS

Background
Checks

OFFICE of
PROFESSIONAL
STANDARDS

Internal
Affairs

Backgr
Investig

DISTRICT 1
MAJOR

DISTRICT 2 MAJOR

DISTRICT 3 MAJOR

DISTRICT 4 MAJOR

SOS
MAJOR

CID MAJOR

JAIL MAJOR

COURT
SECURITY
MAJOR

District
Captain

District
Captain

Traffic
Captain

District
Captain

SOS
Captain

Persons
Captain

Property
Captain

Forensics
Captain

Jail
Captain

Warrants
Captain

Detention
Captain

Main Court
Captain

JV
C.

K9
Unit

NODs

YES

Crime
Prevention

Special
Projects

Chinestoppers

- Violent Crimes
- CAC
- SIU
- Gang Unit
- Victim/Witness Assistance
- Sex Offender Registry

- District Investigations
- Special Units

Evidence &
Property

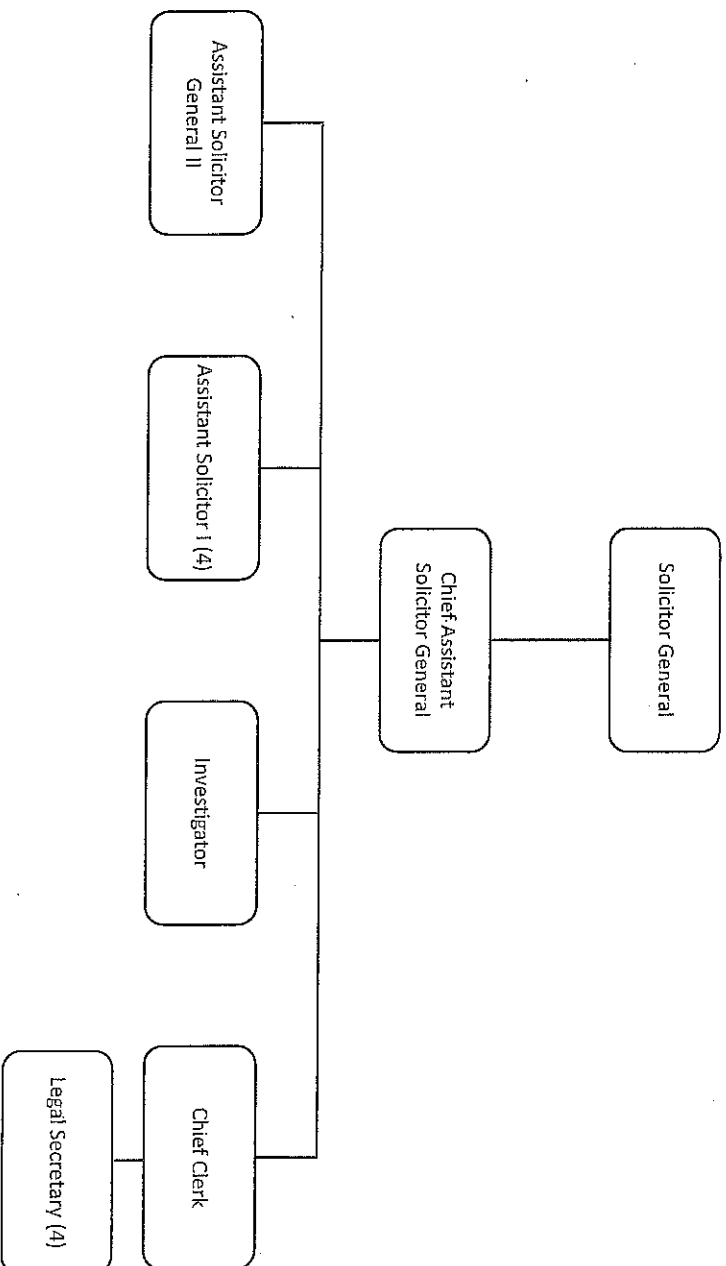
Crime
Scene/Crime Lab

SRT

Page 35

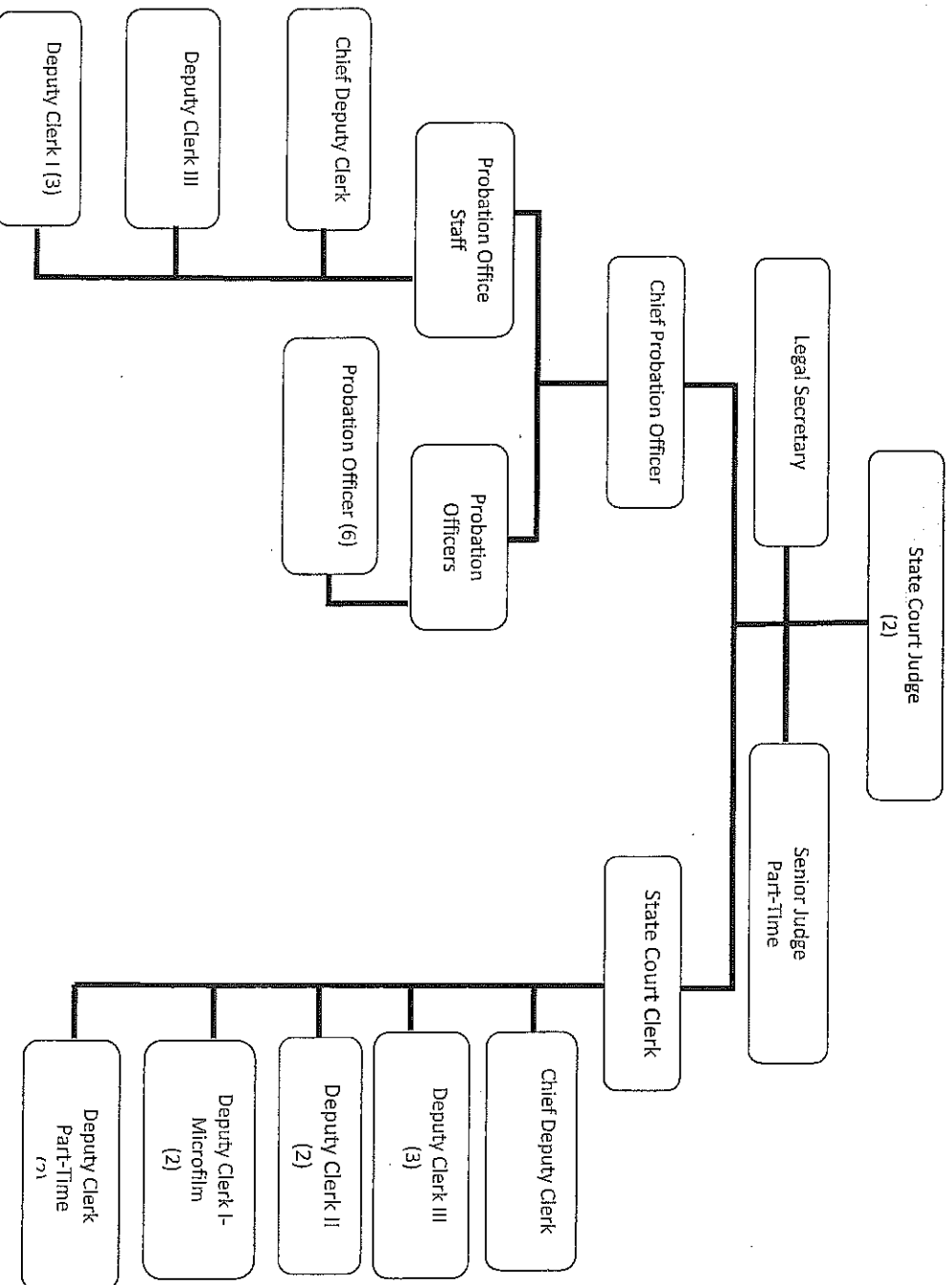
SOLICITOR-GENERAL

DRAFT FOR COMMITTEE REVIEW

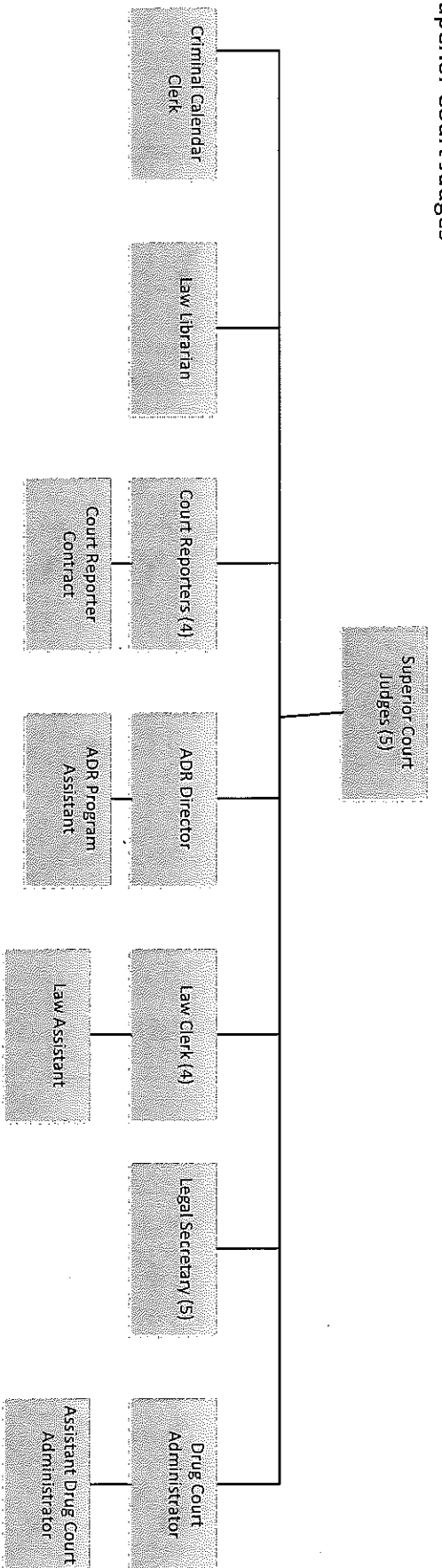


STATE COURT JUDGE

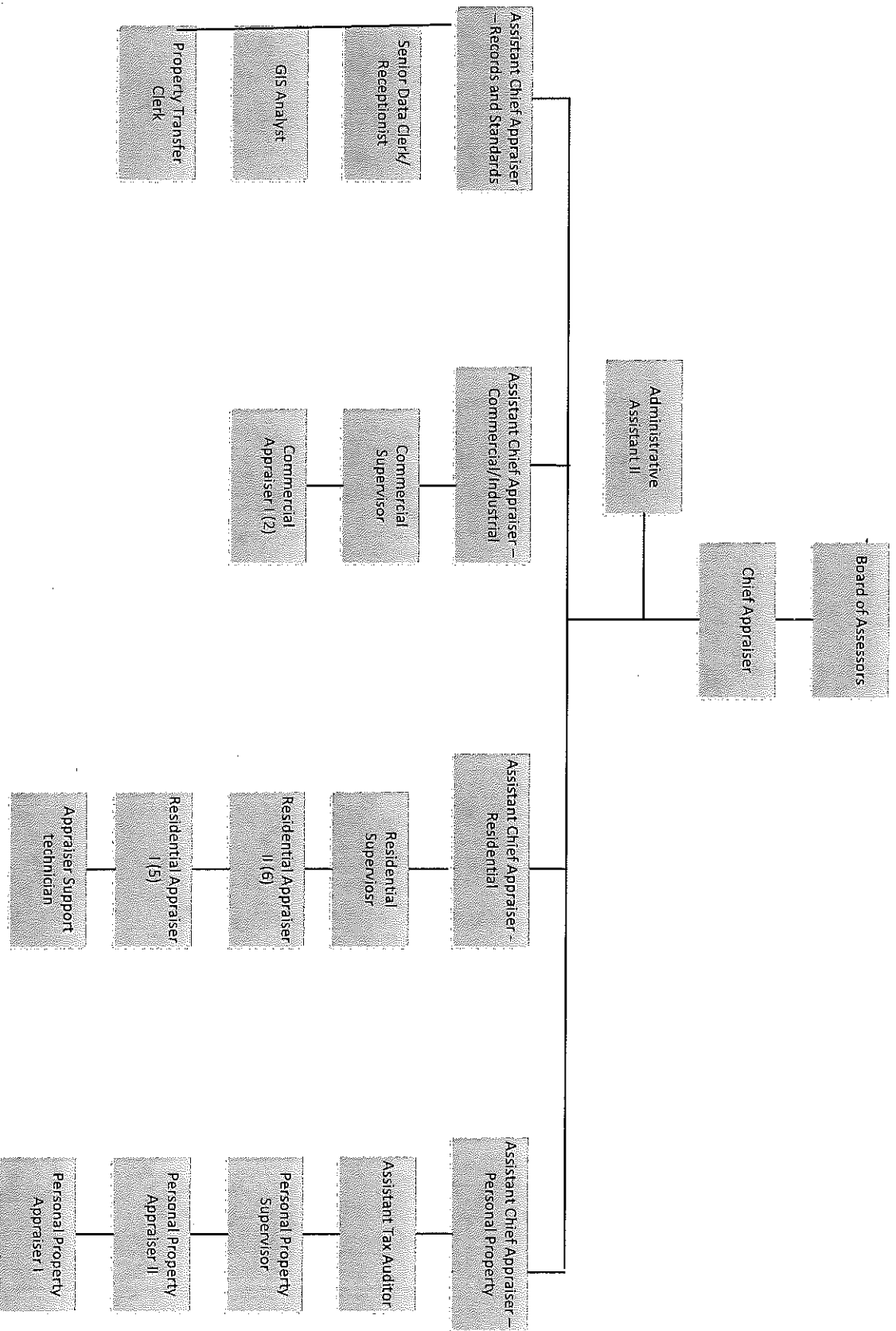
DRAFT FOR COMMITTEE REVIEW



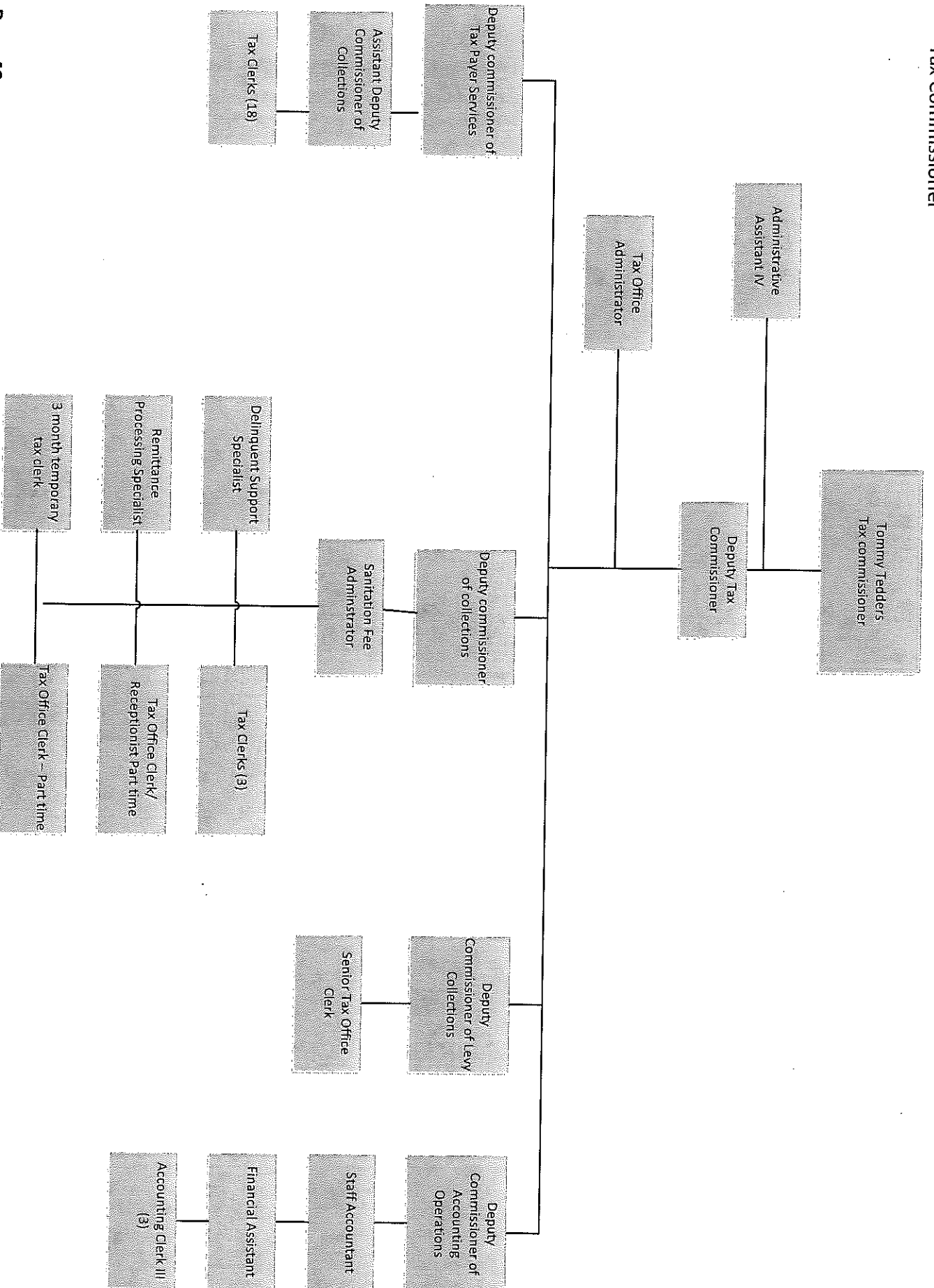
Superior Court Judges



Tax Assessor



Tax Commissioner



Cooperative Extension

